

# U.S. PUBLIC LAND SURVEY MONUMENT RECORD

NOTE: THIS FORM IS INTENDED AND DESIGNED TO FULFILL ALL REQUIREMENTS OF WISCONSIN ADMINISTRATIVE CODE, CHAPTER LAND SURVEY MONUMENT RECORD (3) (a) (b) (c) (d) (e) (f) (g) (h) (i). AN ADDITIONAL SHEET MAY BE ADDED IF NECESSARY TO CONFORM WITH SAID REQUIREMENTS. A-E 7.08 U.S. PUBLIC

(a) CORNER LOCATION: TOWNSHIP 32 NORTH  
 RANGE 4 EAST/~~WEST~~  
 TOWN/~~CITY/VILLAGE~~ CORNING  
 COUNTY LINCOLN



SECTION **X** 34

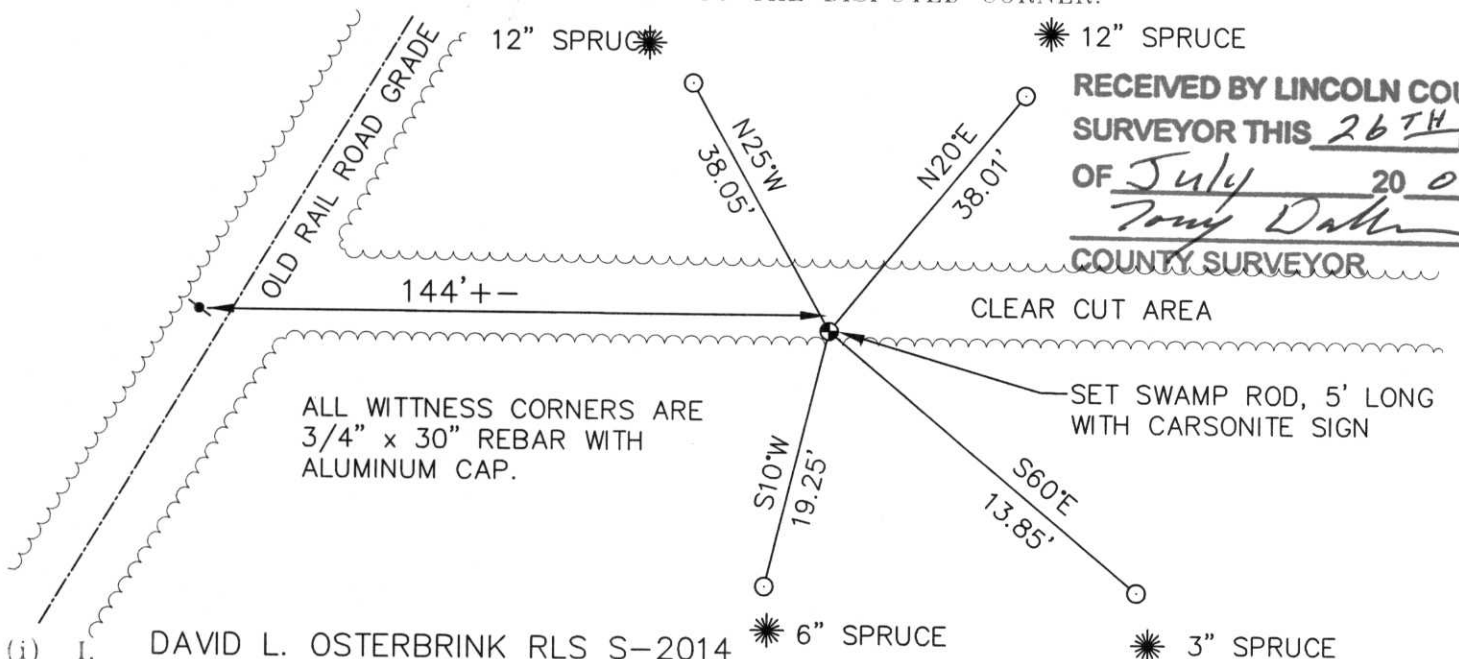


(b) (f) (g) (h) DESCRIPTION OF MONUMENT FOUND AT THIS CORNER AND IF IT WAS ACCEPTED, STATE ALL EVIDENCE (MATERIAL, TESTIMONIAL, OCCUPATIONAL, PLATS, RECORDS, OTHER MONUMENTS) USED AS BASIS FOR ACCEPTING. IF NOT ACCEPTED OR IF NOTHING WAS FOUND, STATE EVIDENCE USED AS BASIS FOR ESTABLISHING LOCATION. IF REESTABLISHED THROUGH LOST CORNER PROPORTIONATE METHODS, INDICATE ALL MONUMENTS, DISTANCES AND DIRECTIONS USED TO ESTABLISH. INDICATE TYPE OF MONUMENT FOUND OR SET AND SIGN POST.

WENT DOWN OLD RAIL ROAD GRADE, CAME TO A DEAD TREE WITH ALUMINUM "WISCONSIN CONSERVATION DEPARTMENT" LOCATION POSTER ON A DEAD TREE. SOMEONE HAD WRITTEN IN PENCIL, "G. SCHR (?) 10-24-88" TREE HAD OLD BLUE RIBBON ON IT. TO THE EAST, TREES HAD BEEN CLEAR CUT, DUE EAST. WALKED OUT INTO SWAMP ON CLEAR CUT LINE, SAW OLD BLUE RIBBON ON TREES AND ON THE GROUND. CAME TO AN OLD DEAD TREE, THAT APPEARED TO BE SQUARED OFF. THERE WAS BLUE RIBBON TIED ALL OVER IT. CLEAR CUT LINE CONTINUED TO THE EAST. TALKED ON PHONE TO DALE CHRISTOPHERSON, LOCAL LAND OWNER. HE DID NOT KNOW WHERE THIS CORNER WAS.

WALKED AROUND SWAMP, FOUND NO OTHER EVIDENCE FOR THIS CORNER. SET SWAMP ROD AT BASE OF DEAD TREE, HELD FOR CORNER. WHEN I SET CENTER OF SECTION, I FOUND AN 8" RUSTY SPIKE WITH ORANGE RIBBON 0.2' FROM CORNER.

(c) (d) (e) PLAN VIEW OF CORNER WITH TIES TO AT LEAST 4 WITNESS MONUMENTS. IF IN DISAGREEMENT WITH PREVIOUSLY ESTABLISHED CORNER, SHOW THE DISTANCES BETWEEN THE TWO CORNERS AND ALSO INDICATE THE TIES TO THE DISPUTED CORNER.



**RECEIVED BY LINCOLN COUNTY SURVEYOR THIS 26<sup>TH</sup> DAY OF July 20 04**  
*Tony Datta*  
 COUNTY SURVEYOR

(i) I, DAVID L. OSTERBRINK RLS S-2014  
 (TYPE OR PRINT NAME) CERTIFY THAT THE CORNER LOCATION ON THIS RECORD WAS DETERMINED BY ME OR UNDER MY DIRECTION AND CONTROL AND THAT THIS U.S. PUBLIC LAND SURVEY MONUMENT RECORD IS CORRECT AND COMPLETE TO THE BEST OF MY KNOWLEDGE AND BELIEF.

*David L. Osterbrink*  
 SIGNATURE

7-25-04  
 DATE



INDEX NO. 1-15