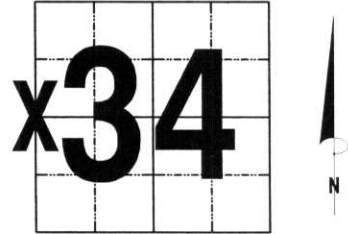


# U.S. PUBLIC LAND SURVEY MONUMENT RECORD

NOTE: THIS FORM IS INTENDED AND DESIGNED TO FULFILL ALL REQUIREMENTS OF WISCONSIN ADMINISTRATIVE CODE, CHAPTER LAND SURVEY MONUMENT RECORD (3) (a) (b) (c) (d) (e) (f) (g) (h) (i). AN ADDITIONAL SHEET MAY BE ADDED IF NECESSARY TO CONFORM WITH SAID REQUIREMENTS. A-E 7.08 U.S. PUBLIC

(a) CORNER LOCATION: TOWNSHIP 32 NORTH  
 RANGE 4 EAST/~~WEST~~  
 TOWN/~~CITY/VILLAGE~~ CORNING  
 COUNTY LINCOLN

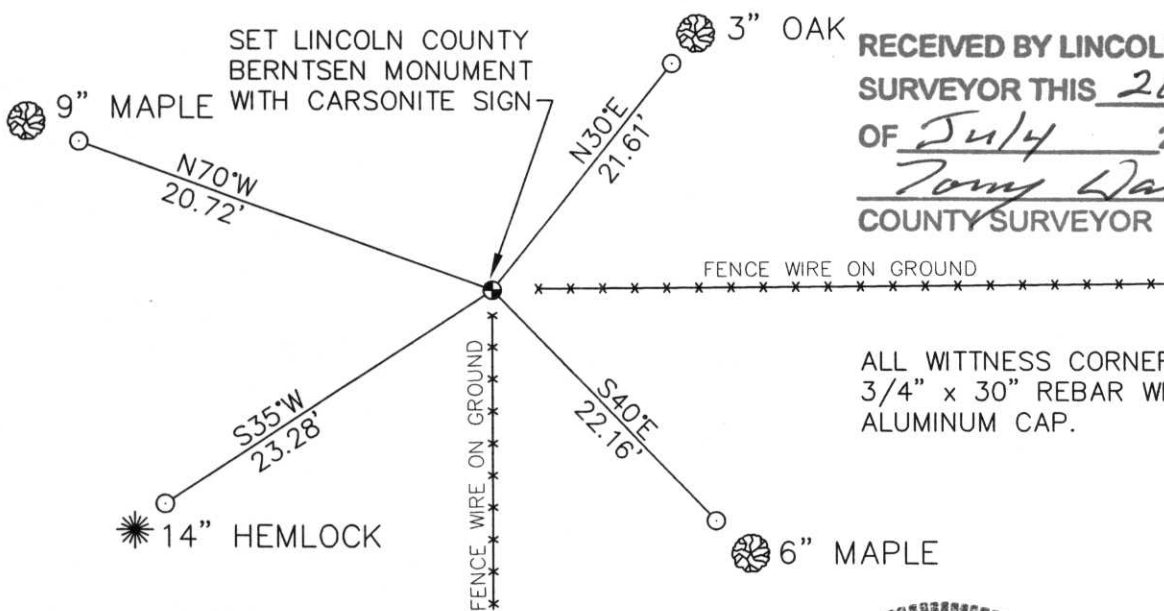


SECTION 34

(b) (f) (g) (h) DESCRIPTION OF MONUMENT FOUND AT THIS CORNER AND IF IT WAS ACCEPTED, STATE ALL EVIDENCE (MATERIAL, TESTIMONIAL, OCCUPATIONAL, PLATS, RECORDS, OTHER MONUMENTS) USED AS BASIS FOR ACCEPTING. IF NOT ACCEPTED OR IF NOTHING WAS FOUND, STATE EVIDENCE USED AS BASIS FOR ESTABLISHING LOCATION. IF REESTABLISHED THROUGH LOST CORNER PROPORTIONATE METHODS, INDICATE ALL MONUMENTS, DISTANCES AND DIRECTIONS USED TO ESTABLISH. INDICATE TYPE OF MONUMENT FOUND OR SET AND SIGN POST.

TALKED TO BROTHER OF DALE RAUEN, WHO SAID THERE WAS A MARKER AT THIS CORNER. WENT INTO WOODS, FOUND AN 1-1/4" x 48" IRON PIPE. THERE WAS OLD FENCE WIRE GOING TO THE EAST AND SOUTH. I DID FIND SOME WIRE GOING WEST, BUT IT WAS NOT IN LINE WITH THE CORNER. THERE WAS A BLUE PAINT LINE GOING TO THE WEST AND LOGGING HAD BEEN DONE RECENTLY TO THE NW OF THIS CORNER. PULLED IRON PIPE, SET LINCOLN COUNTY BERNTSEN MONUMENT IN ITS PLACE. TIED OUT.

(c) (d) (e) PLAN VIEW OF CORNER WITH TIES TO AT LEAST 4 WITNESS MONUMENTS. IF IN DISAGREEMENT WITH PREVIOUSLY ESTABLISHED CORNER, SHOW THE DISTANCES BETWEEN THE TWO CORNERS AND ALSO INDICATE THE TIES TO THE DISPUTED CORNER.



RECEIVED BY LINCOLN COUNTY SURVEYOR THIS 26<sup>TH</sup> DAY OF JULY 2004  
*Tommy Dallen*  
 COUNTY SURVEYOR

ALL WITNESS CORNERS ARE 3/4" x 30" REBAR WITH ALUMINUM CAP.

(i) I, DAVID L. OSTERBRINK RLS S-2014  
 (TYPE OR PRINT NAME) CERTIFY THAT THE CORNER LOCATION ON THIS RECORD WAS DETERMINED BY ME OR UNDER MY DIRECTION AND CONTROL AND THAT THIS U.S. PUBLIC LAND SURVEY MONUMENT RECORD IS CORRECT AND COMPLETE TO THE BEST OF MY KNOWLEDGE AND BELIEF.

*David L. Osterbrink*  
 SIGNATURE

7-25-04  
 DATE



INDEX NO. W-13