

# U.S. PUBLIC LAND SURVEY MONUMENT RECORD

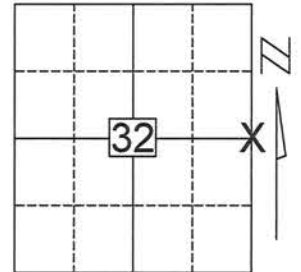
Note: This form is intended and designed to fulfill all requirements of Wisconsin Administrative Code, Chapter A-E 5.02, U.S. Public Land Survey Monument Record (3)(a)(b)(c)(d)(e)(f)(g)(h)(i). An additional sheet may be added if necessary to conform with said requirements.

(a) Corner location: Township 32 North

Range 4 East

Town/City/Village CORNING

County LINCOLN

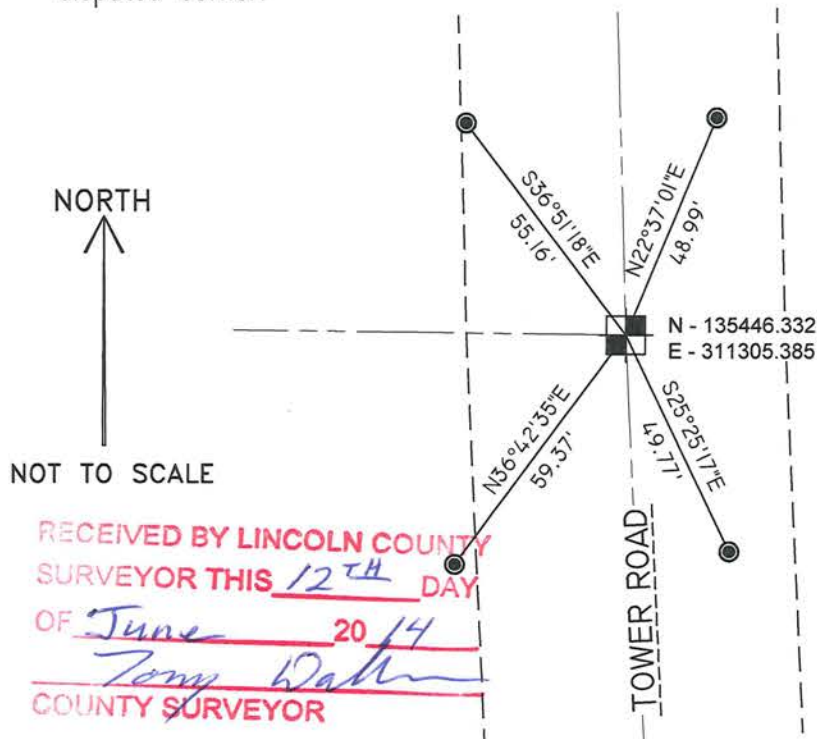


Section 32

(b)(f)(g)(h) Description of monument found at this corner and if it was accepted, state all evidence (material, testimonial, occupational, plats, records, other monuments) used as a basis for accepting. If not accepted or if nothing was found, state evidence used as basis for establishing location. If reestablished through lost corner proportionate methods, indicate all monuments, distances and directions used to establish.

SEARCHED FOR AND FOUND EXISTING CORNER MONUMENT AND TIES FROM TIESHEET DATED 6/25/2007. THE MONUMENT FOUND AT THE CORNER DID NOT MATCH THE DISTANCES TO THE EXISTING TIES. ACCEPTED THE MONUMENT AS THE CORNER POSITION BASED UPON 2007 RECOVERY NOTES AND PHOTOS. RE-TIED TO THE EXISTING TIES SET IN 2007.

(c)(d)(e) Plan view of corner with ties to at least 4 witness monuments. If in disagreement with previously established corner, show the distances between the two corners and also indicate the ties to the disputed corner.



BEARINGS AND COORDINATES ARE BASED ON THE LINCOLN COUNTY COORDINATE SYSTEM NAD 83(2011) DATUM.

- - FOUND REBAR W/ ALUM CAP
- - FOUND BERNTSEN MONUMENT



RECEIVED BY LINCOLN COUNTY SURVEYOR THIS 12<sup>TH</sup> DAY OF June 20 14  
Tommy Dalko  
 COUNTY SURVEYOR

(i) I, Joshua W. Prentice, RLS S-2852, certify that the corner location on this record was determined by me or under my direction and control and that this U.S. Public Land Survey Monument Record is correct and complete to the best of my knowledge and belief.

Signature [Signature] Date 6-5-2014

Index No. 323245

W-9

# LINCOLN COUNTY U.S. PUBLIC LAND TIE SHEET RECORD

SECTION 33  
TOWNSHIP 32N  
RANGE 4 E

333244  
NO.

LANDMARK

CORNING  
CITY, VILLAGE, TOWN

CORNER INDENTITY: BERNSTEN MONUMENT

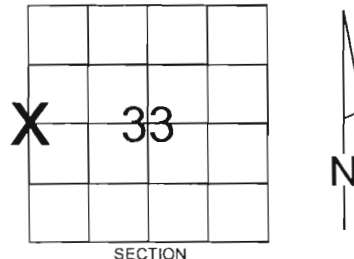
LINCOLN COUNTY COORDINATE: N: 135444.8290

E: 311305.1550

DATE OF SURVEY: June 25, 2007

SURVEY PARTY: Eron/Dahlvig

FOUND   
SET   
RE-SET   
RE-TIED

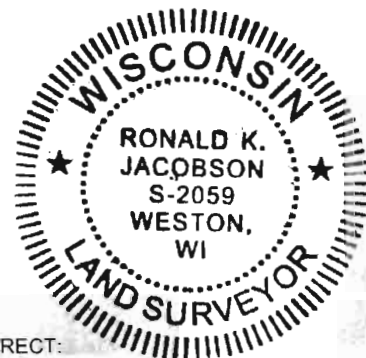


Description of monument found at this corner and if was accepted, state all evidence (material, testimonial, occupational, plats, records, other monuments) used as a basis for accepting. If not accepted or if nothing was found, state evidence used as basis for establishing location. If reestablished through lost corner proportionate methods, indicate all monuments, distances and directions used to establish.

## BASIS FOR MONUMENT LOCATION:

(DESCRIBE METHOD OF SURVEY AND CORNER AUTHENTICATION)

Excavated and found a tip of a wood post. The tip of the wood post fell 33 feet west of an iron pipe and wood post remains for the right of way of Tower Road. Set a Lincoln County Bernsten Monument at the location of the tip of the wood post location.



CERTIFIED CORRECT:

*[Signature]*

Ronald Jacobson RLS 2059-008

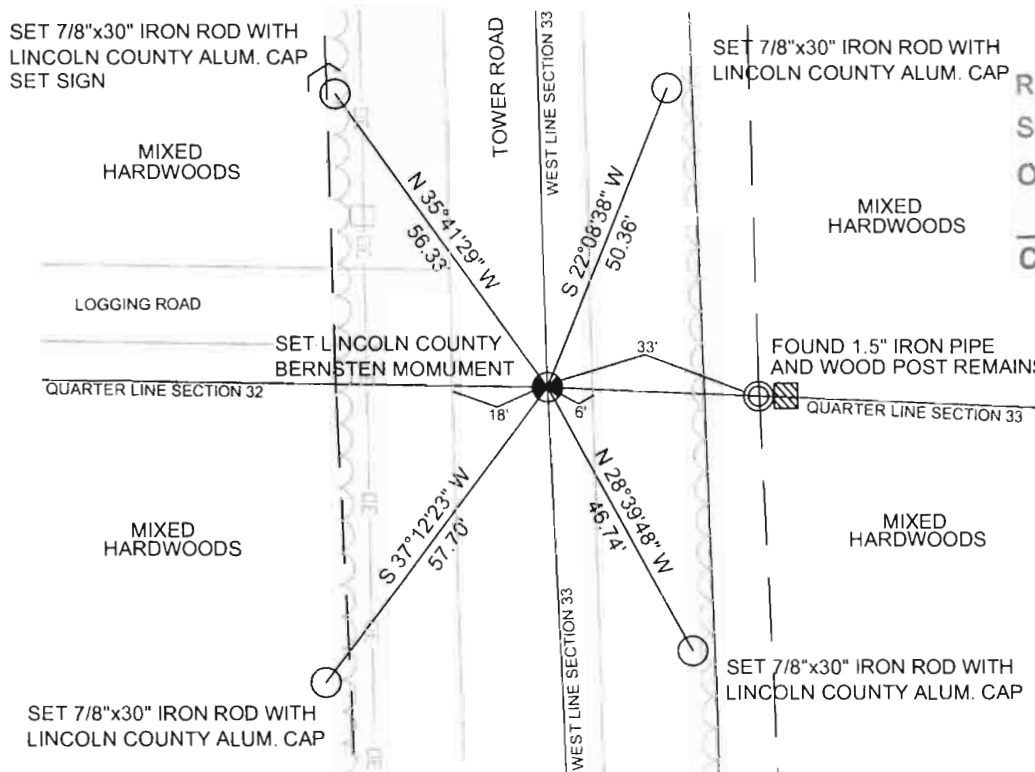
Registered Land Surveyor

DATE: June 29, 2007

COMPANY: Central Wisconsin Engineers & Architects  
5707 Schofield Ave.  
Weston, Wisconsin 54476  
(715) 359-9400

## TIE SKETCH:

SHOW MINIMUM OF FOUR (4) HORIZONTAL TIE DISTANCES TO FIXED WITNESS MONUMENTS.  
DESCRIBE ALL MONUMENTS FOUND OR SET. ALL DISTANCES SHOWN IN US SURVEY FEET



RECEIVED BY LINCOLN COUNTY  
SURVEYOR THIS 29<sup>TH</sup> DAY  
OF June 20 07  
*[Signature]*  
COUNTY SURVEYOR

COORDINATES ARE REFERENCED TO LINCOLN COUNTY COORDINATE SYSTEM AS DEVELOPED BY THE WI. DEPARTMENT OF TRANSPORTATION AND ARE BASED ON GPS OBSERVATIONS TO CONTROL POINTS AS SUPPLIED BY LINCOLN COUNTY.

NOT TO SCALE  
BEARINGS REFERENCED TO LINCOLN COUNTY COORDINATE SYSTEM

*6-M*









