

LINCOLN COUNTY U.S. PUBLIC LAND TIE SHEET RECORD

SECTION 31
TOWNSHIP 32N
RANGE 4 E

313245
NO.

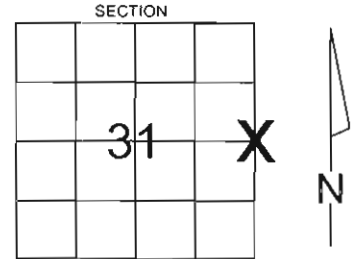
LANDMARK

CORNING
CITY, VILLAGE, TOWN

CORNER INDENTITY: 1.0" IRON PIPE

LINCOLN COUNTY COORDINATE: N: 135515.252
E: 305995.044

FOUND
SET
RE-SET
RE-TIED



Description of monument found at this corner and if was accepted, state all evidence (material, testimonial, occupational, plats, records, other monuments) used as a basis for accepting. If not accepted or if nothing was found, state evidence used as basis for establishing location. If reestablished through lost corner proportionate methods, indicate all monuments, distances and directions used to establish.

BASIS FOR MONUMENT LOCATION:

(DESCRIBE METHOD OF SURVEY AND CORNER AUTHENTICATION)

Found 1.0" iron pipe at corner. Blaze trees, blue line, property evidence, and comparison to original notes supports the iron pipe as the corner.



RECEIVED BY LINCOLN COUNTY
SURVEYOR THIS 25TH DAY
OF September 20 07
[Signature]
COUNTY SURVEYOR

CERTIFIED CORRECT:

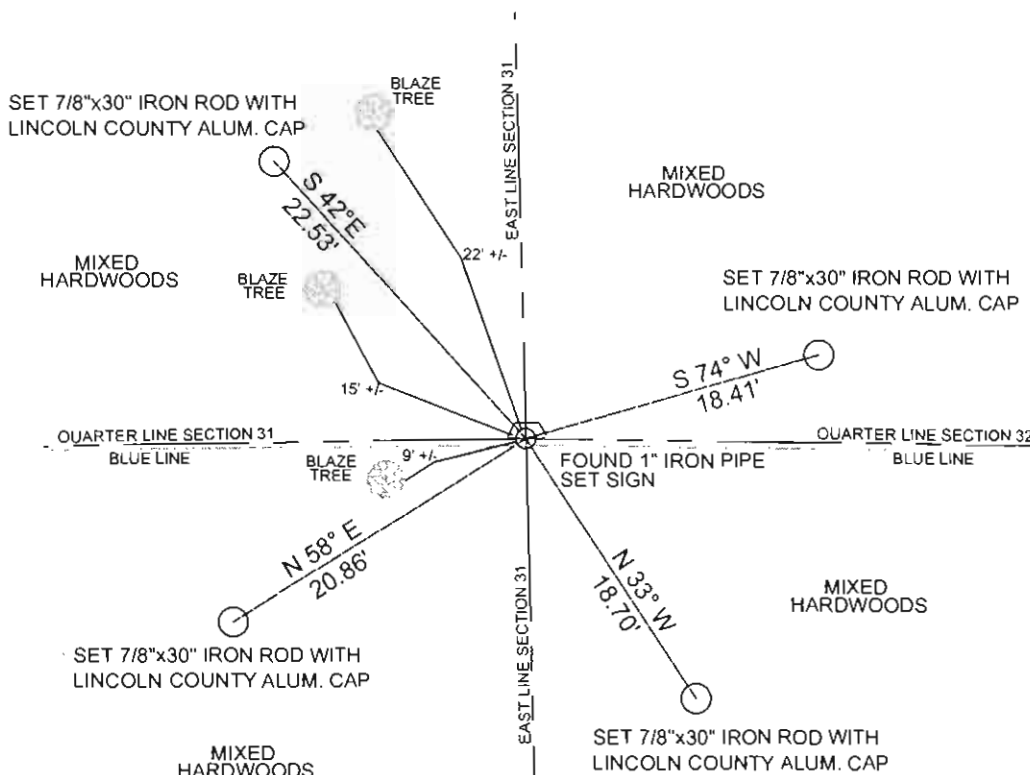
[Signature]
Ronald Jacobson RLS 2059-008
Registered Land Surveyor

COMPANY: Central Wisconsin Engineers & Architects
5707 Schofield Ave.
Weston, Wisconsin 54476
(715) 359-9400

DATE: September 20, 2007

TIE SKETCH:

SHOW MINIMUM OF FOUR (4) HORIZONTAL TIE DISTANCES TO FIXED WITNESS MONUMENTS.
DESCRIBE ALL MONUMENTS FOUND OR SET. ALL DISTANCES SHOWN IN US SURVEY FEET.



COORDINATES ARE REFERENCED TO LINCOLN COUNTY COORDINATE SYSTEM AS DEVELOPED BY THE WI. DEPARTMENT OF TRANSPORTATION AND ARE BASED ON GPS OBSERVATIONS TO CONTROL POINTS AS SUPPLIED BY LINCOLN COUNTY.

NOT TO SCALE
BEARINGS REFERENCED TO MAGNETIC NORTH















