

# LINCOLN COUNTY U.S. PUBLIC LAND TIE SHEET RECORD

SECTION 6  
TOWNSHIP 31N  
RANGE 4 E

63143  
NO.

LANDMARK

CORNING  
CITY, VILLAGE, TOWN

CORNER INDENTITY: 1" IRON PIPE

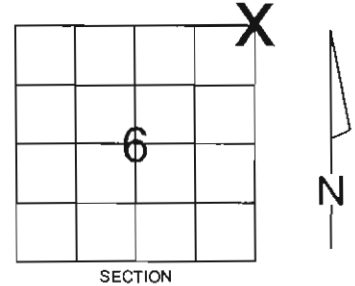
LINCOLN COUNTY COORDINATE: N: 132876.2400

E: 306047.7880

DATE OF SURVEY: November 1, 2006

SURVEY PARTY: Rutzen

FOUND   
SET   
RE-SET   
RE-TIED

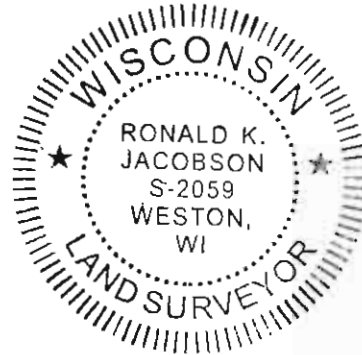


Description of monument found at this corner and if was accepted, state all evidence (material, testimonial, occupational, plats, records, other monuments) used as a basis for accepting. If not accepted or if nothing was found, state evidence used as basis for establishing location. If reestablished through lost corner proportionate methods, indicate all monuments, distances and directions used to establish.

## BASIS FOR MONUMENT LOCATION:

(DESCRIBE METHOD OF SURVEY AND CORNER AUTHENTICATION)

Found 1" iron pipe with an older pipe lying next to it and a newer pipe also next to it. Held the 1" iron pipe as best evidence of the corner.



CERTIFIED CORRECT:

*Ronald K. Jacobson*

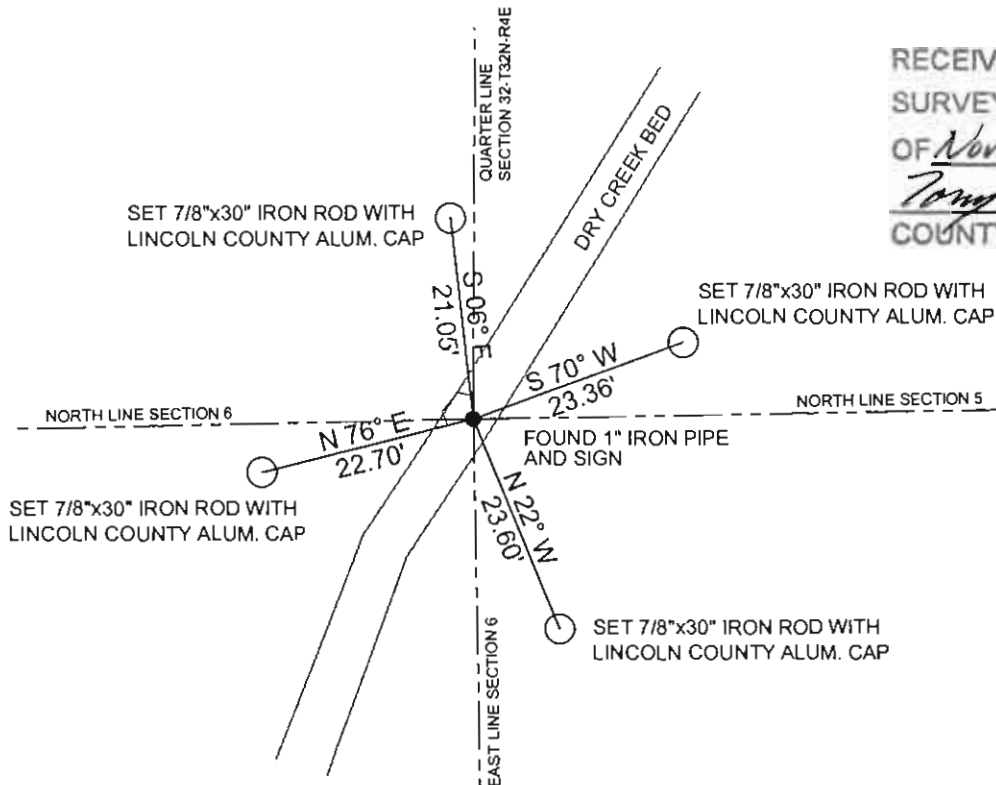
Ronald Jacobson RLS 2059-008  
Registered Land Surveyor

DATE: November 3, 2006

COMPANY: Central Wisconsin Engineers & Architects  
5707 Schofield Ave.  
Weston, Wisconsin 54476  
(715) 359-9400

## TIE SKETCH:

SHOW MINIMUM OF FOUR (4) HORIZONTAL TIE DISTANCES TO FIXED WITNESS MONUMENTS. DESCRIBE ALL MONUMENTS FOUND OR SET. ALL DISTANCES SHOWN IN US SURVEY FEET.



RECEIVED BY LINCOLN COUNTY SURVEYOR THIS 8<sup>TH</sup> DAY OF November, 20 06  
*Tony Dull*  
COUNTY SURVEYOR

COORDINATES ARE REFERENCED TO LINCOLN COUNTY COORDINATE SYSTEM AS DEVELOPED BY THE WI. DEPARTMENT OF TRANSPORTATION AND ARE BASED ON GPS OBSERVATIONS TO CONTROL POINTS AS SUPPLIED BY LINCOLN COUNTY.

NOT TO SCALE  
BEARINGS REFERENCED TO MAGNETIC NORTH

A-5









