

U.S. PUBLIC LAND SURVEY MONUMENT RECORD

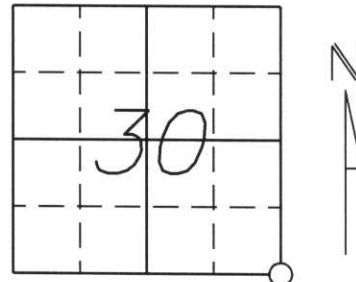
Note: This form is intended and designed to fulfill all requirements of Wisconsin Administrative Code, Chapter A-E 5.02, U.S. Public Land Survey Monument Record (3) (a) (b) (c) (d) (e) (f) (g) (h) (l). An additional sheet may be added if necessary to conform with said requirements.

(a) Corner location: Township 32 North

Range 4 East

Town/City/Village Corning

County Lincoln



Section 30

(b) (f) (g) (h) Description of monument found at this corner and if it was accepted, state all evidence (material, testimonial, occupational, plats, records, other monuments) used as a basis for accepting. If not accepted or if nothing was found, state evidence used as a basis for establishing location. If reestablished through lost corner proportionate methods, indicate all monuments, distances and directions used to establish.

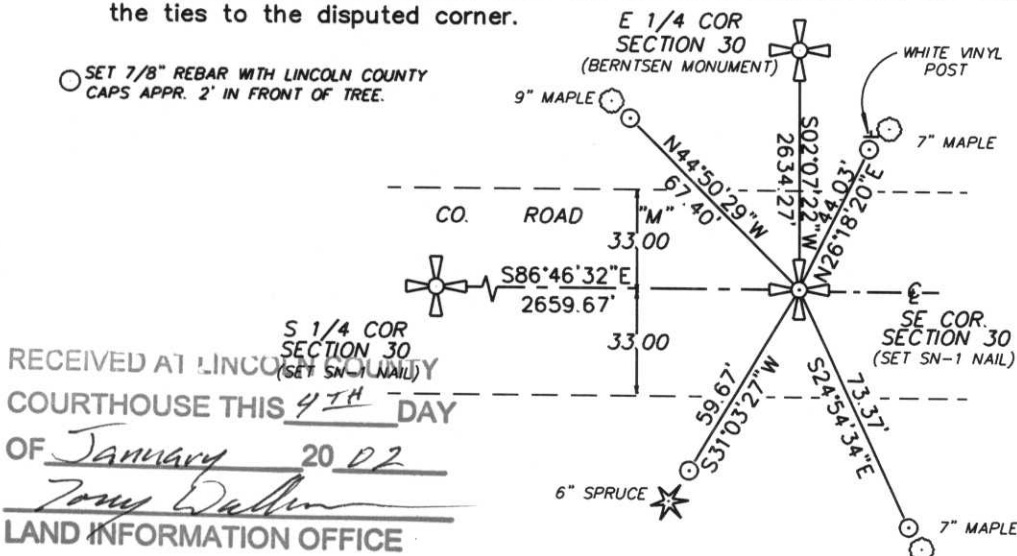
Original survey done by William Daugherty in Jan., 1862. Set corner post with bearing trees:
 14" Maple N44°E, 21 lks.
 12" Birch S24°W, 34 lks.

Visited in March, 1975 by William Stuth. Stuth shows an iron pipe. Doesn't state size or whether found or set.

Visited in March, 1998 by David Lemke. He found 2 brass cap witness monuments set in concrete with distances marked to the corner. Highway was excavated but no evidence of corner was found.

Found both caps set in concrete. Distances marked on concrete on both monuments. Set SN-1 nail at intersection of both those distances. Set (4) 7/8" rebars with Lincoln County caps as witness monuments approx. 2 feet from bearing trees.

(c) (d) (e) Plan view of corner with ties to at least 4 witness monuments. If in disagreement with previously established corner, show the distances between the two corners and also indicate the ties to the disputed corner.



RECEIVED AT LINCOLN COUNTY COURTHOUSE THIS 4TH DAY OF January 20 02
Tommy Dabbin
 LAND INFORMATION OFFICE

(l) I, William W. Nutter RLS, S-2299
 (type or print name) certify that the corner location on this record was determined by me or under my direction and control and that this U.S. Public Land Survey Monument Record is correct and complete to the best of my knowledge and belief.

William W. Nutter RLS S-2299 1-3-02
 Signature Date

Index No. 4-5

U.S. PUBLIC LAND SURVEY MONUMENT RECORD

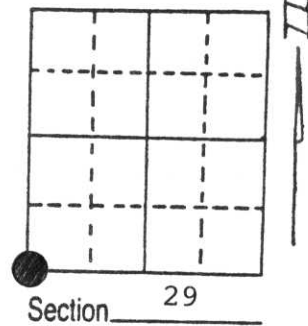
Note: This form is intended and designed to fulfill all requirements of Wisconsin Administrative Code, Chapter A-E 5.02, U.S. Public Land Survey Monument Record (3) (a) (b) (c) (d) (e) (f) (g) (h) (i). An additional sheet may be added if necessary to conform with said requirements.

(a) Corner location: Township 32 North

Range 4 East

Town/City/Village TN. OF CORNING

County LINCOLN



(b) (f) (g) (h) Description of monument found at this corner and if it was accepted, state all evidence (material, testimonial, occupational, plats, records, other monuments) used as a basis for accepting. If not accepted or if nothing was found, state evidence used as basis for establishing location. If reestablished through lost corner proportionate methods, indicate all monuments, distances and directions used to establish.

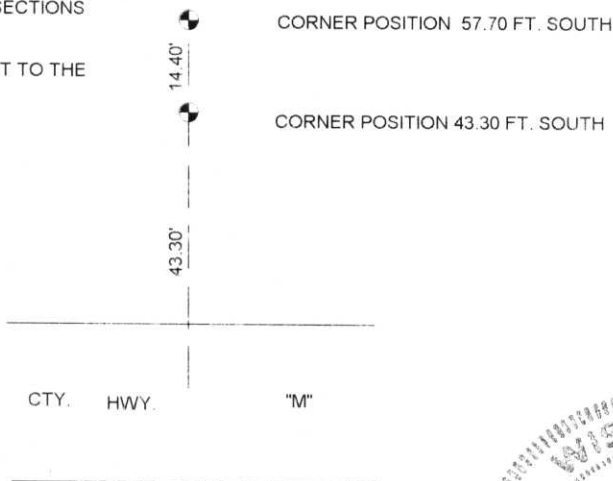
FOUND 2 BRASS CAP WITNESS MONUMENTS SET IN CONCRETE. HIGHWAY WAS EXCAVATED AT THE DISTANCE CALLED FOR FROM THE MONUMENTS NO EVIDENCE OF CORNER WAS FOUND

(c) (d) (e) Plan view of corner with ties to at least 4 witness monuments. If in disagreement with previously established corner, show the distances between the two corners and also indicate the ties to the disputed corner.

RECEIVED AT LINCOLN COUNTY
 COURTHOUSE THIS Feb DAY
 OF April 19 98
 TAX DESCRIPTION OFFICE
David Lemke

FOUND BRASS CAPS SET IN CONCRETE STAMPED SHOWING CORNER COMMON TO SECTIONS 29, 30, 31, 32

GREEN & WHITE WOOD POSTS SET TO THE NORTH OF EACH MONUMENT



(i) I, DAVID L. LEMKE S-1845
 (type or print name) certify that the corner location on this record was determined by me or under my direction and control and that this U.S. Public Land Survey Monument Record is correct and complete to the best of my knowledge and belief.



Signature

MAR. 30 1998

Date

Index No. U-5