

LINCOLN COUNTY U.S. PUBLIC LAND TIE SHEET RECORD

SECTION 28
TOWNSHIP 32N
RANGE 4 E

283244

LANDMARK

CORNING
CITY, VILLAGE, TOWN

NO.

CORNER IDENTIVITY: BERNSTEN MONUMENT

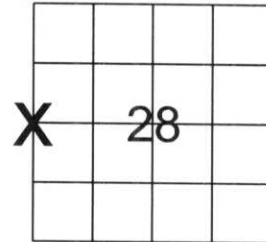
LINCOLN COUNTY COORDINATE: N: 140647.4780

E: 311178.1640

DATE OF SURVEY: June 11, 2007

SURVEY PARTY: Rutzen/Nieds

FOUND
SET
RE-SET
RE-TIED



SECTION

Description of monument found at this corner and if was accepted, state all evidence (material, testimonial, occupational, plats, records, other monuments) used as a basis for accepting. If not accepted or if nothing was found, state evidence used as basis for establishing location. If reestablished through lost corner proportionate methods, indicate all monuments, distances and directions used to establish.

BASIS FOR MONUMENT LOCATION:

(DESCRIBE METHOD OF SURVEY AND CORNER AUTHENTICATION)

Set Lincoln County Bernsten Monument at corner. Blue lines, property evidence, comparison to original notes and improvements for Tower Road was used to establish the location of the set Lincoln County Bernsten Monument.



CERTIFIED CORRECT:

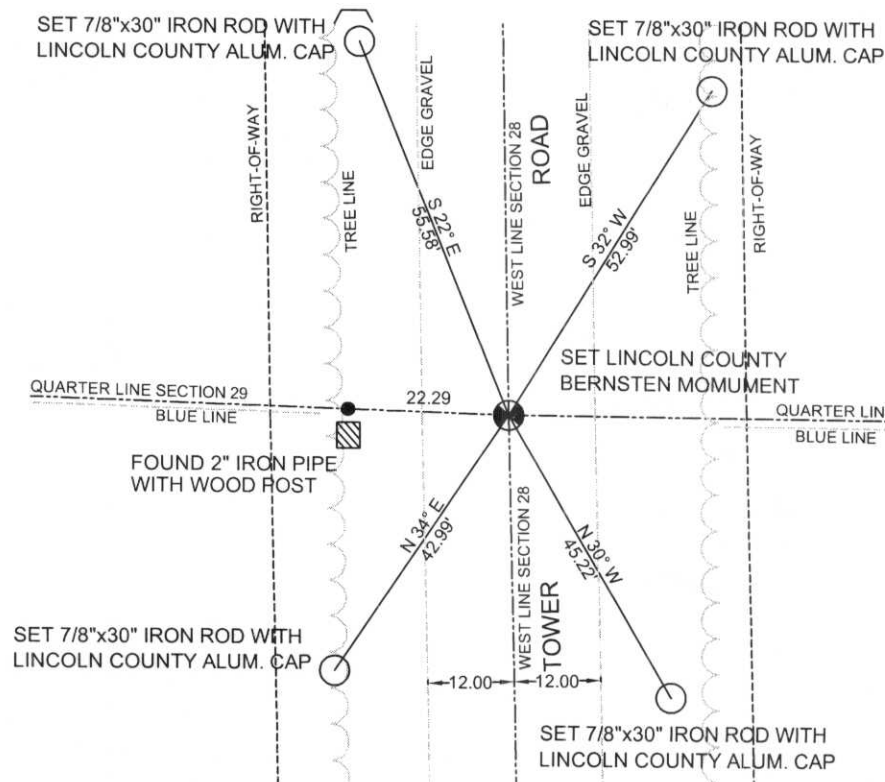
Ronald Jacobson
Ronald Jacobson RLS 2059-008
Registered Land Surveyor

DATE: June 15, 2007

COMPANY: Central Wisconsin Engineers & Architects
5707 Schofield Ave.
Weston, Wisconsin 54476
(715) 359-9400

TIE SKETCH:

SHOW MINIMUM OF FOUR (4) HORIZONTAL TIE DISTANCES TO FIXED WITNESS MONUMENTS.
DESCRIBE ALL MONUMENTS FOUND OR SET. ALL DISTANCES SHOWN IN US SURVEY FEET.



RECEIVED BY LINCOLN COUNTY
SURVEYOR THIS 22ND DAY
OF June 20, 07
Tony Dahl
COUNTY SURVEYOR

COORDINATES ARE REFERENCED TO LINCOLN COUNTY COORDINATE SYSTEM AS DEVELOPED BY THE WI. DEPARTMENT OF TRANSPORTATION AND ARE BASED ON GPS OBSERVATIONS TO CONTROL POINTS AS SUPPLIED BY LINCOLN COUNTY.



NOT TO SCALE
BEARINGS REFERENCED TO MAGNETIC NORTH

5-9







ZWE
CENTRAL
715-359-9400



