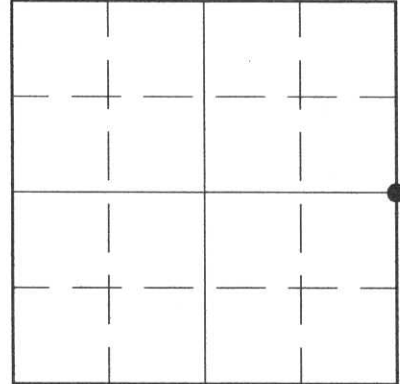


U.S. PUBLIC LAND SURVEY MONUMENT RECORD

HISTORY OF ORIGINAL CORNER ESTABLISHMENT AND SUBSEQUENT RESTORATION AND DESCRIPTION OF ANY RECORD, MONUMENT OCCUPATIONAL, TESTIMONIAL OR OTHER EVIDENCE CONSIDERED:

THIS CORNER WAS SET USING SINGLE PROPORTIONATE MEASUREMENT FROM THE NORTHEAST CORNER OF SECTION 26 TO THE WEST 1/4 CORNER OF SECTION 36.

● = LOCATION OF CORNER



SECTION 26

TOWNSHIP 32 NORTH, RANGE 4 EAST

TOWN OF CORNING(CENTRAL)

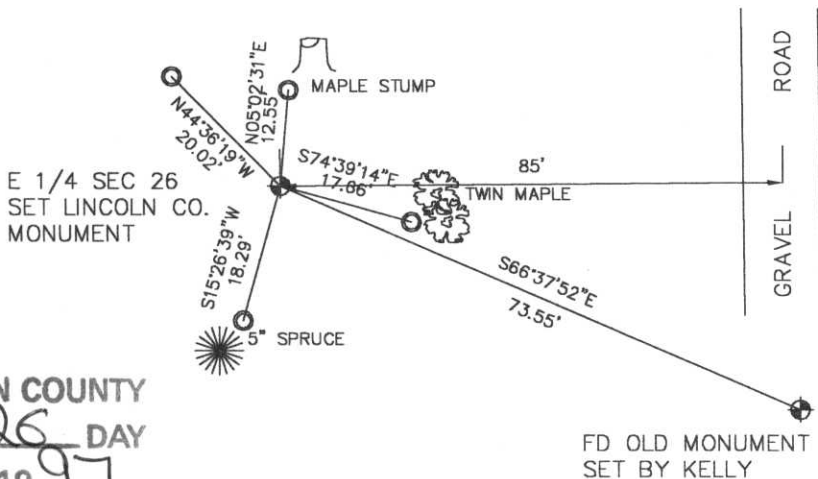
LINCOLN COUNTY, WISCONSIN

CORNER WAS: (CHECK ALL THAT APPLY)

- RESTORED THROUGH ACCEPTANCE OF AN OBLITERATED EVIDENCE LOCATION
- RESTORED THROUGH ACCEPTANCE OF A FOUND PERPETUATED LOCATION
- CONSIDERED A LOST CORNER AND REESTABLISHED THROUGH LOST CORNER PROPORTIONATE METHODS (INCLUDE A PLAN VIEW DRAWING SHOWING DISTANCES AND DIRECTIONS TO OTHER PUBLIC LAND SURVEY CORNERS USED FOR PROPORTIONING AND DETERMINING THE CORNER LOCATION)
- RESTORED OR REESTABLISHED IN A LOCATION THAT DIFFERS FROM A PREVIOUS RESTORATION OR REESTABLISHMENT (INCLUDE A PLAN VIEW DRAWING AND INDICATE WHAT WAS SET AND/OR FOUND)
- CHECK IF THERE IS ADDITIONAL INFORMATION ON BACK

DESCRIBE THE MONUMENT AND ACCESSORIES USED TO PERPETUATE THE LOCATION OF THE CORNER. (INCLUDE A PLAN VIEW DRAWING AND INDICATE WHAT WAS SET AND/OR FOUND) ALSO INCLUDE FOUR TIES TO THE SECTION CORNER AND DESCRIPTION OF THE TIES.

SET LINCOLN COUNTY
WITNESS CORNERS AT ALL TIES



RECEIVED AT LINCOLN COUNTY
COURTHOUSE THIS 26 DAY
OF NOV 19 97
Pat Rule
TAX DESCRIPTION OFFICE

FD OLD MONUMENT
SET BY KELLY

DANIEL E. HIGGINBOTHAM

(type or print name) CERTIFY THAT THE CORNER LOCATION SHOWN ON THIS RECORD WAS DETERMINED BY ME OR UNDER MY DIRECTION AND CONTROL AND THAT THIS U.S. PUBLIC LAND SURVEY MONUMENT RECORD IS CORRECT AND COMPLETE TO THE BEST OF MY KNOWLEDGE AND BELIEF.

Daniel Higginbotham
SIGNATURE

11/25/97
DATE



*Replaced
asterbriak Tie
Dated 10-10-97*

INDEX NO. 5-21

U.S. PUBLIC LAND SURVEY MONUMENT RECORD

NOTE: THIS FORM IS INTENDED AND DESIGNED TO FULFILL ALL REQUIREMENTS OF WISCONSIN ADMINISTRATIVE CODE, CHAPTER A-E 7.08 U.S. PUBLIC LAND SURVEY MONUMENT RECORD (3) (a) (b) (c) (d) (e) (f) (g) (h) (i). AN ADDITIONAL SHEET MAY BE ADDED IF NECESSARY TO CONFORM WITH SAID REQUIREMENTS.

(a) CORNER LOCATION: TOWNSHIP 32 NORTH
 RANGE 4 EAST/~~WEST~~
 TOWN/~~RIDGE~~ CORNING
 COUNTY LINCOLN



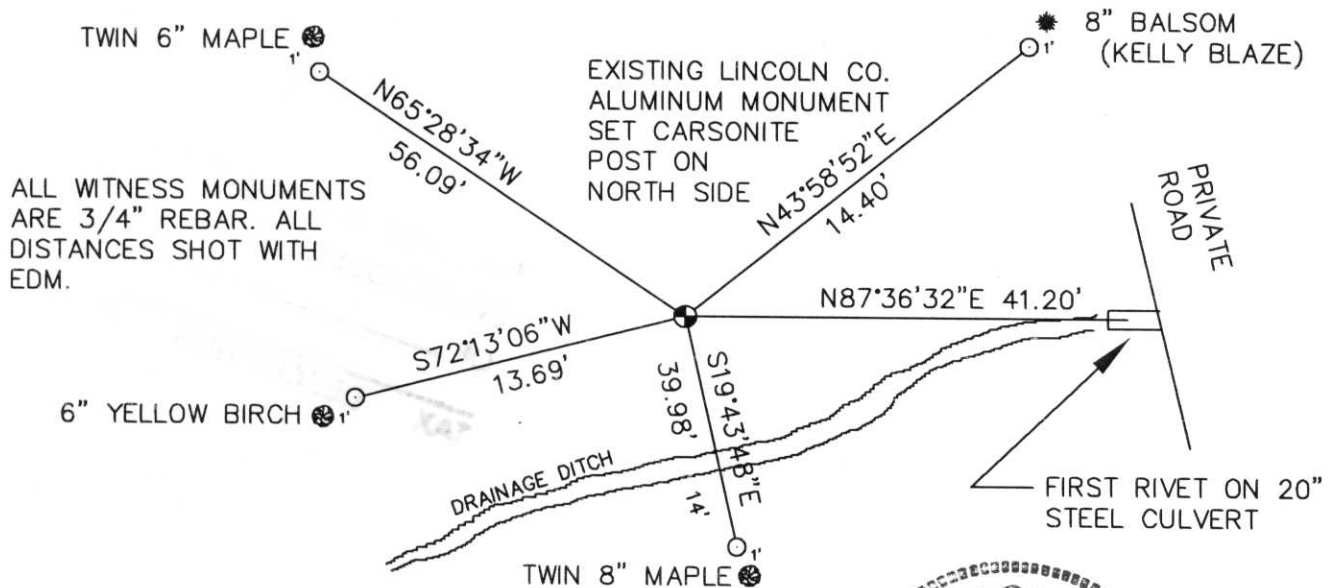
SECTION 26

(b) (f) (g) (h) DESCRIPTION OF MONUMENT FOUND AT THIS CORNER AND IF IT WAS ACCEPTED, STATE ALL EVIDENCE (MATERIAL, TESTIMONIAL, OCCUPATIONAL, PLATS, RECORDS, OTHER MONUMENTS) USED AS BASIS FOR ACCEPTING. IF NOT ACCEPTED OR IF NOTHING WAS FOUND, STATE EVIDENCE USED AS BASIS FOR ESTABLISHING LOCATION. IF REESTABLISHED THROUGH LOST CORNER PROPORTIONATE METHODS, INDICATE ALL MONUMENTS, DISTANCES AND DIRECTIONS USED TO ESTABLISH. INDICATE TYPE OF MONUMENT FOUND OR SET AND SIGN POST.

THIS CORNER WAS FOUND BY WILLIAM KELLY S-1098, ON DECEMBER 31, 1974. HE SAYS THAT "OLD BEARING TREES BOTH BLAZED ARE DEAD" HE ALSO STATED THAT WARREN WECKWORTH WAS A RESIDENT WITNESS. I WROTE A LETTER TO WILLIAM KELLY, TO ELABORATE ON THIS CORNER. HIS REPLY WAS AS BRIEF AS THE ORIGINAL TIE SHEET. MIKE WECKWORTH TOOK ME TO A 1-1/4" ALUMINUM PIPE THAT HE THOUGHT WAS THIS CORNER. I LATER FOUND THE ALUMINUM MONUMENT, 100 FEET EAST OF THE ALUMINUM PIPE. TIES WERE GONE, SO I RETIED THE MONUMENT, SET CARSONITE SIGN ON NORTH SIDE OF MONUMENT.

KELLY FOUND A WOOD POST, SCRIBED ON FOUR SIDES, FOR CORNER. HE SET A LINCOLN COUNTY ALUMINUM MONUMENT FOR CORNER.

(c) (d) (e) PLAN VIEW OF CORNER WITH TIES TO AT LEAST 4 WITNESS MONUMENTS. IF IN DISAGREEMENT WITH PREVIOUSLY ESTABLISHED CORNER, SHOW THE DISTANCES BETWEEN THE TWO CORNERS AND ALSO INDICATE THE TIES TO THE DISPUTED CORNER.



(i) I, DAVID L. OSTERBRINK RLS-2014
 (TYPE OR PRINT NAME) CERTIFY THAT THE CORNER LOCATION ON THIS RECORD WAS DETERMINED BY ME OR UNDER MY DIRECTION AND CONTROL AND THAT THIS U.S. PUBLIC LAND SURVEY MONUMENT RECORD IS CORRECT AND COMPLETE TO THE BEST OF MY KNOWLEDGE AND BELIEF.

David L. Osterbrink
 SIGNATURE 10-10-97
 DATE



INDEX NO. 5-21

See Higginbotham tie dated 11-25-97. Corner ReDone

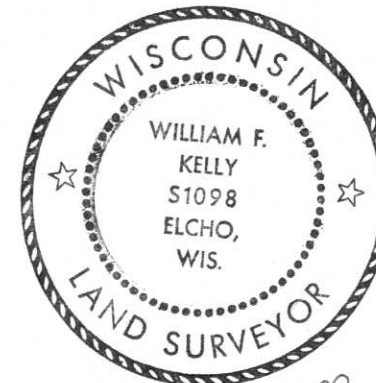
CERTIFIED LAND CORNER RESTORATION

Index No. 5-21

State of Wisconsin }
 County of LINCOLN } ss.

I WILLIAM F. KELLY, do hereby certify that on the 31 st day of DECEMBER, 19 74, I found evidence of the 1/4 COR. SECTION corner of SECTION 25 Township 32, North, Range 4 EAST, Fourth, Principal Meridian, as described hereon; and that from this evidence I established a new monument and accessories as described hereon to perpetuate the original location of this corner.

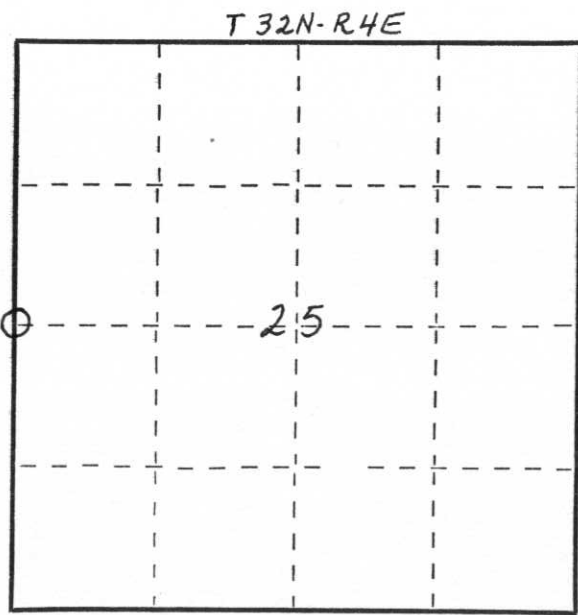
Resident witnesses:
WARREN WECKWORTH



William F. Kelly

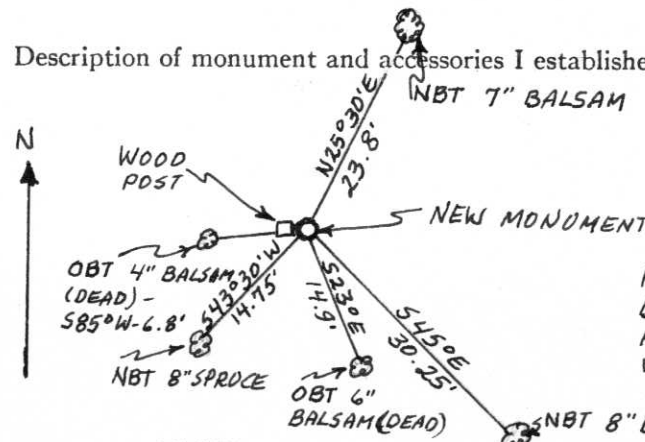
History of original corner establishment:

Description of corner evidence found:
 LOCATED SQUARED WOOD POST IDENTIFIED BY RESIDENT WITNESS, WARREN WECKWORTH, AS THE WEST 1/4 CORNER, SECTION 25.
 OLD BEARING TREES BOTH BLAZED ARE DEAD



○ = Corner monument restored.

Description of monument and accessories I established to perpetuate the original location of this corner.



SET NEW LINCOLN COUNTY MONUMENT FLUSH WITH GROUND AND RESET WOOD POST AS A WITNESS TO CORNER. MARKED THREE NEW BEARING TREES.
 MONUMENT MARKED:

NEW BEARING TREES
 BLAZED NBT CHEST
 HIGH AND MARKED
 WITH A + AT BASE.



Dated at ELCHO, Wis., this 31 st day of DECEMBER, 19 74

Signature William F. Kelly Title REGISTERED LAND SURVEYOR Registration No. S 1098
 (County Surveyor, Registered Land Surveyor, or other duly authorized official)

Office of Register of Deeds, County of _____, I hereby certify that the within instrument was filed in this office for record on the _____ day of _____, 19 _____ at _____ o'clock _____ M.

 (Register of Deeds)
 By _____ Deputy



LINCOLN COUNTY DISTURBING
PREVIOUS PROPERTY FOR BENEFIT OF THE PUBLIC BY MARKER

1/4 SECT COR
26-25
T32NR4E
WFK



