

# LINCOLN COUNTY U.S. PUBLIC LAND TIE SHEET RECORD

SECTION 36  
TOWNSHIP 32N  
RANGE 4 E

363241  
NO.

LANDMARK

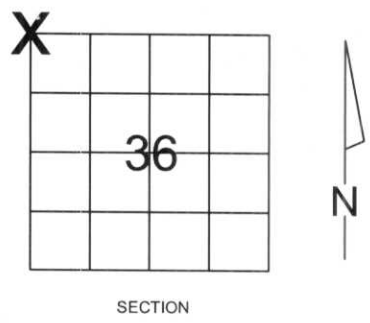
**CORNING**  
CITY, VILLAGE, TOWN

CORNER INDENTITY: BERNSTEN MONUMENT

LINCOLN COUNTY COORDINATE: N: 137731.182  
E: 327541.416

DATE OF SURVEY: October 29, 2007  
SURVEY PARTY: Eron

FOUND   
SET   
RE-SET   
RE-TIED



Description of monument found at this corner and if was accepted, state all evidence (material, testimonial, occupational, plats, records, other monuments) used as a basis for accepting. If not accepted or if nothing was found, state evidence used as basis for establishing location. If reestablished through lost corner proportionate methods, indicate all monuments, distances and directions used to establish.

## BASIS FOR MONUMENT LOCATION:

(DESCRIBE METHOD OF SURVEY AND CORNER AUTHENTICATION)  
No evidence remained of the corner. Corner was set by double proportionate measurement. Set Lincoln County Bernsten Monument at Corner.



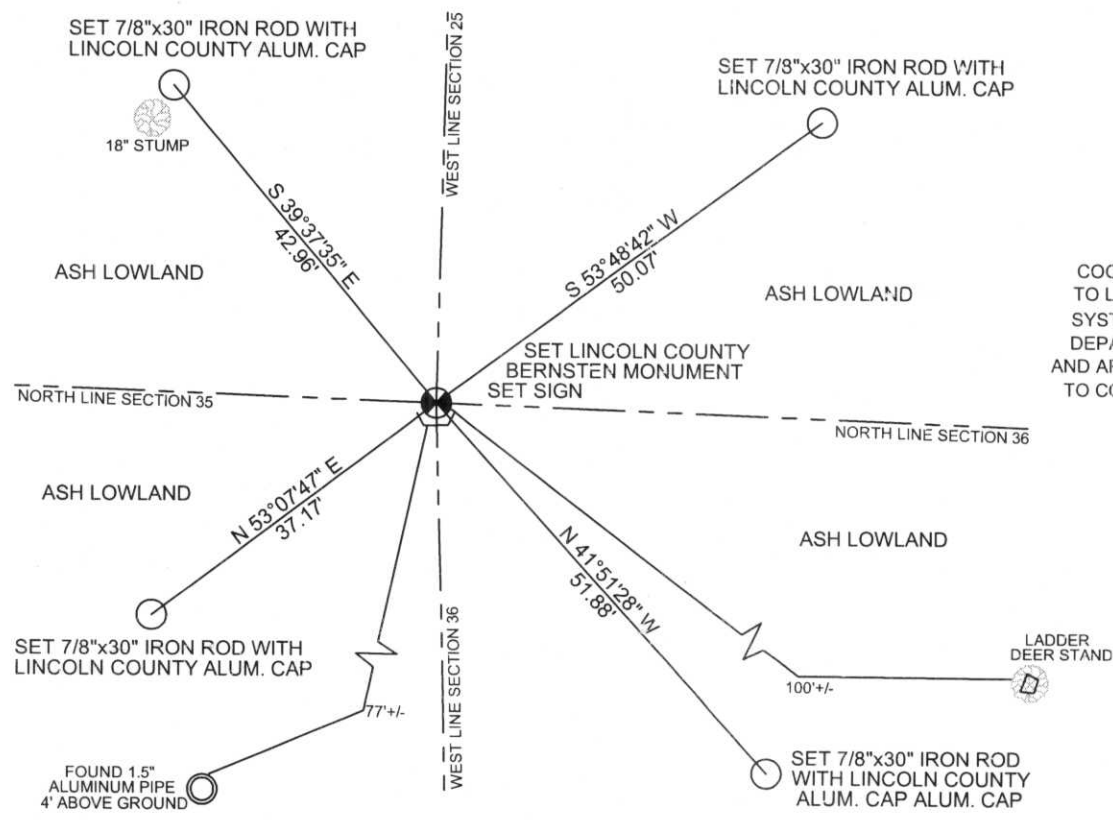
**CWE, Inc.**  
5707 SCHOFIELD AVE.  
WESTON, WISCONSIN  
54476  
PHONE: (715) 359-9400  
FAX: (715) 355-4199  
general@cwengineers.com  
www.cwengineers.com

RECEIVED BY LINCOLN COUNTY  
SURVEYOR THIS 2<sup>ND</sup> DAY  
OF November 20 07  
Tomy Dull  
COUNTY SURVEYOR

CERTIFIED CORRECT:  
[Signature]  
Ronald Jacobson RLS 2059-008  
Registered Land Surveyor  
DATE: November 2, 2007

## TIE SKETCH:

SHOW MINIMUM OF FOUR (4) HORIZONTAL TIE DISTANCES TO FIXED WITNESS MONUMENTS.  
DESCRIBE ALL MONUMENTS FOUND OR SET. ALL DISTANCES SHOWN IN US SURVEY FEET.



COORDINATES ARE REFERENCED TO LINCOLN COUNTY COORDINATE SYSTEM AS DEVELOPED BY THE WI. DEPARTMENT OF TRANSPORTATION AND ARE BASED ON GPS OBSERVATIONS TO CONTROL POINTS AS SUPPLIED BY LINCOLN COUNTY.

NOT TO SCALE  
BEARINGS REFERENCED TO LINCOLN COUNTY COORDINATE SYSTEM









