

LINCOLN COUNTY U.S. PUBLIC LAND TIE SHEET RECORD

SECTION 25
TOWNSHIP 32N
RANGE 4 E

253245
NO.

LANDMARK

CORNING

CITY, VILLAGE, TOWN

CORNER INDENTITY: BERNSTEN MONUMENT

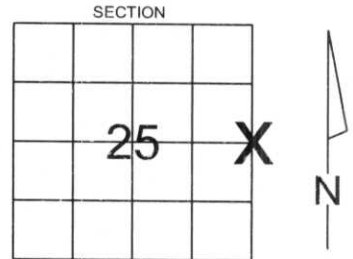
LINCOLN COUNTY COORDINATE: N: 140257.954

E: 332861.866

DATE OF SURVEY: July 23, 2007

SURVEY PARTY: Eron

FOUND
SET
RE-SET
RE-TIED



Description of monument found at this corner and if was accepted, state all evidence (material, testimonial, occupational, plats, records, other monuments) used as a basis for accepting. If not accepted or if nothing was found, state evidence used as basis for establishing location. If reestablished through lost corner proportionate methods, indicate all monuments, distances and directions used to establish.

BASIS FOR MONUMENT LOCATION:

(DESCRIBE METHOD OF SURVEY AND CORNER AUTHENTICATION)

Set Lincoln County Bernsten Monument at corner. Lincoln County Bernsten Monument was based on evidence found at corner and comparison to original notes and testimony from landowner. Corner was set based on blazes and direction of blazes facing the corner.



RECEIVED BY LINCOLN COUNTY
SURVEYOR THIS 3RD DAY
OF August 20 07
[Signature]
COUNTY SURVEYOR

CERTIFIED CORRECT:

[Signature]

Ronald Jacobson RLS 2059-008

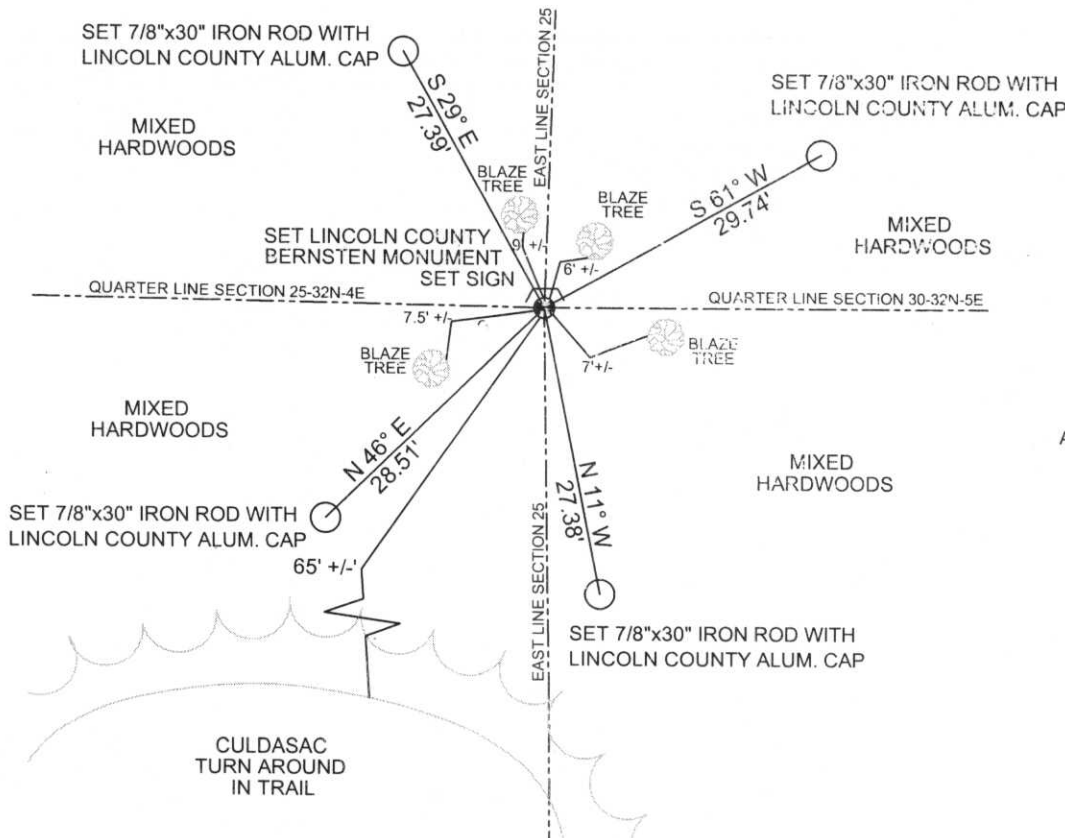
Registered Land Surveyor

DATE: July 27, 2007

COMPANY: Central Wisconsin Engineers & Architects
5707 Schofield Ave.
Weston, Wisconsin 54476
(715) 359-9400

TIE SKETCH:

SHOW MINIMUM OF FOUR (4) HORIZONTAL TIE DISTANCES TO FIXED WITNESS MONUMENTS.
DESCRIBE ALL MONUMENTS FOUND OR SET. ALL DISTANCES SHOWN IN US SURVEY FEET.



COORDINATES ARE REFERENCED TO LINCOLN COUNTY COORDINATE SYSTEM AS DEVELOPED BY THE WI. DEPARTMENT OF TRANSPORTATION AND ARE BASED ON GPS OBSERVATIONS TO CONTROL POINTS AS SUPPLIED BY LINCOLN COUNTY.

NOT TO SCALE
BEARINGS REFERENCED TO MAGNETIC NORTH









