

LINCOLN COUNTY U.S. PUBLIC LAND TIE SHEET RECORD

SECTION 36
TOWNSHIP 32N
RANGE 4 E

363242
NO.

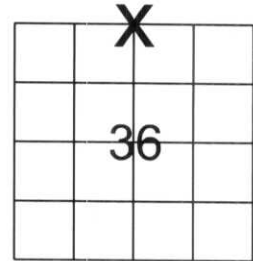
LANDMARK

CORNING
CITY, VILLAGE, TOWN

CORNER INDENTITY: BERNSTEN MONUMENT

LINCOLN COUNTY COORDINATE: N: 137634.137
E: 330218.152

FOUND
SET
RE-SET
RE-TIED



SECTION

DATE OF SURVEY: October 29, 2007
SURVEY PARTY: Eron

Description of monument found at this corner and if was accepted, state all evidence (material, testimonial, occupational, plats, records, other monuments) used as a basis for accepting. If not accepted or if nothing was found, state evidence used as basis for establishing location. If reestablished through lost corner proportionate methods, indicate all monuments, distances and directions used to establish.

BASIS FOR MONUMENT LOCATION:

(DESCRIBE METHOD OF SURVEY AND CORNER AUTHENTICATION)
No evidence remained of the corner. Corner was set by single proportionate measurement. Set Lincoln County Bernsten Monument at Corner.



RECEIVED BY LINCOLN COUNTY
SURVEYOR THIS 2ND DAY
OF November 20 07
Tony Dall
COUNTY SURVEYOR

CERTIFIED CORRECT:

Ronald Jacobson RLS 2059-008

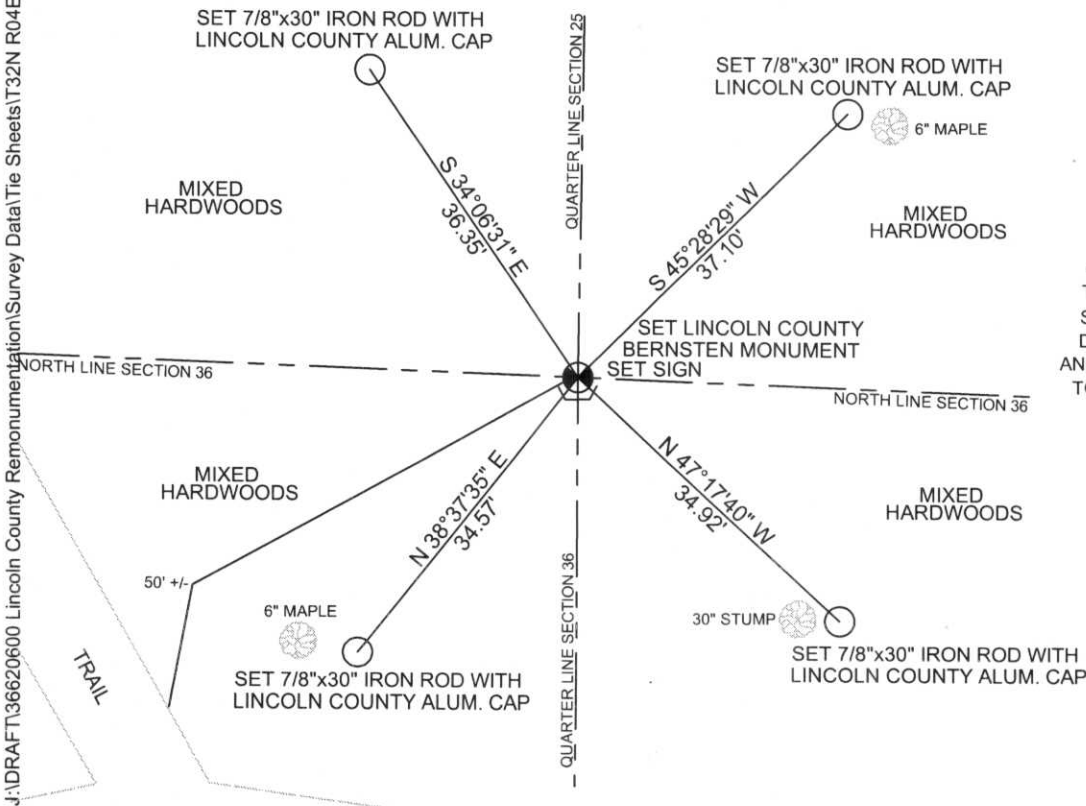
Registered Land Surveyor

DATE: November 2, 2007

J:\DRAFT\36620600 Lincoln County Remonumentation\Survey Data\Tie Sheets\T32N R04E\Sec.36\363242.c
36 Corner.dwg, 11/2/2007 1:06:51 PM
CWE, Inc.
5707 SCHOFIELD AVE.
WESTON, WISCONSIN
54476
PHONE: (715) 359-9400
FAX: (715) 355-4199
general@cwengineers.com
www.cwengineers.com

TIE SKETCH:

SHOW MINIMUM OF FOUR (4) HORIZONTAL TIE DISTANCES TO FIXED WITNESS MONUMENTS.
DESCRIBE ALL MONUMENTS FOUND OR SET. ALL DISTANCES SHOWN IN US SURVEY FEET.



COORDINATES ARE REFERENCED TO LINCOLN COUNTY COORDINATE SYSTEM AS DEVELOPED BY THE WI. DEPARTMENT OF TRANSPORTATION AND ARE BASED ON GPS OBSERVATIONS TO CONTROL POINTS AS SUPPLIED BY LINCOLN COUNTY.

NOT TO SCALE
BEARINGS REFERENCED TO LINCOLN COUNTY COORDINATE SYSTEM