

U.S. PUBLIC LAND SURVEY MONUMENT RECORD

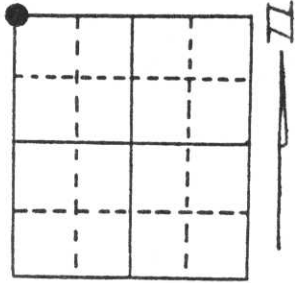
Note: This form is intended and designed to fulfill all requirements of Wisconsin Administrative Code, Chapter A-E 5.02, U.S. Public Land Survey Monument Record (3) (a) (b) (c) (d) (e) (f) (g) (h) (i). An additional sheet may be added if necessary to conform with said requirements.

(a) Corner location: Township 32 North

Range 5 East

Town/City/Village TOWN OF HARDING

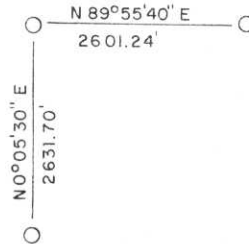
County LINCOLN



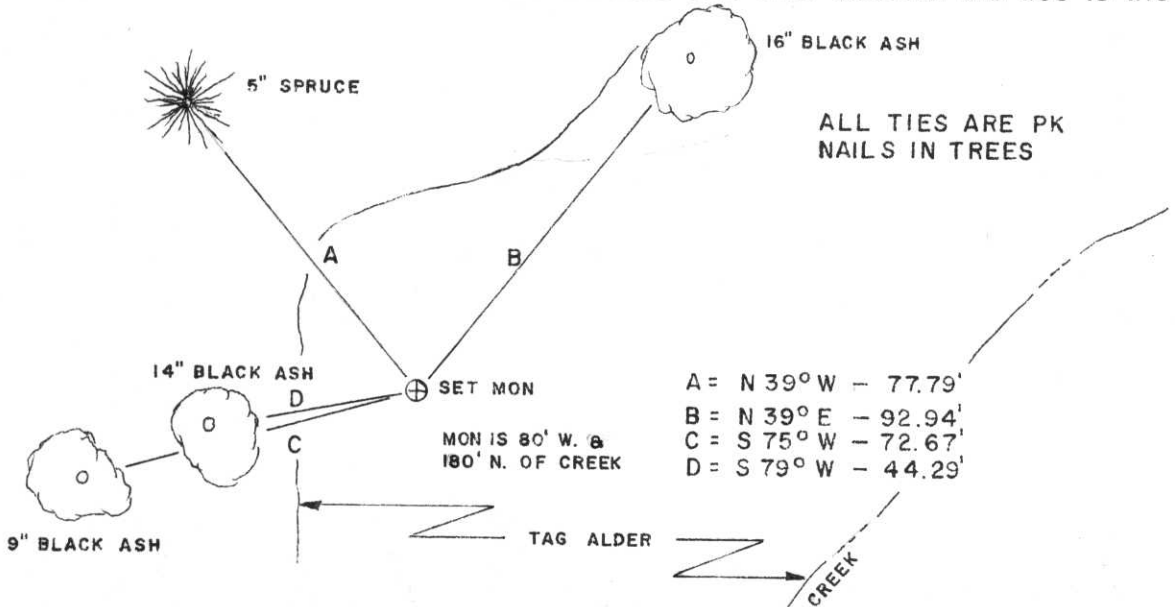
Section 31

(b) (f) (g) (h) Description of monument found at this corner and if it was accepted, state all evidence (material, testimonial, occupational, plats, records, other monuments) used as a basis for accepting. If not accepted or if nothing was found, state evidence used as basis for establishing location. If reestablished through lost corner proportionate methods, indicate all monuments, distances and directions used to establish.

An extensive search was completed for original or secondary evidence of this corner location. After the search provided no positive evidence of the corner location, I decided to use the topographic calls to the creek as the best evidence of the original location for this corner. This location fits very well with the original distance to the existing Southwest corner of Section 31.



(c) (d) (e) Plan view of corner with ties to at least 4 witness monuments. If in disagreement with previously established corner, show the distances between the two corners and also indicate the ties to the disputed corner.



(i) I, DAN HIGGINBOTHAM

(type or print name) certify that the corner location on this record was determined by me or under my direction and control and that this U.S. Public Land Survey Monument Record is correct and complete to the best of my knowledge and belief.

Dan Higginbotham 2-09-94
Signature Date

OPEN WATER
GRASS

RECEIVED AT LINCOLN COUNTY COURTHOUSE THIS N DAY OF March 1994

TAX DESCRIPTION OFFICE

Index No. 4-1



13 10:26 AM



13 10:16 AM



13 10:17 AM