

U.S. PUBLIC LAND SURVEY MONUMENT RECORD

NOTE: THIS FORM IS INTENDED AND DESIGNED TO FULFILL ALL REQUIREMENTS OF WISCONSIN ADMINISTRATIVE CODE, CHAPTER A-E 7.08 U.S. PUBLIC LAND SURVEY MONUMENT RECORD (3) (a) (b) (c) (d) (e) (f) (g) (h) (i). AN ADDITIONAL SHEET MAY BE ADDED IF NECESSARY TO CONFORM WITH SAID REQUIREMENTS.

(a) CORNER LOCATION: TOWNSHIP 32 NORTH
 RANGE 4 EAST/~~WEST~~
 TOWN/~~XXX/XXXX~~ CORNING
 COUNTY LINCOLN



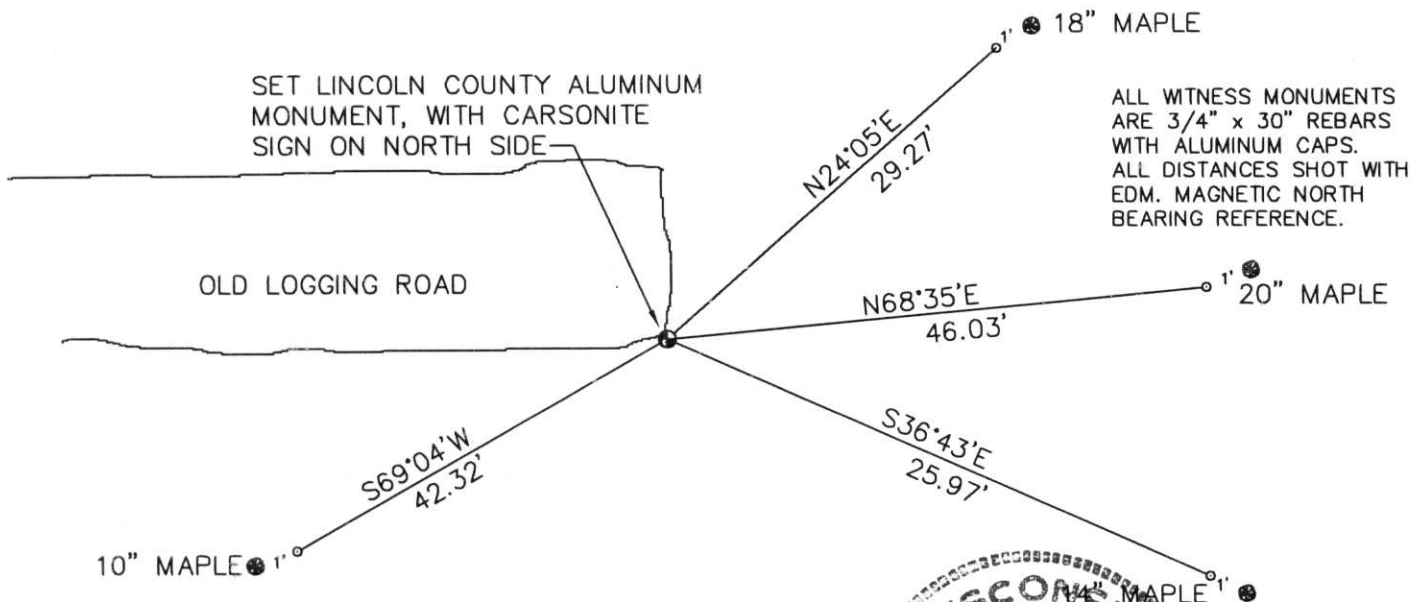
SECTION 25

(b) (f) (g) (h) DESCRIPTION OF MONUMENT FOUND AT THIS CORNER AND IF IT WAS ACCEPTED, STATE ALL EVIDENCE (MATERIAL, TESTIMONIAL, OCCUPATIONAL, PLATS, RECORDS, OTHER MONUMENTS) USED AS BASIS FOR ACCEPTING. IF NOT ACCEPTED OR IF NOTHING WAS FOUND, STATE EVIDENCE USED AS BASIS FOR ESTABLISHING LOCATION. IF REESTABLISHED THROUGH LOST CORNER PROPORTIONATE METHODS, INDICATE ALL MONUMENTS, DISTANCES AND DIRECTIONS USED TO ESTABLISH. INDICATE TYPE OF MONUMENT FOUND OR SET AND SIGN POST.

I TALKED WITH ELMER NATZKE, LONG TIME RESIDENT AND OWNER OF MANY ACRES OF LAND. HE SAID THIS CORNER WAS ALWAYS THERE, AND NO ONE DISPUTED IT. HE TALKED OF SURVEYORS USING IT AS A STARTING POINT FOR MEASURING FROM. WALKED INTO CORNER, FOUND 1-1/4" IRON PIPE, 4 FEET LONG, WITH A ROTTED 4"x4" SCRIBED WOOD POST WIRED TO IT. REMOVED PIPE, SET LINCOLN COUNTY BERNTSEN ALUMINUM MONUMENT IN ITS PLACE. TIED CORNER OUT. SEARCHED AREA, FOUND NO OTHER EVIDENCE FOR CORNER.

**RECEIVED AT LINCOLN COUNTY
 COURTHOUSE THIS 27th DAY
 OF Oct 1997
Pat Spieker
 TAX DESCRIPTION OFFICE**

(c) (d) (e) PLAN VIEW OF CORNER WITH TIES TO AT LEAST 4 WITNESS MONUMENTS. IF IN DISAGREEMENT WITH PREVIOUSLY ESTABLISHED CORNER, SHOW THE DISTANCES BETWEEN THE TWO CORNERS AND ALSO INDICATE THE TIES TO THE DISPUTED CORNER.



ALL WITNESS MONUMENTS ARE 3/4" x 30" REBARS WITH ALUMINUM CAPS. ALL DISTANCES SHOT WITH EDM. MAGNETIC NORTH BEARING REFERENCE.



INDEX NO. Q-25

(i) I, DAVID L. OSTERBRINK RLS S-2014
 (TYPE OR PRINT NAME) CERTIFY THAT THE CORNER LOCATION ON THIS RECORD WAS DETERMINED BY ME OR UNDER MY DIRECTION AND CONTROL AND THAT THIS U.S. PUBLIC LAND SURVEY MONUMENT RECORD IS CORRECT AND COMPLETE TO THE BEST OF MY KNOWLEDGE AND BELIEF.
David L. Osterbrink 10-13-97
 SIGNATURE DATE