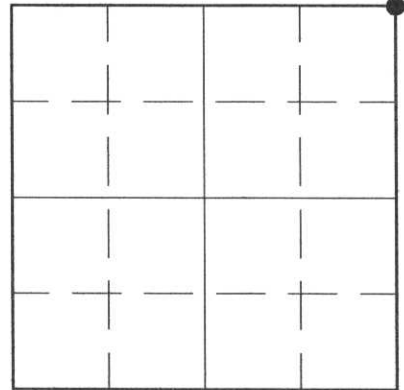


# U.S. PUBLIC LAND SURVEY MONUMENT RECORD

HISTORY OF ORIGINAL CORNER ESTABLISHMENT AND SUBSEQUENT RESTORATION AND DESCRIPTION OF ANY RECORD, MONUMENT OCCUPATIONAL, TESTIMONIAL OR OTHER EVIDENCE CONSIDERED:

THIS CORNER WAS SET USING DOUBLE PROPORTIONATE MEASUREMENT FROM THE NORTHEAST CORNER OF SECTION 25 TO THE NORTHWEST CORNER SECTION 27 AND FROM THE NORTHEAST CORNER SECTION 23 TO THE WEST 1/4 CORNER SECTION 36.

● = LOCATION OF CORNER



SECTION 26

TOWNSHIP 32 NORTH, RANGE 4 EAST

TOWN OF CORNING(CENTRAL)

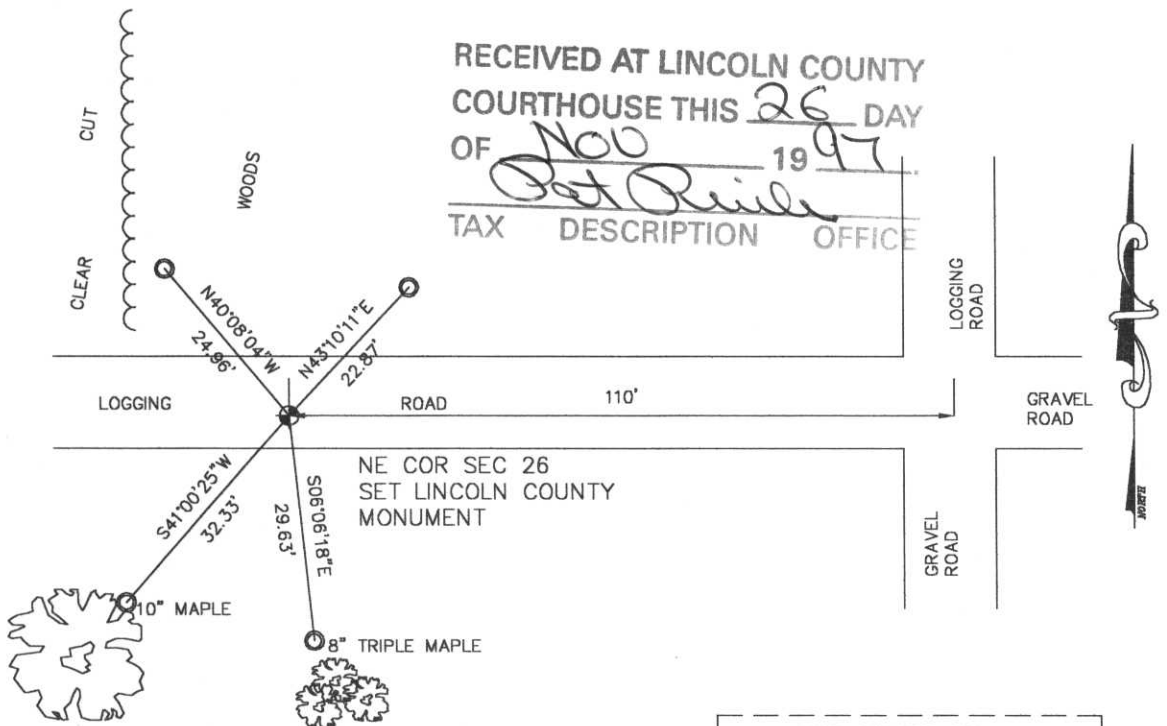
LINCOLN COUNTY, WISCONSIN

CORNER WAS: (CHECK ALL THAT APPLY)

- RESTORED THROUGH ACCEPTANCE OF AN OBLITERATED EVIDENCE LOCATION
- RESTORED THROUGH ACCEPTANCE OF A FOUND PERPETUATED LOCATION
- CONSIDERED A LOST CORNER AND REESTABLISHED THROUGH LOST CORNER PROPORTIONATE METHODS (INCLUDE A PLAN VIEW DRAWING SHOWING DISTANCES AND DIRECTIONS TO OTHER PUBLIC LAND SURVEY CORNERS USED FOR PROPORTIONING AND DETERMINING THE CORNER LOCATION)
- RESTORED OR REESTABLISHED IN A LOCATION THAT DIFFERS FROM A PREVIOUS RESTORATION OR REESTABLISHMENT (INCLUDE A PLAN VIEW DRAWING AND INDICATE WHAT WAS SET AND/OR FOUND)
- CHECK IF THERE IS ADDITIONAL INFORMATION ON BACK

DESCRIBE THE MONUMENT AND ACCESSORIES USED TO PERPETUATE THE LOCATION OF THE CORNER. (INCLUDE A PLAN VIEW DRAWING AND INDICATE WHAT WAS SET AND/OR FOUND) ALSO INCLUDE FOUR TIES TO THE SECTION CORNER AND DESCRIPTION OF THE TIES.

SET LINCOLN COUNTY  
WITNESS CORNERS AT ALL TIES



RECEIVED AT LINCOLN COUNTY  
COURTHOUSE THIS 26 DAY  
OF NOV 1997  
*Pat Reile*  
TAX DESCRIPTION OFFICE

**DANIEL E. HIGGINBOTHAM**

(type or print name) CERTIFY THAT THE CORNER LOCATION SHOWN ON THIS RECORD WAS DETERMINED BY ME OR UNDER MY DIRECTION AND CONTROL AND THAT THIS U.S. PUBLIC LAND SURVEY MONUMENT RECORD IS CORRECT AND COMPLETE TO THE BEST OF MY KNOWLEDGE AND BELIEF.

*Dan Higginbotham*  
SIGNATURE

11/25/97  
DATE



INDEX NO. Q-21



WINDY HOLLOW CO. N.Y.  
MARKER  
DISTURBING  
WINDY HOLLOW CO. N.Y.  
MARKER

23 24  
26 25







