

# LINCOLN COUNTY U.S. PUBLIC LAND TIE SHEET RECORD

SECTION 28  
TOWNSHIP 32N  
RANGE 4 E

283242  
NO.

LANDMARK

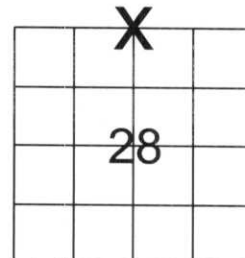
**CORNING**  
CITY, VILLAGE, TOWN

CORNER INDENTITY: 1.0" IRON PIPE

LINCOLN COUNTY COORDINATE: N: 143197.350  
E: 313837.141

DATE OF SURVEY: October 22, 2007  
SURVEY PARTY: Eron/Nieds

FOUND   
SET   
RE-SET   
RE-TIED



SECTION

Description of monument found at this corner and if was accepted, state all evidence (material, testimonial, occupational, plats, records, other monuments) used as a basis for accepting. If not accepted or if nothing was found, state evidence used as basis for establishing location. If reestablished through lost corner proportionate methods, indicate all monuments, distances and directions used to establish.

## BASIS FOR MONUMENT LOCATION:

(DESCRIBE METHOD OF SURVEY AND CORNER AUTHENTICATION)

Found 1.0" iron pipe at corner. Property evidence, blue lines and comparison to the original notes supports the 1.0" iron pipe as corner.



**CWE, Inc.**

5707 SCHOFIELD AVE.  
WESTON, WISCONSIN  
54476

PHONE: (715) 359-9400  
FAX: (715) 355-4199

general@cwengineers.com  
www.cwengineers.com

RECEIVED BY LINCOLN COUNTY  
SURVEYOR THIS 2<sup>ND</sup> DAY  
OF November 20 07  
Tom Dahl  
COUNTY SURVEYOR

CERTIFIED CORRECT:

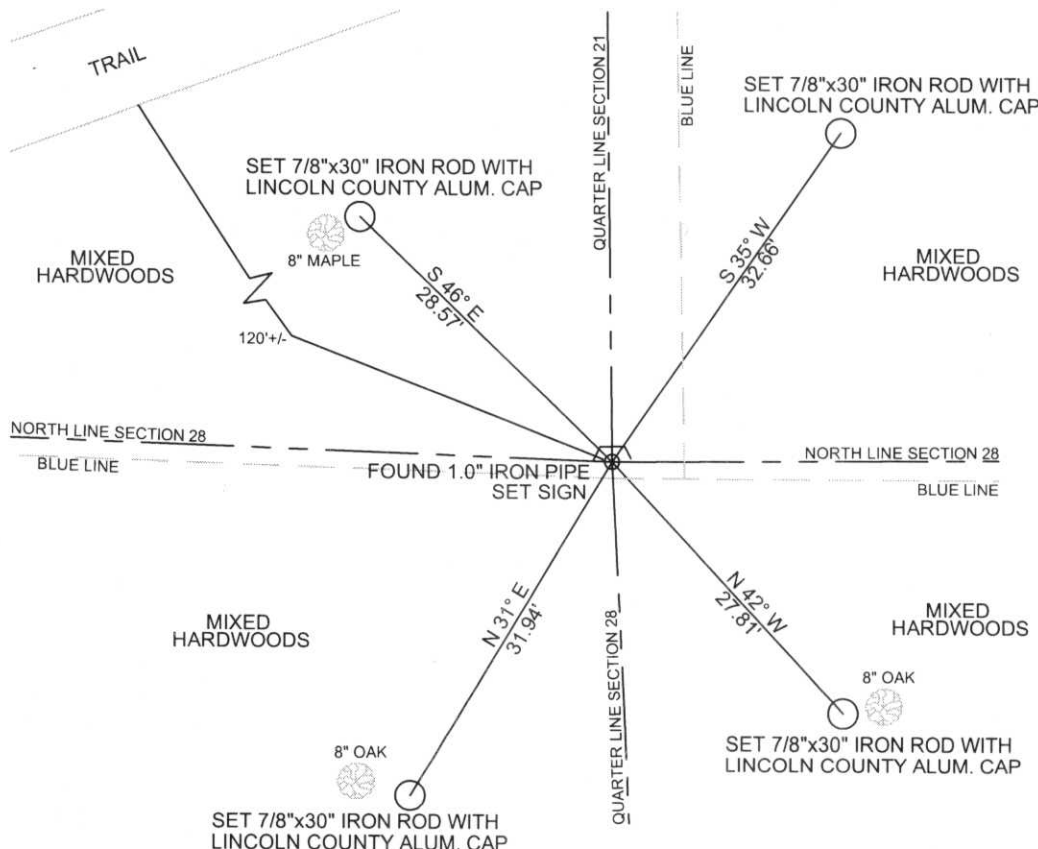
Ronald Jacobson  
Ronald Jacobson RLS 2059-008

Registered Land Surveyor

DATE: October 26, 2007

## TIE SKETCH:

SHOW MINIMUM OF FOUR (4) HORIZONTAL TIE DISTANCES TO FIXED WITNESS MONUMENTS.  
DESCRIBE ALL MONUMENTS FOUND OR SET. ALL DISTANCES SHOWN IN US SURVEY FEET.



COORDINATES ARE REFERENCED TO LINCOLN COUNTY COORDINATE SYSTEM AS DEVELOPED BY THE WI. DEPARTMENT OF TRANSPORTATION AND ARE BASED ON GPS OBSERVATIONS TO CONTROL POINTS AS SUPPLIED BY LINCOLN COUNTY.

NOT TO SCALE  
BEARINGS REFERENCED TO MAGNETIC NORTH









