

# LINCOLN COUNTY U.S. PUBLIC LAND TIE SHEET RECORD

SECTION 17  
TOWNSHIP 32N  
RANGE 4 E

173244  
NO.

LANDMARK

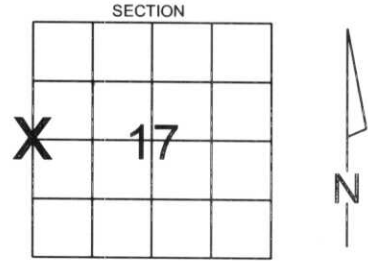
**CORNING**  
CITY, VILLAGE, TOWN

CORNER INDENTITY: BERNSTEN MONUMENT

LINCOLN COUNTY COORDINATE: N:151298.6920  
E:305924.1490

DATE OF SURVEY: August 16, 2007  
SURVEY PARTY: Dahlvig/Nieds

FOUND   
SET   
RE-SET   
RE-TIED



Description of monument found at this corner and if was accepted, state all evidence (material, testimonial, occupational, plats, records, other monuments) used as a basis for accepting. If not accepted or if nothing was found, state evidence used as basis for establishing location. If reestablished through lost corner proportionate methods, indicate all monuments, distances and directions used to establish.

## BASIS FOR MONUMENT LOCATION:

(DESCRIBE METHOD OF SURVEY AND CORNER AUTHENTICATION)

No evidence remained of the corner. Set Lincoln County Bernsten Monument at corner. Corner was set by single proportionate measurement.



RECEIVED BY LINCOLN COUNTY  
SURVEYOR THIS 25<sup>TH</sup> DAY  
OF September 20 07  
Tommy Dahl  
COUNTY SURVEYOR

CERTIFIED CORRECT:

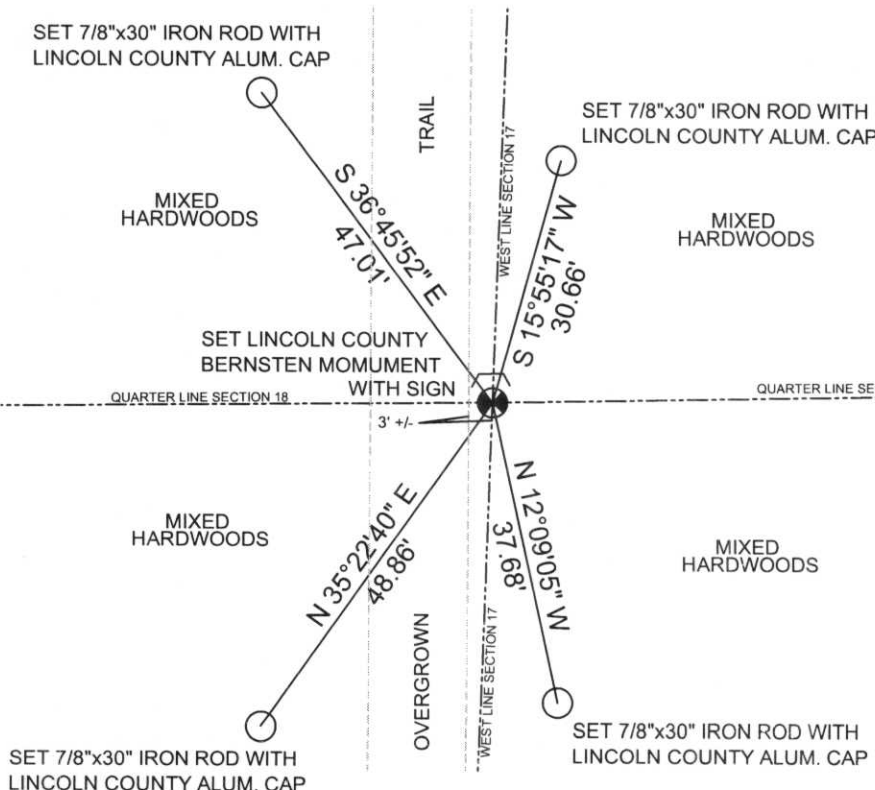
Ronald Jacobson  
Ronald Jacobson RLS 2059-008  
Registered Land Surveyor

COMPANY: Central Wisconsin Engineers & Architects  
5707 Schofield Ave.  
Weston, Wisconsin 54476  
(715) 359-9400

DATE: September 12, 2007

## TIE SKETCH:

SHOW MINIMUM OF FOUR (4) HORIZONTAL TIE DISTANCES TO FIXED WITNESS MONUMENTS.  
DESCRIBE ALL MONUMENTS FOUND OR SET. ALL DISTANCES SHOWN IN US SURVEY FEET.



COORDINATES ARE REFERENCED TO LINCOLN COUNTY COORDINATE SYSTEM AS DEVELOPED BY THE WI. DEPARTMENT OF TRANSPORTATION AND ARE BASED ON GPS OBSERVATIONS TO CONTROL POINTS AS SUPPLIED BY LINCOLN COUNTY.

NOT TO SCALE  
BEARINGS REFERENCED TO THE LINCOLN COUNTY COORDINATE SYSTEM









