

# LINCOLN COUNTY U.S. PUBLIC LAND TIE SHEET RECORD

SECTION 13  
TOWNSHIP 32N  
RANGE 4 E

133244

LANDMARK

CORNER INDENTITY: BERNSTEN MONUMENT

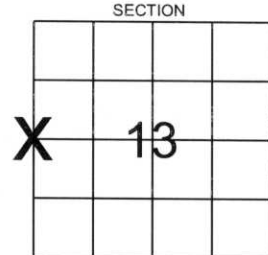
LINCOLN COUNTY COORDINATE: N: 150934.799  
E: 327538.933

DATE OF SURVEY: September 24, 2007  
SURVEY PARTY: Eron

**CORNING**  
CITY, VILLAGE, TOWN

NO.

FOUND   
SET   
RE-SET   
RE-TIED

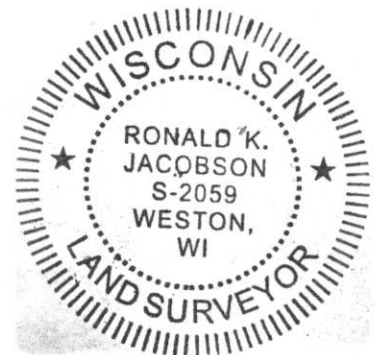


Description of monument found at this corner and if was accepted, state all evidence (material, testimonial, occupational, plats, records, other monuments) used as a basis for accepting. If not accepted or if nothing was found, state evidence used as basis for establishing location. If reestablished through lost corner proportionate methods, indicate all monuments, distances and directions used to establish.

## BASIS FOR MONUMENT LOCATION:

(DESCRIBE METHOD OF SURVEY AND CORNER AUTHENTICATION)

Found steel "T" post near corner, no other evidence remains. Set Lincoln County Bernsten Monument by single proportionate measurement.



CERTIFIED CORRECT:

*[Signature]*

Ronald Jacobson RLS 2059-008

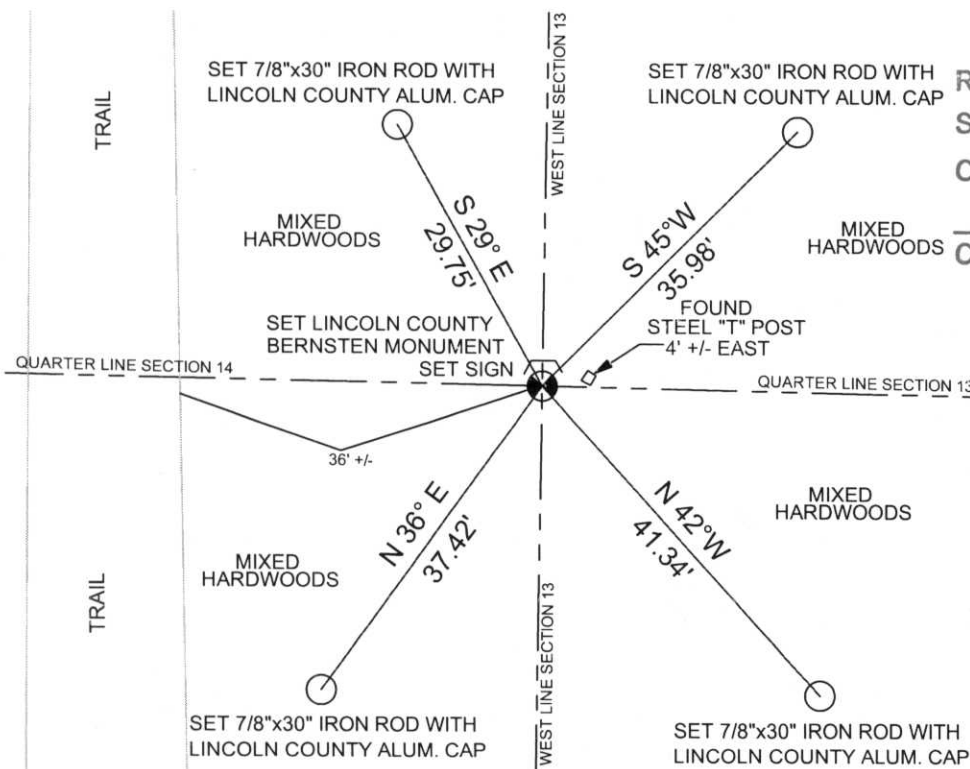
Registered Land Surveyor

DATE: September 26, 2007

COMPANY: Central Wisconsin Engineers & Architects  
5707 Schofield Ave.  
Weston, Wisconsin 54476  
(715) 359-9400

## TIE SKETCH:

SHOW MINIMUM OF FOUR (4) HORIZONTAL TIE DISTANCES TO FIXED WITNESS MONUMENTS.  
DESCRIBE ALL MONUMENTS FOUND OR SET. ALL DISTANCES SHOWN IN US SURVEY FEET.



RECEIVED BY LINCOLN COUNTY  
SURVEYOR THIS 28<sup>TH</sup> DAY  
OF September 20 07  
*[Signature]*  
COUNTY SURVEYOR

COORDINATES ARE REFERENCED TO LINCOLN COUNTY COORDINATE SYSTEM AS DEVELOPED BY THE WI. DEPARTMENT OF TRANSPORTATION AND ARE BASED ON GPS OBSERVATIONS TO CONTROL POINTS AS SUPPLIED BY LINCOLN COUNTY.



NOT TO SCALE  
BEARINGS REFERENCED TO MAGNETIC NORTH

K-21



UNIVERSITY OF CALIFORNIA  
D. PROS. DIR. 1968  
MARKER  
COUNTY







PLEASE  
DO NOT  
DISTURB  
NEARBY

SM  
URRY

