

LINCOLN COUNTY U.S. PUBLIC LAND TIE SHEET RECORD

SECTION 24
TOWNSHIP 32N
RANGE 4 E

243242
NO.

LANDMARK

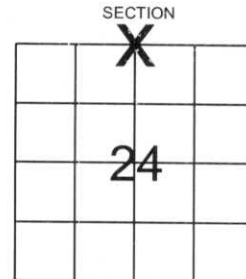
CORNING
CITY, VILLAGE, TOWN

CORNER INDENTITY: BERNSTEN MONUMENT

LINCOLN COUNTY COORDINATE: N: 148230.738
E: 330227.996

DATE OF SURVEY: July 26, 2007
SURVEY PARTY: Rutzen/Eron

FOUND
SET
RE-SET
RE-TIED



Description of monument found at this corner and if was accepted, state all evidence (material, testimonial, occupational, plats, records, other monuments) used as a basis for accepting. If not accepted or if nothing was found, state evidence used as basis for establishing location. If reestablished through lost corner proportionate methods, indicate all monuments, distances and directions used to establish.

BASIS FOR MONUMENT LOCATION:

(DESCRIBE METHOD OF SURVEY AND CORNER AUTHENTICATION)

Set Lincoln County Bernsten Monument at corner. No evidence remained of the corner. Corner was set by single proportionate measurement.



CERTIFIED CORRECT:

[Signature]

Ronald Jacobson RLS 2059-008

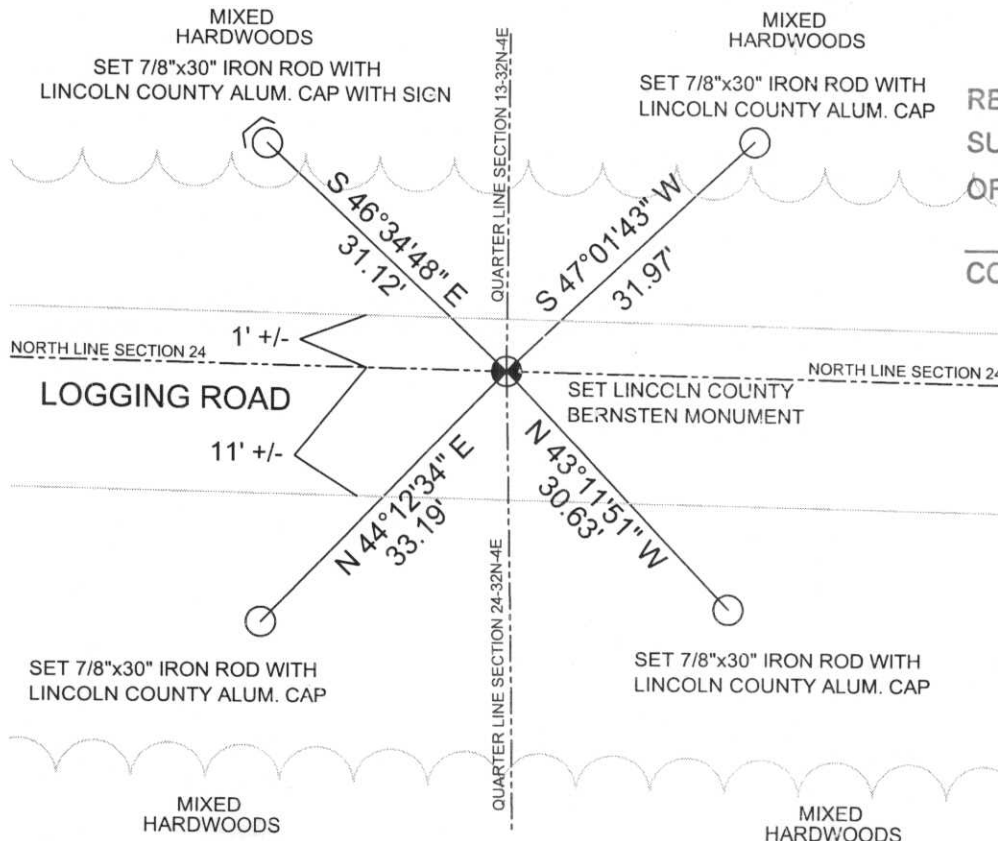
Registered Land Surveyor

DATE: July 27, 2007

COMPANY: Central Wisconsin Engineers & Architects
5707 Schofield Ave.
Weston, Wisconsin 54476
(715) 359-9400

TIE SKETCH:

SHOW MINIMUM OF FOUR (4) HORIZONTAL TIE DISTANCES TO FIXED WITNESS MONUMENTS.
DESCRIBE ALL MONUMENTS FOUND OR SET. ALL DISTANCES SHOWN IN US SURVEY FEET.



RECEIVED BY LINCOLN COUNTY
SURVEYOR THIS 3RD DAY
OF August 20 07
[Signature]
COUNTY SURVEYOR

COORDINATES ARE REFERENCED TO LINCOLN COUNTY COORDINATE SYSTEM AS DEVELOPED BY THE WI. DEPARTMENT OF TRANSPORTATION AND ARE BASED ON GPS OBSERVATIONS TO CONTROL POINTS AS SUPPLIED BY LINCOLN COUNTY.



NOT TO SCALE
BEARINGS REFERENCED TO THE LINCOLN COUNTY COORDINATE SYSTEM









