

CERTIFIED LAND CORNER RESTORATION

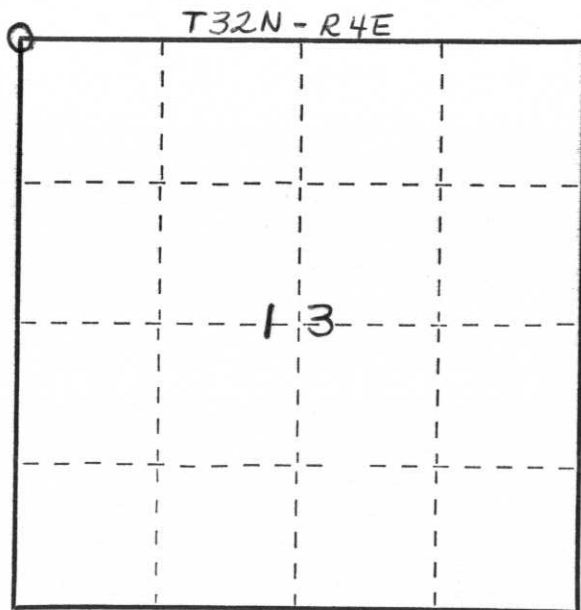
Index No. I-21

State of Wisconsin }  
 County of LINCOLN } ss.

I WILLIAM F. KELLY, do hereby certify that on the 31 st day of DECEMBER, 1975, I found evidence of the SECTION corner of SECTIONS 11, 12, 13, 14 Township 32, North, Range 4 EAST, Fourth, Principal Meridian, as described hereon; and that from this evidence I established a new monument and accessories as described hereon to perpetuate the original location of this corner.

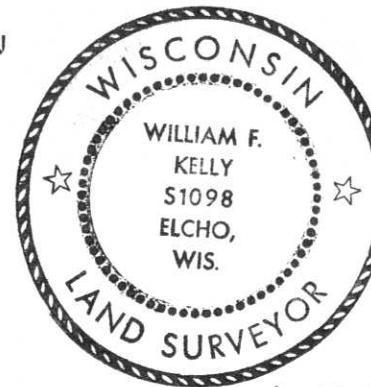
Resident witnesses:

.....  
 .....  
 .....



○ = Corner monument restored.

History of original corner establishment:

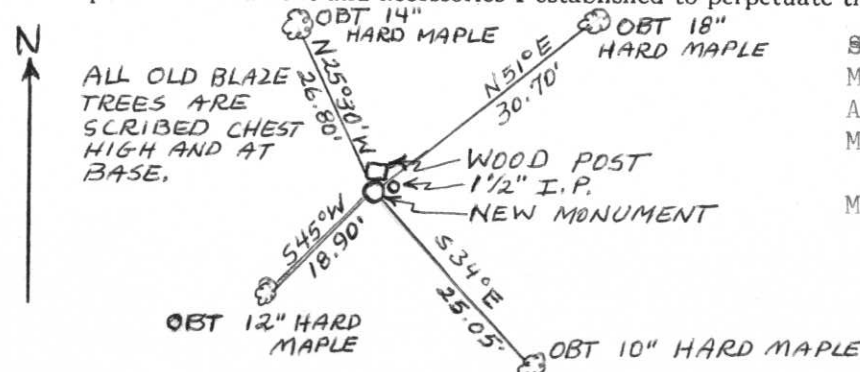


*William F. Kelly*

Description of corner evidence found:

LOCATED SQUARED POST SCRIBED <sup>S S S S</sup><sub>11 12 13 14</sub> AND A 1 1/2" I.P. AND 4 SCRIBED BEARING TREES.  
 CORNER ESTABLISHED BY GENISOT AND ASSOCIATES IN FEB. 1968.

Description of monument and accessories I established to perpetuate the original location of this corner.



SET NEW LINCOLN COUNTY MONUMENT FLUSH WITH GROUND AND RESET I.P. NEXT TO MONUMENT.

MONUMENT MARKED:



Dated at ELCHO, Wis., this 31 st day of DECEMBER, 1974

Signature William F. Kelly Title REGISTERED LAND SURVEYOR Registration No. S 1098  
 (County Surveyor, Registered Land Surveyor, or other duly authorized official)

Office of Register of Deeds, County of \_\_\_\_\_, I hereby certify that the within instrument was filed in this office for record on the \_\_\_\_\_ day of \_\_\_\_\_, 19\_\_\_\_ at \_\_\_\_\_ o'clock \_\_\_\_\_ M.

.....  
 (Register of Deeds)

By \_\_\_\_\_ Deputy