

# LINCOLN COUNTY U.S. PUBLIC LAND TIE SHEET RECORD

SECTION 14  
TOWNSHIP 32N  
RANGE 4 E

143241  
NO.

LANDMARK

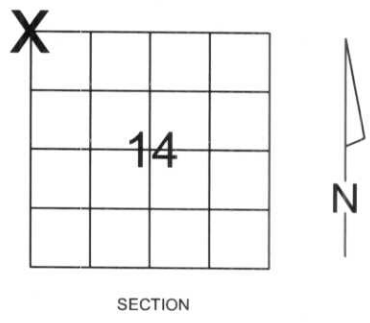
**CORNING**  
CITY, VILLAGE, TOWN

CORNER INDENTITY: 1.5 " IRON PIPE

LINCOLN COUNTY COORDINATE: N: 153630.281  
E: 322178.644

DATE OF SURVEY: October 25, 2007  
SURVEY PARTY: Eron

- FOUND
- SET
- RE-SET
- RE-TIED



Description of monument found at this corner and if was accepted, state all evidence (material, testimonial, occupational, plats, records, other monuments) used as a basis for accepting. If not accepted or if nothing was found, state evidence used as basis for establishing location. If reestablished through lost corner proportionate methods, indicate all monuments, distances and directions used to establish.

## BASIS FOR MONUMENT LOCATION:

(DESCRIBE METHOD OF SURVEY AND CORNER AUTHENTICATION)  
Found 1.5" iron pipe at corner. Comparison to original notes supports the iron pipe as the corner.



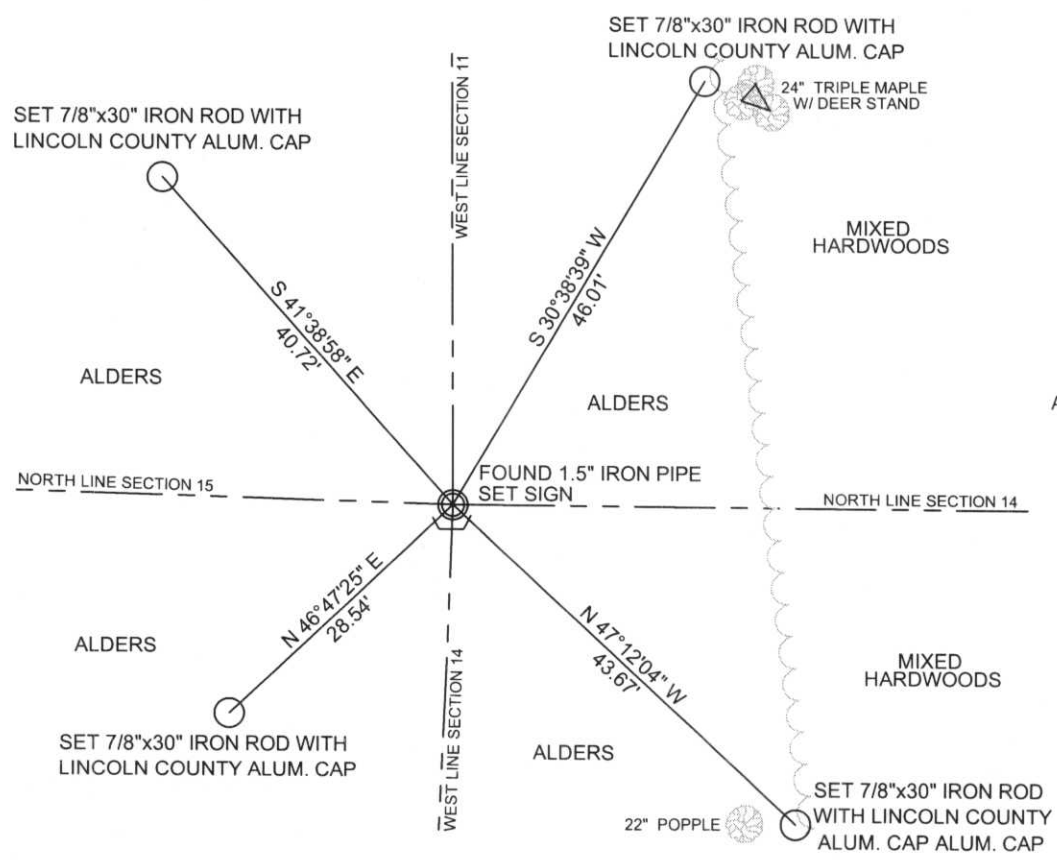
**CWE, Inc.**  
5707 SCHOFIELD AVE.  
WESTON, WISCONSIN  
54476  
  
PHONE: (715) 359-9400  
FAX: (715) 355-4199  
  
general@cwengineers.com  
www.cwengineers.com

RECEIVED BY LINCOLN COUNTY  
SURVEYOR THIS 2ND DAY  
OF November 20 07  
*Troy Dall*  
COUNTY SURVEYOR

CERTIFIED CORRECT:  
*Ronald Jacobson*  
Ronald Jacobson RLS 2059-008  
Registered Land Surveyor  
DATE: November 2, 2007

## TIE SKETCH:

SHOW MINIMUM OF FOUR (4) HORIZONTAL TIE DISTANCES TO FIXED WITNESS MONUMENTS.  
DESCRIBE ALL MONUMENTS FOUND OR SET. ALL DISTANCES SHOWN IN US SURVEY FEET.



COORDINATES ARE REFERENCED TO LINCOLN COUNTY COORDINATE SYSTEM AS DEVELOPED BY THE WI. DEPARTMENT OF TRANSPORTATION AND ARE BASED ON GPS OBSERVATIONS TO CONTROL POINTS AS SUPPLIED BY LINCOLN COUNTY.

NOT TO SCALE  
BEARINGS REFERENCED TO LINCOLN COUNTY COORDINATE SYSTEM