

# LINCOLN COUNTY U.S. PUBLIC LAND TIE SHEET RECORD

SECTION 8  
TOWNSHIP 32N  
RANGE 4 E

83247  
NO.



LANDMARK

CORNER INDENTITY: BERNSTEN MONUMENT

LINCOLN COUNTY COORDINATE: N: 154014.018

E: 308710.302

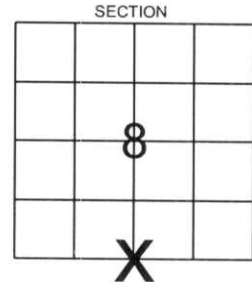
DATE OF SURVEY: August 15, 2007

SURVEY PARTY: Dahlvig/Nieds

**CORNING**

CITY, VILLAGE, TOWN

FOUND   
SET   
RE-SET   
RE-TIED

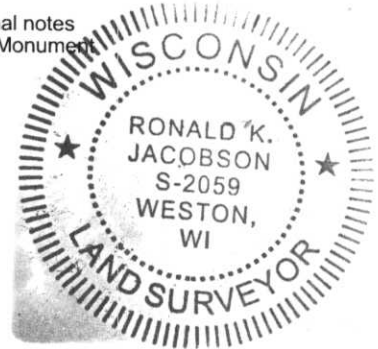


Description of monument found at this corner and if was accepted, state all evidence (material, testimonial, occupational, plats, records, other monuments) used as a basis for accepting. If not accepted or if nothing was found, state evidence used as basis for establishing location. If reestablished through lost corner proportionate methods, indicate all monuments, distances and directions used to establish.

## BASIS FOR MONUMENT LOCATION:

(DESCRIBE METHOD OF SURVEY AND CORNER AUTHENTICATION)

Found 1.0" iron pipe and wood post at corner. Blaze trees, property evidence, and comparison to original notes supports the iron pipe and wood post as the corner. Replaced iron pipe with Lincoln County Bernsten Monument



RECEIVED BY LINCOLN COUNTY  
SURVEYOR THIS 25<sup>TH</sup> DAY  
OF September 20 07  
*Tom Dahl*  
COUNTY SURVEYOR

CERTIFIED CORRECT:

*Ronald Jacobson*

Ronald Jacobson RLS 2059-008

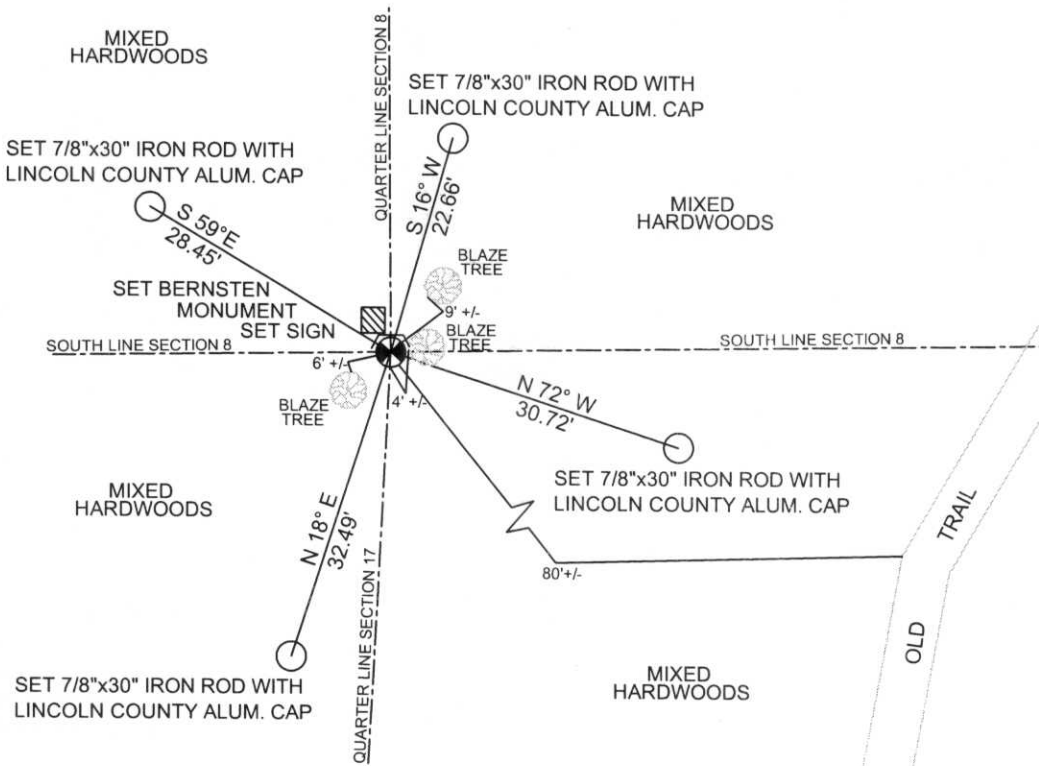
Registered Land Surveyor

DATE: September 20, 2007

COMPANY: Central Wisconsin Engineers & Architects  
5707 Schofield Ave.  
Weston, Wisconsin 54476  
(715) 359-9400

## TIE SKETCH:

SHOW MINIMUM OF FOUR (4) HORIZONTAL TIE DISTANCES TO FIXED WITNESS MONUMENTS.  
DESCRIBE ALL MONUMENTS FOUND OR SET. ALL DISTANCES SHOWN IN US SURVEY FEET.



COORDINATES ARE REFERENCED TO LINCOLN COUNTY COORDINATE SYSTEM AS DEVELOPED BY THE WI. DEPARTMENT OF TRANSPORTATION AND ARE BASED ON GPS OBSERVATIONS TO CONTROL POINTS AS SUPPLIED BY LINCOLN COUNTY.



NOT TO SCALE  
BEARINGS REFERENCED TO MAGNETIC NORTH











