

LINCOLN COUNTY U.S. PUBLIC LAND TIE SHEET RECORD

SECTION 4
TOWNSHIP 32N
RANGE 4 E

43248
NO.



LANDMARK

CORNER INDENTITY: 1.5" IRON PIPE

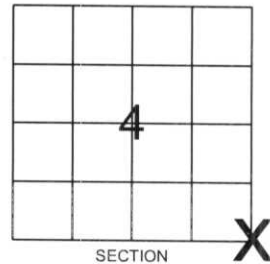
LINCOLN COUNTY COORDINATE: N: 159034.501
E: 316783.617

DATE OF SURVEY: October 8, 2007
SURVEY PARTY: Eron/Nieds

CORNING

CITY, VILLAGE, TOWN

- FOUND
- SET
- RE-SET
- RE-TIED



Description of monument found at this corner and if was accepted, state all evidence (material, testimonial, occupational, plats, records, other monuments) used as a basis for accepting. If not accepted or if nothing was found, state evidence used as basis for establishing location. If reestablished through lost corner proportionate methods, indicate all monuments, distances and directions used to establish.

BASIS FOR MONUMENT LOCATION:

(DESCRIBE METHOD OF SURVEY AND CORNER AUTHENTICATION)

Found 1.5" iron pipe at corner. Property evidence and comparison to the original notes supports the 1.5" iron pipe as corner.



CWE, Inc.

5707 SCHOFIELD AVE.
WESTON, WISCONSIN
54476

PHONE: (715) 359-9400
FAX: (715) 355-4199

general@cwengineers.com
www.cwengineers.com

RECEIVED BY LINCOLN COUNTY
SURVEYOR THIS 22ND DAY
OF October 20, 07
Ronald Jacobson
COUNTY SURVEYOR

CERTIFIED CORRECT:

Ronald Jacobson

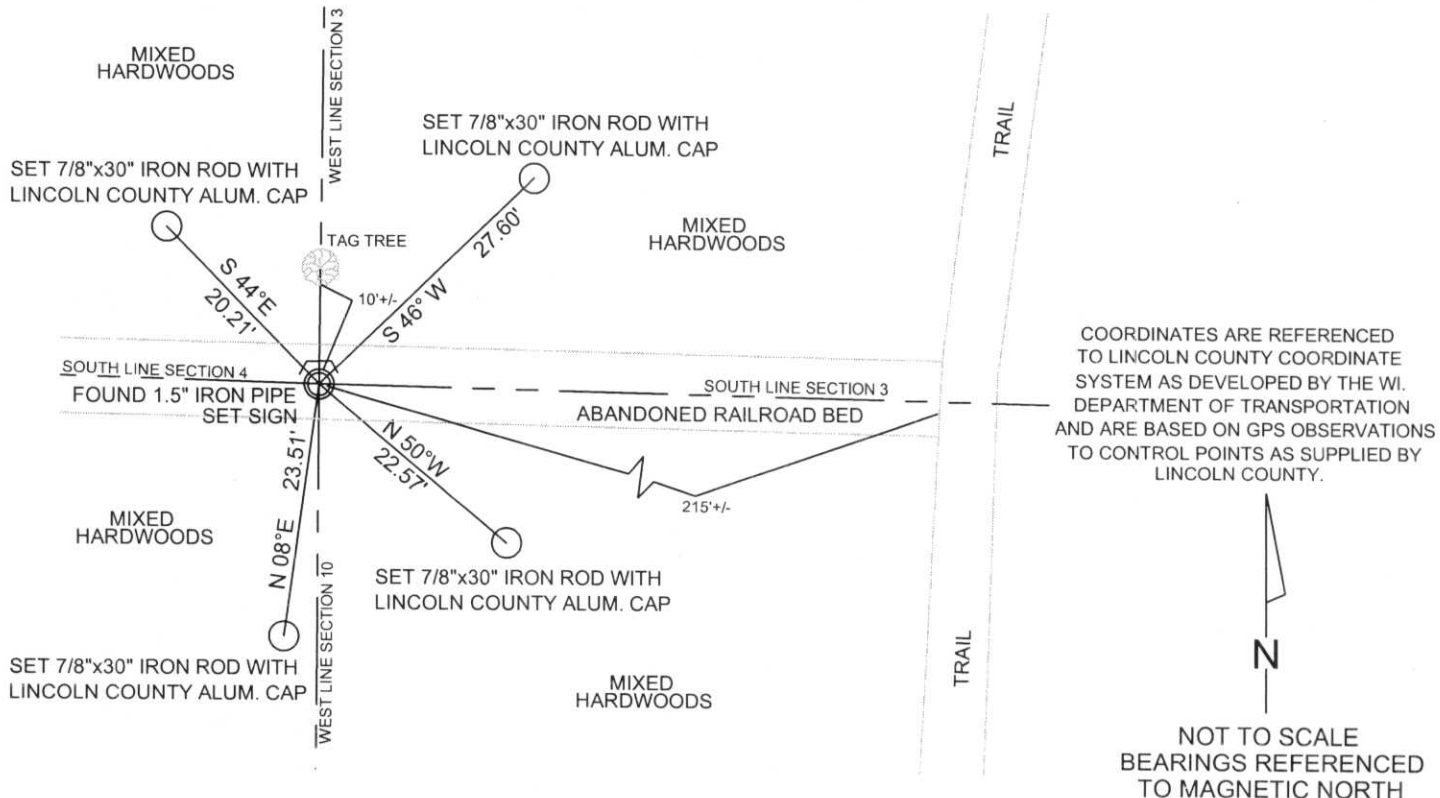
Ronald Jacobson RLS 2059-008

Registered Land Surveyor

DATE: October 19, 2007

TIE SKETCH:

SHOW MINIMUM OF FOUR (4) HORIZONTAL TIE DISTANCES TO FIXED WITNESS MONUMENTS.
DESCRIBE ALL MONUMENTS FOUND OR SET. ALL DISTANCES SHOWN IN US SURVEY FEET.











PLEASE
DO NOT
DISTURB
NEARBY
SMALL
RESEARCH
TREE



PLEASE
DO NOT
DISTURB
NEARBY

S M
U A
R