

LINCOLN COUNTY U.S. PUBLIC LAND TIE SHEET RECORD

SECTION 1
TOWNSHIP 32N
RANGE 4 E

13247
NO.

LANDMARK

CORNING
CITY, VILLAGE, TOWN

CORNER INDENTITY: BERNSTEN MONUMENT

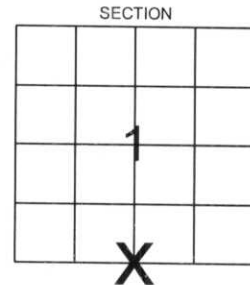
LINCOLN COUNTY COORDINATE: N: 158771.0909

E: 330284.1609

DATE OF SURVEY: JUNE 27, 2007

SURVEY PARTY: Nieds/Dahlvig

FOUND
SET
RE-SET
RE-TIED



Description of monument found at this corner and if was accepted, state all evidence (material, testimonial, occupational, plats, records, other monuments) used as a basis for accepting. If not accepted or if nothing was found, state evidence used as basis for establishing location. If reestablished through lost corner proportionate methods, indicate all monuments, distances and directions used to establish.

BASIS FOR MONUMENT LOCATION:

(DESCRIBE METHOD OF SURVEY AND CORNER AUTHENTICATION)

No evidence remained of the corner.
Corner was set by single proportionate measurement.



CERTIFIED CORRECT:

Ronald K. Jacobson

Ronald Jacobson RLS 2059-008

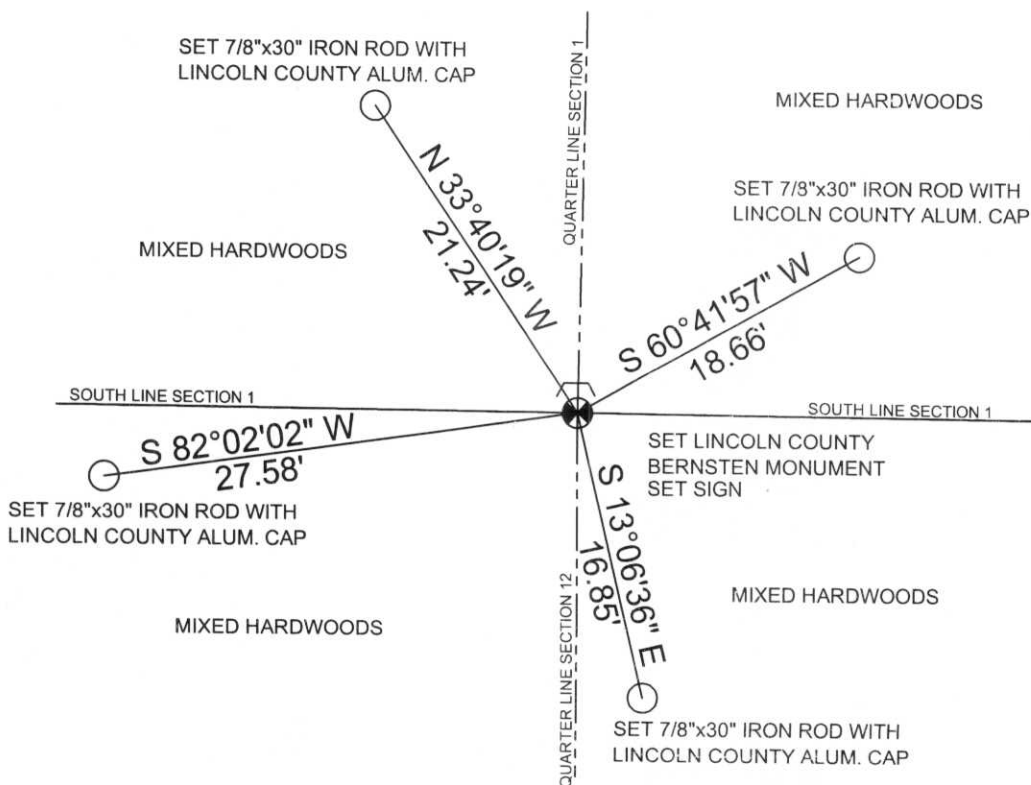
Registered Land Surveyor

DATE: June 29, 2007

COMPANY: Central Wisconsin Engineers & Architects
5707 Schofield Ave.
Weston, Wisconsin 54476
(715) 359-9400

TIE SKETCH:

SHOW MINIMUM OF FOUR (4) HORIZONTAL TIE DISTANCES TO FIXED WITNESS MONUMENTS.
DESCRIBE ALL MONUMENTS FOUND OR SET. ALL DISTANCES SHOWN IN US SURVEY FEET.



RECEIVED BY LINCOLN COUNTY
SURVEYOR THIS 29TH DAY
OF June 20 07
Tony Dahlvig
COUNTY SURVEYOR

COORDINATES ARE REFERENCED TO LINCOLN COUNTY COORDINATE SYSTEM AS DEVELOPED BY THE WI. DEPARTMENT OF TRANSPORTATION AND ARE BASED ON GPS OBSERVATIONS TO CONTROL POINTS AS SUPPLIED BY LINCOLN COUNTY.

NOT TO SCALE
BEARINGS REFERENCED TO THE LINCOLN COUNTY COORDINATE SYSTEM

E-23

IF THE
LOCATION
OF THE NEARBY
MARKER IS
ENDANGERED
PLEASE CONTACT
THE COUNTY
SURVEYORS
OFFICE





PLEASE
DO NOT
DISTURB
NEARBY



PLEASE
DO NOT
DISTURB
NEARBY



