

# LINCOLN COUNTY U.S. PUBLIC LAND TIE SHEET RECORD

SECTION 19  
TOWNSHIP 32N  
RANGE 4 E

193244  
NO.

LANDMARK

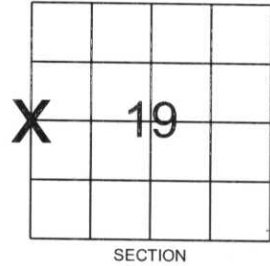
**CORNING**  
CITY, VILLAGE, TOWN

CORNER INDENTITY: BERNSTEN MONUMENT

LINCOLN COUNTY COORDINATE: N: 146050.2860  
E: 300454.9500

DATE OF SURVEY: February 20, 2007  
SURVEY PARTY: Rutzen/Broton

FOUND   
SET   
RE-SET   
RE-TIED



Description of monument found at this corner and if was accepted, state all evidence (material, testimonial, occupational, plats, records, other monuments) used as a basis for accepting. If not accepted or if nothing was found, state evidence used as basis for establishing location. If reestablished through lost corner proportionate methods, indicate all monuments, distances and directions used to establish.

## BASIS FOR MONUMENT LOCATION:

(DESCRIBE METHOD OF SURVEY AND CORNER AUTHENTICATION)

No evidence found of corner location.  
Corner was set by single proportionate measurement.



CERTIFIED CORRECT:

*Ronald K. Jacobson*

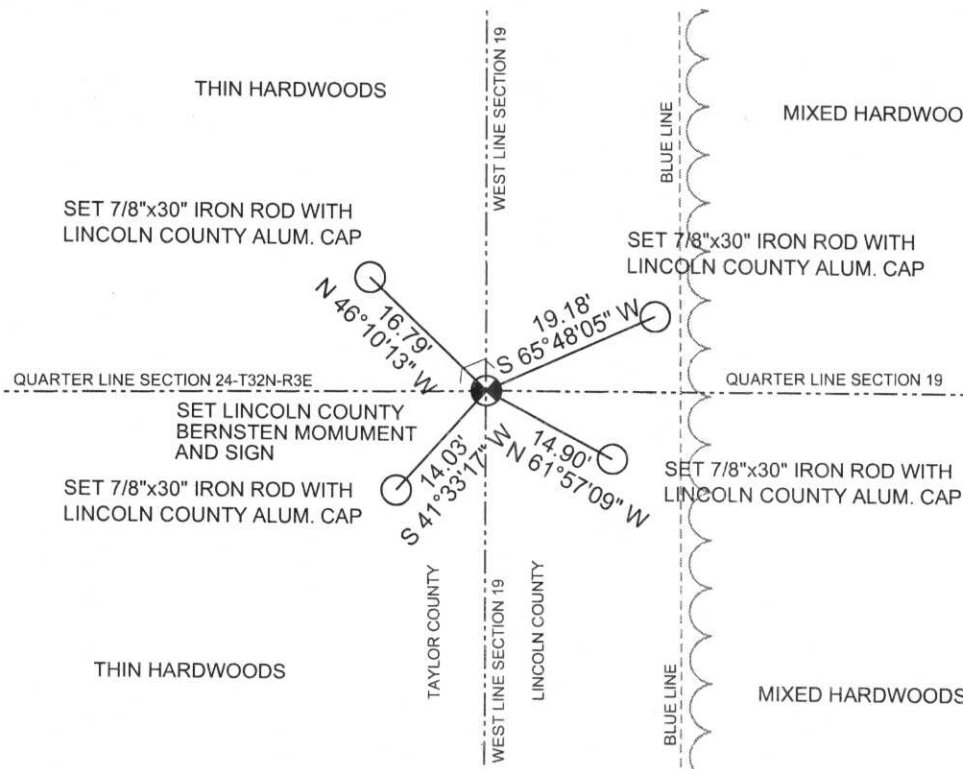
Ronald Jacobson RLS 2059-008  
Registered Land Surveyor

DATE: February 23, 2007

COMPANY: Central Wisconsin Engineers & Architects  
5707 Schofield Ave.  
Weston, Wisconsin 54476  
(715) 359-9400

## TIE SKETCH:

SHOW MINIMUM OF FOUR (4) HORIZONTAL TIE DISTANCES TO FIXED WITNESS MONUMENTS.  
DESCRIBE ALL MONUMENTS FOUND OR SET. ALL DISTANCES SHOWN IN US SURVEY FEET.



RECEIVED BY LINCOLN COUNTY  
SURVEYOR THIS 28<sup>TH</sup> DAY  
OF February 20 07  
*Tony Dalk*  
COUNTY SURVEYOR

COORDINATES ARE REFERENCED TO LINCOLN COUNTY COORDINATE SYSTEM AS DEVELOPED BY THE WI. DEPARTMENT OF TRANSPORTATION AND ARE BASED ON GPS OBSERVATIONS TO CONTROL POINTS AS SUPPLIED BY LINCOLN COUNTY.

NOT TO SCALE  
BEARINGS REFERENCED TO LINCOLN COUNTY COORDINATE SYSTEM

1-0



LINCOLN COUNTY MISSOURI  
FOR SURVEY PURPOSES  
1892









PLEASE  
DO NOT

SQUARR