

**LINCOLN COUNTY U.S. PUBLIC LAND
SURVEY MONUMENT LOCATION RECORD**

Corner Location: South 1/4 Corner of Section 34
 Monument Type: Found MAG Nail
 County Coordinate: N 260,416.099 E 320,612.967
 Date of Survey: 4/3/2019 Datum: WSCRs Marathon NAD 83 (2011)
 Survey Party: Emily K. Pierce
 Field Book: Looseleaf Hewitt Page Number: Y15

Found
 Set
 Re-set
 Re-Tied

Section 34
 Township 31N
 Range 8E
Pine River
~~City, Village, Town~~

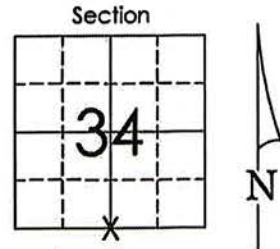
Y15

BASIS FOR MONUMENT LOCATION:

(Describe method of survey and corner authentication)

10/27/2005 Keith Walkowski S-2717 dug for South Quarter Corner in with County Gradall. Found no evidence of Corner or occupation. Re-established corner at centerline of County Road "X" and equal distance from the Southeast and Southwest Corners of Section 34 and set a Berntsen monument. This location fit original chainage to East within 3 feet. Perpetuated monument with accessories.

4/03/2019 I found a MAG Nail in surface of asphalt. Position of Nail checked in relation to found accessories that were in good condition and accepted as the same location as 2005. Set channel post near tie to NW as fence was removed and re-measured as shown below.



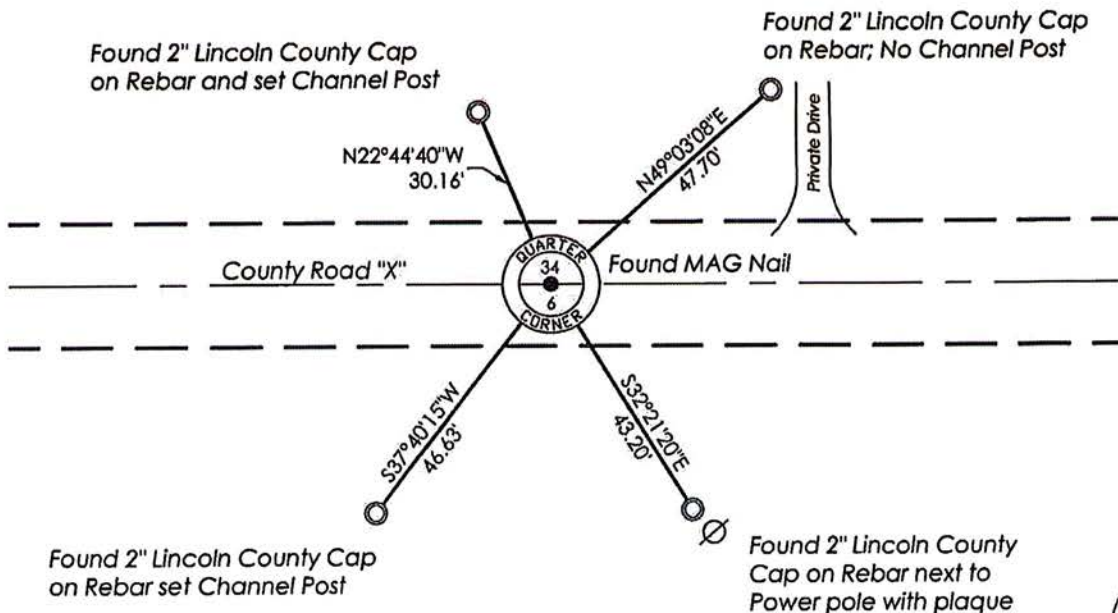
Emily K. Pierce

Emily K. Pierce, RLS-2728

Date: 4/30/2019

RECEIVED BY LINCOLN COUNTY
 SURVEYOR THIS 30TH DAY
 OF April 20 19
Tony Dahl
 COUNTY SURVEYOR

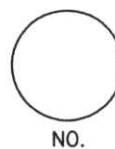
TIE SKETCH: Show minimum of four (4) horizontal tie distances to fixed witness monuments. Describe all monuments found or set.



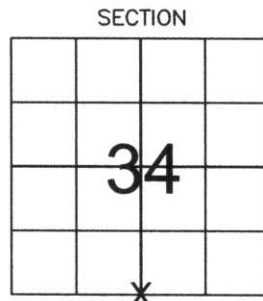
Y15

LINCOLN COUNTY U.S. PUBLIC LAND SURVEY MONUMENT LOCATION RECORD

CORNER NUMBER 343187
 SECTION 34
 TOWNSHIP 31 NORTH
 RANGE 8 EAST
 PINE RIVER
 CITY, VILLAGE, TOWN



LANDMARK BENCHMARK _____
 CORNER IDENTITY: _____ SOUTH 1/4 CORNER
 FOUND SET
 RESET
 RE-TIED
 LINCOLN COUNTY COORDINATE: N: 100363.64
 E: 447147.41
 ELEVATION-(FEET): _____ DATUM: _____
 WEATHER: PARTLY CLOUDY
 DATE OF SURVEY: 10-27-05 TEMPERATURE: 60 °F
 SURVEY PARTY: NATHAN WINCENTSEN, KEITH WALKOWSKI



LOCATION (Indicated By X)



BASIS FOR MONUMENT LOCATION:

(DESCRIBE METHOD OF SURVEY AND CORNER AUTHENTICATION)

DUG FOR SOUTH 1/4 CORNER WITH COUNTY GRADALL, FOUND NO EVIDENCE OF CORNER OR OCCUPATION. REESTABLISHED SOUTH 1/4 CORNER AT CENTERLINE OF COUNTY ROAD "X" AND PROPORTIONED DISTANCE BETWEEN THE SOUTHEAST AND SOUTHWEST CORNERS OF SECTION 34. THIS LOCATION MATCHES ORIGINAL CHAINAGE TO THE EAST WITHIN 3 FEET. PERPETUATED CORNER AS SHOWN BELOW.

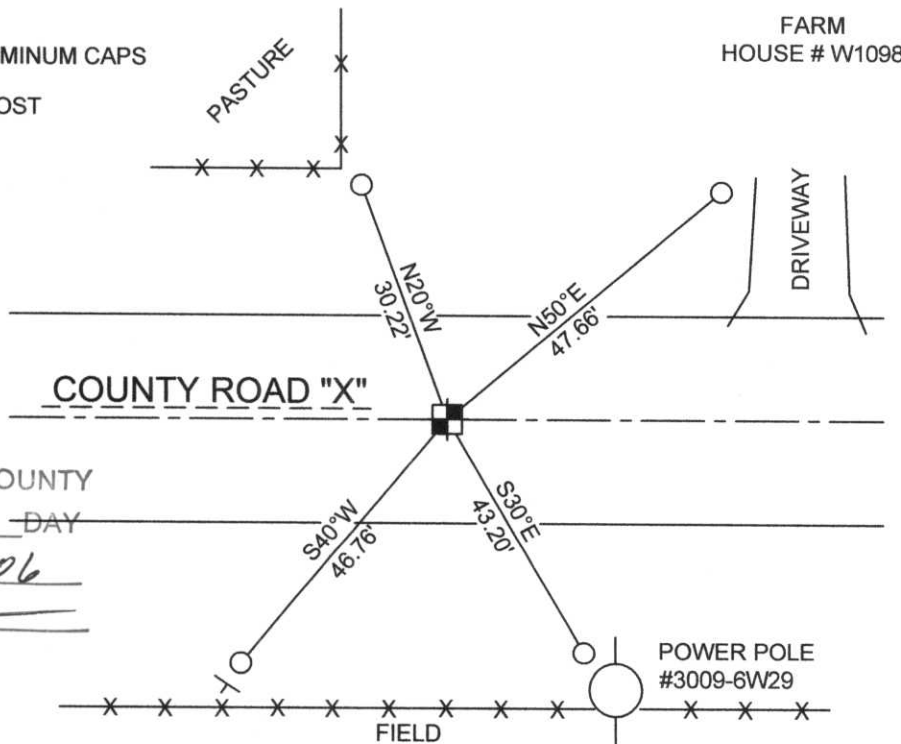
FIELD BOOK NO. PINE RIVER PAGE NO. 8
 COMPANY RIVERSIDE LAND SURVEYING LLC

CERTIFIED CORRECT:
Keith J. Walkowski
 KEITH J. WALKOWSKI
 Registered Land Surveyor
 DATE: Jan. 4TH, 2006

TIE SKETCH:

SHOW MINIMUM OF FOUR (4) HORIZONTAL TIE DISTANCES TO FIXED WITNESS MONUMENTS. DESCRIBE ALL MONUMENTS FOUND OR SET. CORRECT ALL DISTANCES SHOWN TO STANDARD TEMPERATURE OF 68° F.

- SET BERNSTEN
 - SET 3/4" REBAR WITH ALUMINUM CAPS
 - VINYL SURVEY MARKER POST
- NOTE**
 - ALL BEARINGS ARE FROM A HAND HELD MAGNETIC COMPASS
 - THIS DRAWING IS NOT TO SCALE



RECEIVED BY LINCOLN COUNTY SURVEYOR THIS 6TH DAY OF January 20 06
Tony Dell
 COUNTY SURVEYOR

Y-15