

LINCOLN COUNTY U.S. PUBLIC LAND SURVEY MONUMENT LOCATION RECORD

CORNER NUMBER 333187

SECTION 33

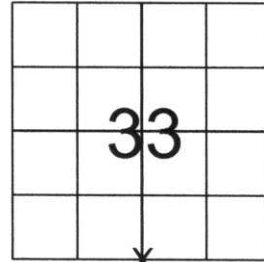
TOWNSHIP 31 NORTH

RANGE 8 EAST

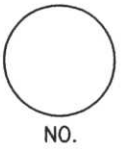
PINE RIVER

CITY, VILLAGE, TOWN

SECTION



LOCATION
(Indicated By X)



LANDMARK BENCHMARK _____ FOUND SET
CORNER IDENTITY: SOUTH 1/4 CORNER RESET
RE-TIED

LINCOLN COUNTY COORDINATE: N: 100388.92
E: 441853.35

ELEVATION-(FEET): _____ DATUM: _____

WEATHER: PARTLY CLOUDY

DATE OF SURVEY: 10-24-05 TEMPERATURE: 50 °F

SURVEY PARTY: NATHAN WINCENTSEN, KEITH WALKOWSKI

BASIS FOR MONUMENT LOCATION:
(DESCRIBE METHOD OF SURVEY AND CORNER AUTHENTICATION)

DUG FOR CORNER WITH COUNTY GRADALL AT CENTERLINE OF COUNTY LINE ROAD. FOUND GRANITE STONE TIPPED 2.5 FEET BELOW ROAD SURFACE, STRAIGHTENED STONE AND ACCEPTED AS CORNER LOCATION. SET 1" IRON PIPE ALONG NORTH SIDE OF STONE, AND PERPETUATED AS SHOWN BELOW.



CERTIFIED CORRECT:
Keith J. Walkowski
KEITH J. WALKOWSKI
Registered Land Surveyor
DATE: Jan. 3RD, 2006

FIELD BOOK NO. PINE RIVER PAGE NO. 9

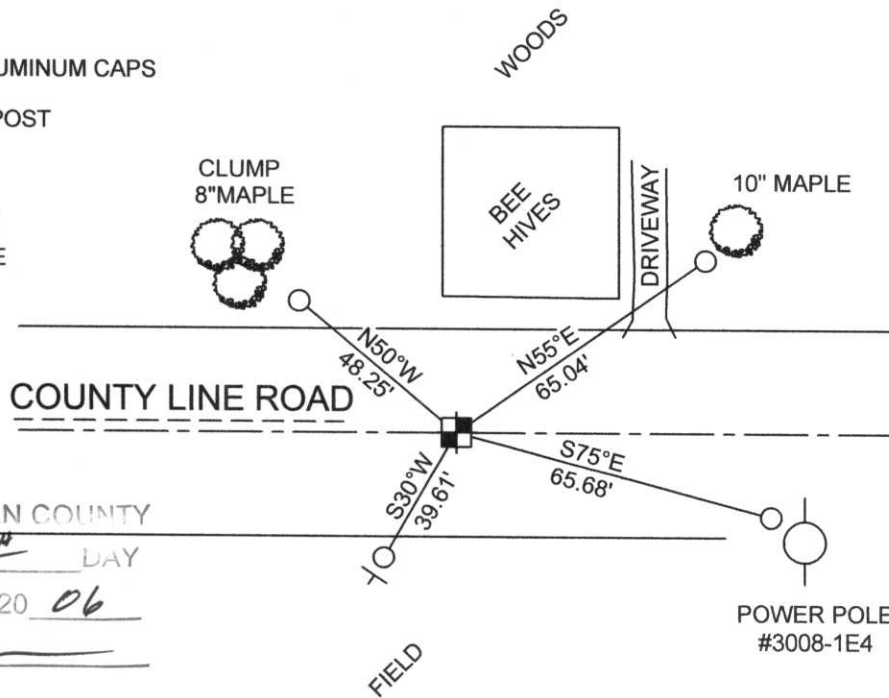
COMPANY RIVERSIDE LAND SURVEYING LLC

TIE SKETCH: SHOW MINIMUM OF FOUR (4) HORIZONTAL TIE DISTANCES TO FIXED WITNESS MONUMENTS. DESCRIBE ALL MONUMENTS FOUND OR SET. CORRECT ALL DISTANCES SHOWN TO STANDARD TEMPERATURE OF 68° F.

- FOUND GRANITE STONE
- SET 3/4" REBAR WITH ALUMINUM CAPS
- VINYL SURVEY MARKER POST

NOTE

- ALL BEARINGS ARE FROM A HAND HELD MAGNETIC COMPASS
- THIS DRAWING IS NOT TO SCALE



RECEIVED BY LINCOLN COUNTY SURVEYOR THIS 6TH DAY OF January 20 06
Tommy Decker
COUNTY SURVEYOR

11-1

333187

