

CERTIFIED LAND CORNER RESTORATION

Index No. S-5

State of Wisconsin }  
County of Lincoln } ss.

History of original corner establishment:

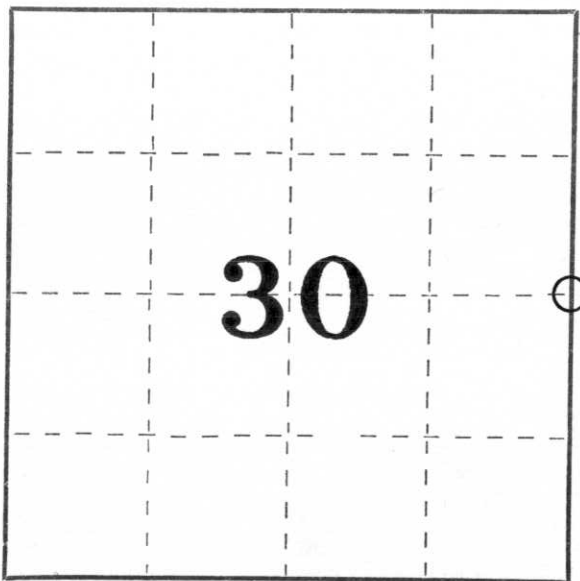
Wood post set by original government surveyor.

I, Sheridan D. Schwark, do hereby certify that on the 6th day of January, 1981, I found evidence of the E 1/4 corner of Section 30 Township 31, North, Range 8 East, Fourth, Principal Meridian, as described hereon; and that from this evidence I established a new monument and accessories as described hereon to perpetuate the original location of this corner.

Description of corner evidence found:

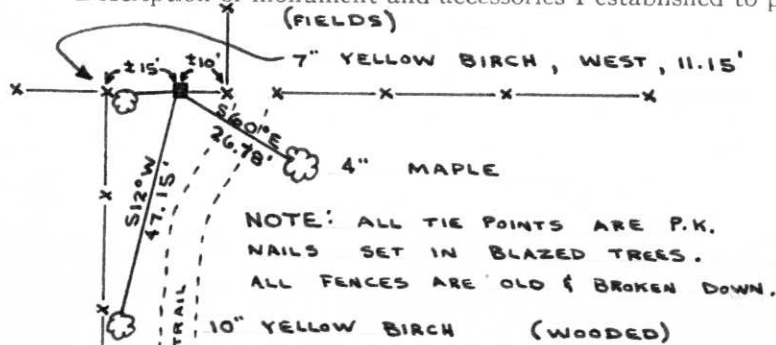
We found a 6" x 6" red granite stone monument heaved up above grade and tipped southerly. We straightened and reset the stone in its location. Walter Behn, local resident, confirmed that the stone is in its correct location.

Resident witnesses:



○ = Corner monument restored.

Description of monument and accessories I established to perpetuate the original location of this corner.



NOTE: ALL TIE POINTS ARE P.K.  
NAILS SET IN BLAZED TREES.  
ALL FENCES ARE OLD & BROKEN DOWN.



Dated at Merrill, Wis., this 13th day of January, 1981.

Signature Sheridan D. Schwark Title Registered Land Surveyor Registration No. S-1205  
(County Surveyor, Registered Land Surveyor, or other duly authorized official)

Office of Register of Deeds, County of \_\_\_\_\_, I hereby certify that the within instrument was filed in this office for record on the \_\_\_\_\_ day of \_\_\_\_\_, 19\_\_\_\_ at \_\_\_\_\_ o'clock \_\_\_\_\_ M.

(Register of Deeds)

By \_\_\_\_\_ Deputy