

LINCOLN COUNTY U.S. PUBLIC LAND SURVEY MONUMENT LOCATION RECORD

CORNER NUMBER 283184

SECTION 28

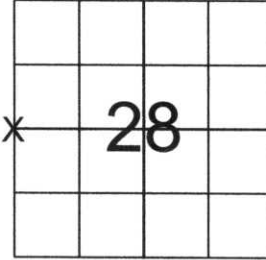
TOWNSHIP 31 NORTH

RANGE 8 EAST

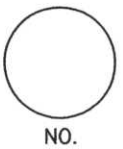
PINE RIVER

CITY, VILLAGE, TOWN

SECTION



LOCATION (Indicated By X)



LANDMARK BENCHMARK _____ FOUND SET
 CORNER IDENTITY: WEST 1/4 CORNER RESET
 RE-TIED

LINCOLN COUNTY COORDINATE: N: 108313.37
 E: 439172.87

ELEVATION-(FEET): _____ DATUM: _____

WEATHER: PARTLY CLOUDY

DATE OF SURVEY: 10-17-05 TEMPERATURE: 45 °F

SURVEY PARTY: NATHAN WINCENTSEN, KEITH WALKOWSKI

BASIS FOR MONUMENT LOCATION:
 (DESCRIBE METHOD OF SURVEY AND CORNER AUTHENTICATION)

DUG FOR WEST 1/4 CORNER WITH COUNTY GRADALL, FOUND A GRANITE STONE 1.7 FEET BELOW ROAD GRADE. ACCEPTED STONE AS CORNER LOCATION AND SET A 1" IRON PIPE ON NORTH SIDE OF STONE. PERPETUATED CORNER AS SHOWN BELOW.



CERTIFIED CORRECT:
Keith J. Walkowski
KEITH J. WALKOWSKI
 Registered Land Surveyor
 DATE: Jan. 3RD, 2006

FIELD BOOK NO. PINE RIVER PAGE NO. 30

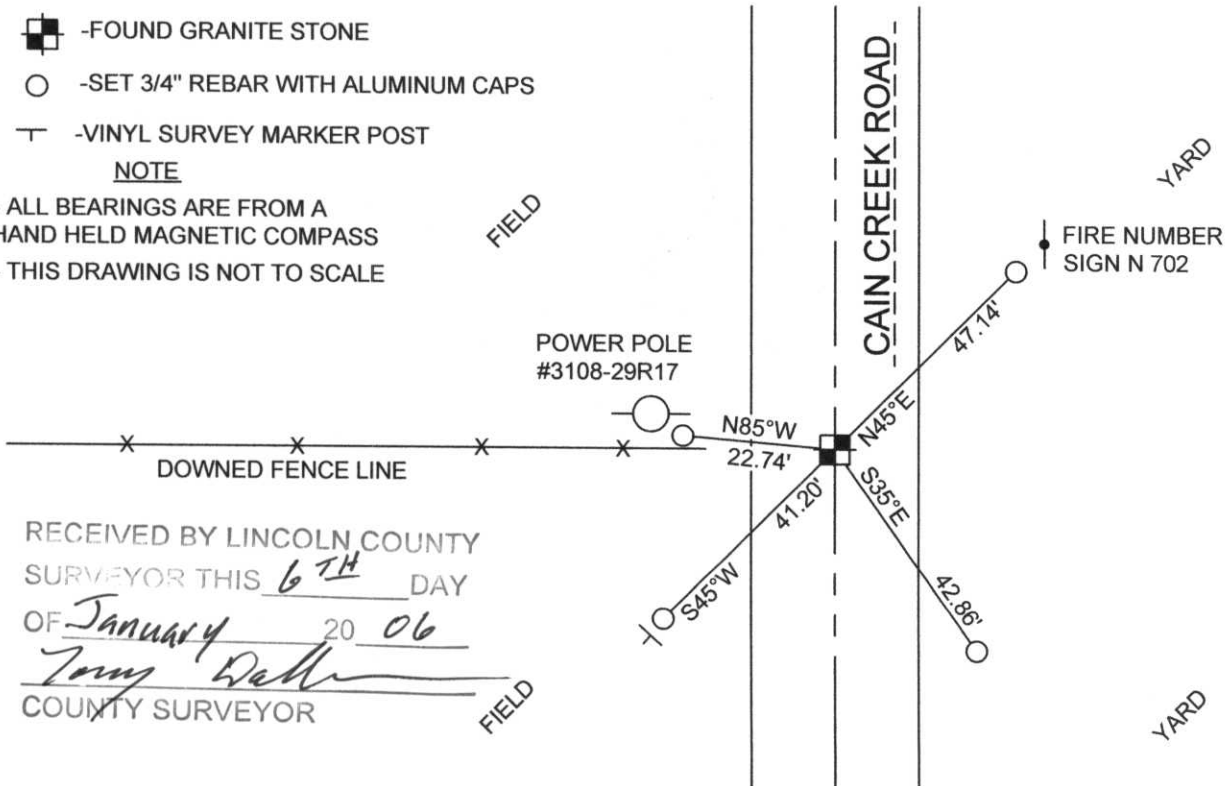
COMPANY RIVERSIDE LAND SURVEYING LLC

TIE SKETCH: SHOW MINIMUM OF FOUR (4) HORIZONTAL TIE DISTANCES TO FIXED WITNESS MONUMENTS. DESCRIBE ALL MONUMENTS FOUND OR SET. CORRECT ALL DISTANCES SHOWN TO STANDARD TEMPERATURE OF 68° F.

- FOUND GRANITE STONE
- SET 3/4" REBAR WITH ALUMINUM CAPS
- VINYL SURVEY MARKER POST

NOTE

- ALL BEARINGS ARE FROM A HAND HELD MAGNETIC COMPASS
- THIS DRAWING IS NOT TO SCALE



RECEIVED BY LINCOLN COUNTY SURVEYOR THIS 6TH DAY OF January 20 06
Tommy Delle
 COUNTY SURVEYOR

283184

