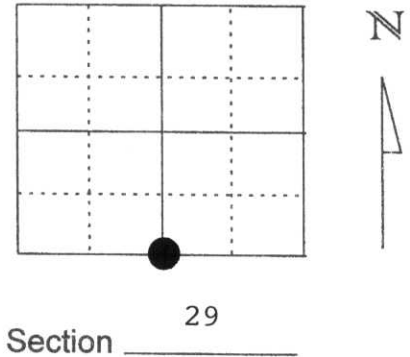


# U.S. PUBLIC LAND SURVEY MONUMENT RECORD

Note: This form is intended and designed to fulfill all requirements of Wisconsin Administrative Code, Chapter A-E 5.02, U.S. Public Land Survey Monument Record (3) (a) (b) (c) (d) (e) (f) (g) (h) (l). An additional sheet may be added if necessary to conform with said requirements.

(a) Corner location: Township 31 North  
 Range 8 East  
 Town/City/Village TN. PINE RIVER  
 County Lincoln



(b) (f) (g) (h) Description of monument found at this corner and if it was accepted, state all evidence (material, testimonial, occupational, plats, records, other monuments) used as a basis for accepting. If not accepted or if nothing was found, state evidence used as basis for establishing location. If reestablished through lost corner proportionate methods, indicate all monuments, distances and directions used to establish.

1852 WOOD POST SET

YEAR UNKNOWN GRANITE STONE SET

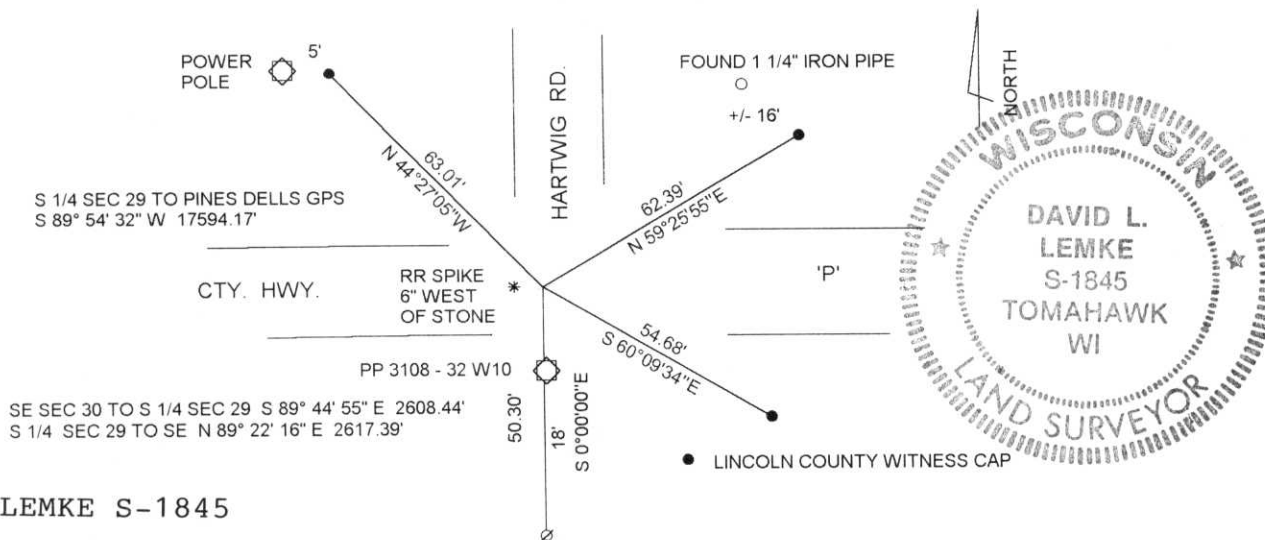
MARCH 1983 LA VERNE MOSHER SET RR SPIKE FOR CORNER LOCATED BY TIES ESTABLISHED BY LINCOLN CTY. HWY. DEPT. PROJECT S0569(4) SHEET 5. RE-ESTABLISHED 6 TIES TO THE CORNER POSITION. TIE SHEET FILED 3/16/83.

MAY 1997 EXCAVATED AND FOUND GRANITE STONE 14" BELOW PAVEMENT. C/L C/L HARTWIG RD. & HWY. 'P'. SET 3/4" REBAR NORTH SIDE OF STONE SET 3 NEW LINCOLN COUNTY WITNESS CAPS AND TIED INTO EXISTING 1 1/4" IRON BAR SET BY HWY. DEPT. RR SPIKE SET PER HWY. DEPT. NOTES 6" WEST OF STONE.

MAY 1998 RETIED CORNER POSITION FOR C/L TRAVERSE

(c) (d) (e) Plan view of corner with ties to at least 4 witness monuments. If in disagreement with previously established corner, show the distances between the two corners and also indicate the ties to the disputed corner.

RECEIVED AT LINCOLN COUNTY COURTHOUSE THIS 3rd DAY OF June 1998 OF David L. Lemke TAX DESCRIPTION OFFICE



DAVID L. LEMKE S-1845

(l) I, \_\_\_\_\_ (type or print name) certify that the corner location on this record was determined by me or under my direction and control and that this U.S. Public Land Survey Monument Record is correct and complete to the best of my knowledge and belief.

*David L. Lemke*  
 Signature

JUN. 03 1998

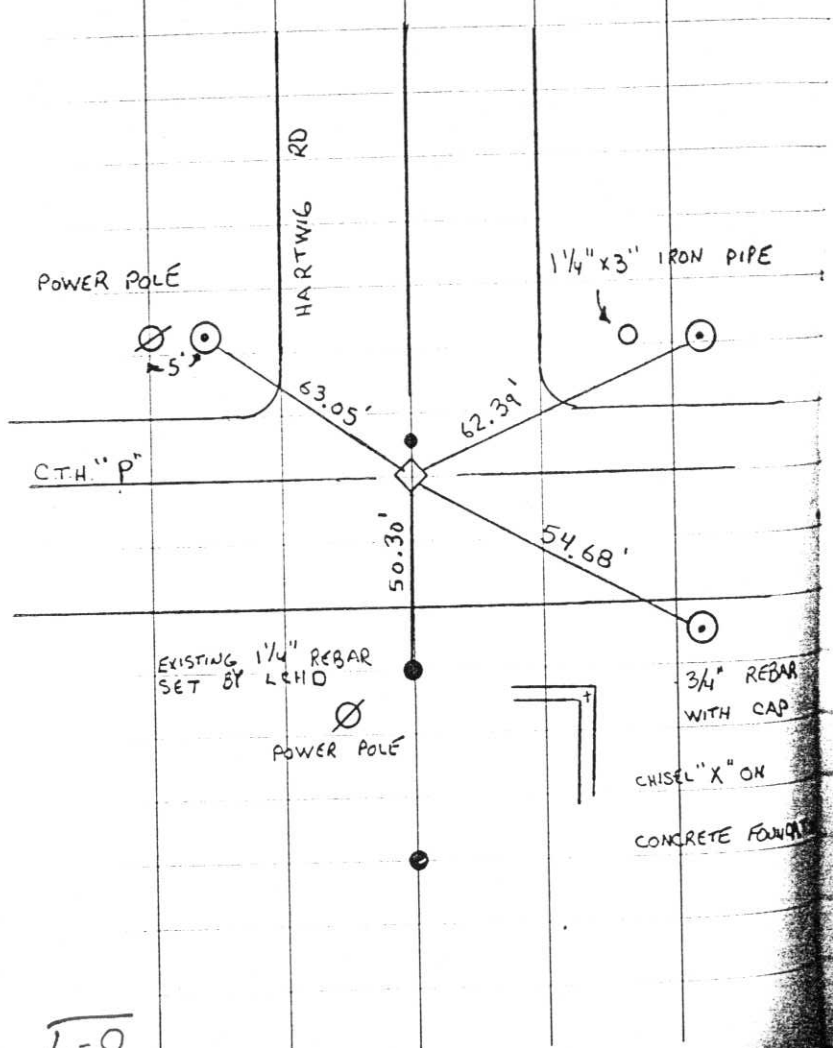
Date

Index No. C-7

TOWN OF PINE RIVER

T31N R8E

SECTION 32 N<sup>1</sup>/<sub>4</sub>



FOUND GRANITE STONE 14" UNDER  
THE BLACKTOP

SET 3/4" REBAR ON NORTH  
SIDE OF MONUMENT.

Received  
3-13-98

RR SPIKE WAS 6" TO THE  
WEST OF THE STONE.

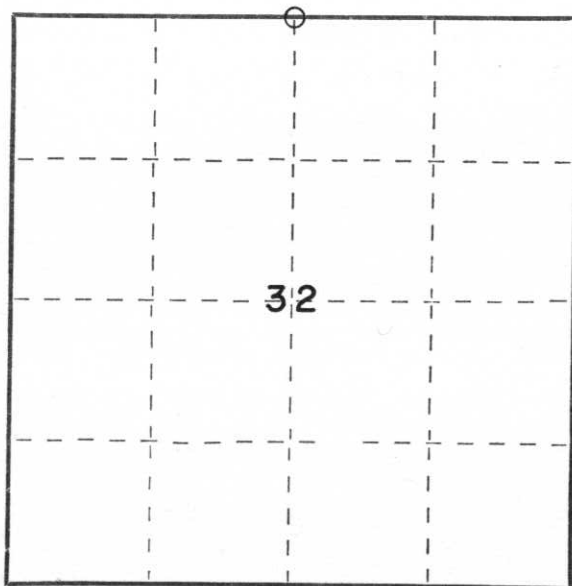
CERTIFIED LAND CORNER RESTORATION

Index No. 0-7

State of Wisconsin }  
County of LINCOLN } ss.

I LA VERNE H. MOSHER, do hereby certify that on the 3<sup>RD</sup> day of MARCH, 1983, I found evidence of the NORTH 1/4 corner of SECTION 32 Township 31, North, Range 8 EAST, Fourth, Principal Meridian, as described hereon; and that from this evidence I established a new monument and accessories as described hereon to perpetuate the original location of this corner.

Resident witnesses:



○ = Corner monument restored.

History of original corner establishment:

Original government survey of Section 32, Township 31 North, Range 8 East, conducted in the year of 1852. The original government notes indicate wooden posts were placed to mark section and quarter corners. Date and origin of granite stones set in area are unknown, as the field notes, if any, were destroyed by fire.

Description of corner evidence found:

Corner point established from ties provided by Lincoln County Highway Department. These ties are shown on official R/W map of C.T.H. "P" (Project S0569(4), sheet number 5) and consist of two 1 1/4" iron rebars set South of cornerstone. Set a RR spike over cornerstone in blacktop roadway.

Description of monument and accessories I established to perpetuate the original location of this corner

Monument is a RR Spike set over cornerstone

- NE 58.12' Set 1 1/4"x30" Iron Pipe at top of bank
- SE 61.49' Chisel "X" atop concrete foundation at NE corner
- South (50.00' and 75.00') Existing 1 1/4" Rebars set by Lincoln Co. Hwy. Dept.
- SSW 31.90' Spike and disk on power pole
- NW 65.59' Spike and disk on power pole

(See sketch on reverse)

Dated at Schofield, Wis., this 16th day of March, 1983.

Signature LaVerne H. Mosher Title Reg. Land Surveyor Registration No. S-1188  
(County Surveyor, Registered Land Surveyor, or other duly authorized official)

Office of Register of Deeds, County of \_\_\_\_\_, I hereby certify that the within instrument was filed in this office for record on the \_\_\_\_\_ day of \_\_\_\_\_, 19\_\_\_\_ at \_\_\_\_\_ o'clock \_\_\_\_\_ M.

(Register of Deeds)

By \_\_\_\_\_ Deputy



RECEIVED AT LINCOLN COUNTY  
COURTHOUSE THIS 24th DAY  
OF March 19 83  
Pat Ariebe  
TAX DESCRIPTION OFFICE

