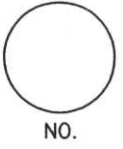


LINCOLN COUNTY U.S. PUBLIC LAND SURVEY MONUMENT LOCATION RECORD

CORNER NUMBER 333182
 SECTION 33
 TOWNSHIP 31 NORTH
 RANGE 8 EAST

PINE RIVER
 CITY, VILLAGE, TOWN



LANDMARK BENCHMARK _____
 CORNER IDENTITY: NORTH 1/4 CORNER

FOUND
 SET
 RESET
 RE-TIED

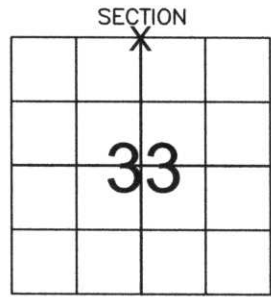
LINCOLN COUNTY COORDINATE: N: 105643.92
 E: 441807.48

ELEVATION-(FEET): _____ DATUM: _____

WEATHER: PARTLY CLOUDY

DATE OF SURVEY: 10-11-05 TEMPERATURE: 60 °F

SURVEY PARTY: NATHAN WINCENTSEN, KEITH WALKOWSKI



LOCATION (Indicated By X)



BASIS FOR MONUMENT LOCATION:

(DESCRIBE METHOD OF SURVEY AND CORNER AUTHENTICATION)

DUG FOR NORTH 1/4 CORNER WITH COUNTY GRADALL, FOUND GRANITE STONE TWO FEET BELOW ROAD SURFACE. ACCEPTED STONE AS CORNER LOCATION AND SET A 1" IRON PIPE ALONG THE NORTH SIDE OF STONE. PERPETUATED CORNER AS SHOWN BELOW.

CERTIFIED CORRECT:
Keith J. Walkowski
KEITH J. WALKOWSKI
 Registered Land Surveyor
 DATE: Jan 3RD, 2006

FIELD BOOK NO. PINE RIVER PAGE NO. 3
 COMPANY RIVERSIDE LAND SURVEYING LLC

TIE SKETCH:

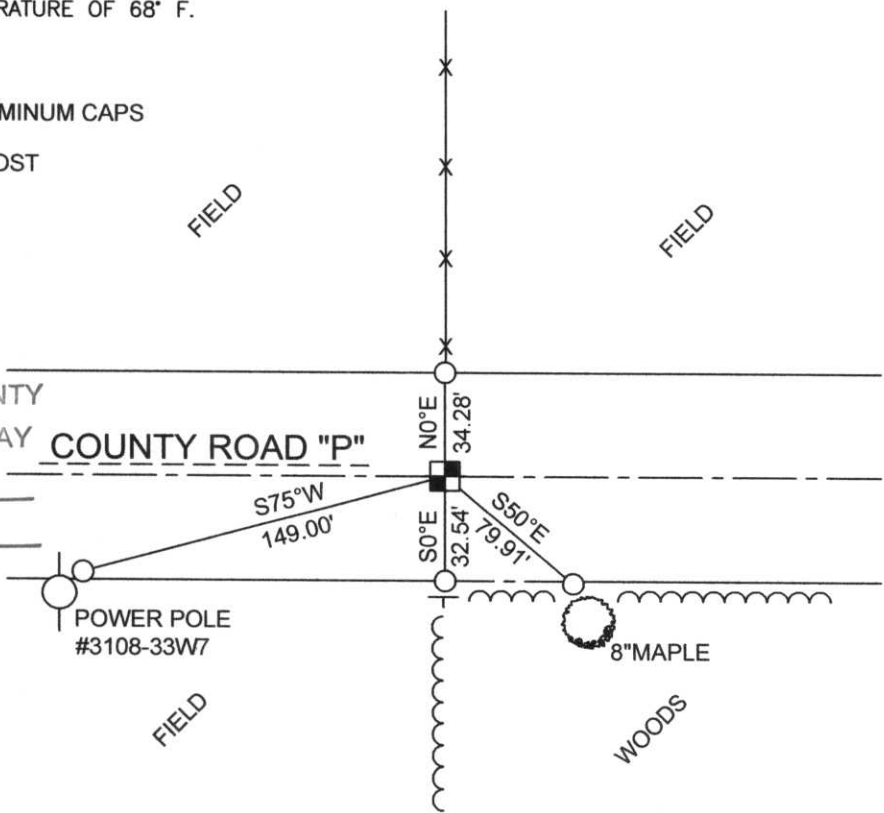
SHOW MINIMUM OF FOUR (4) HORIZONTAL TIE DISTANCES TO FIXED WITNESS MONUMENTS. DESCRIBE ALL MONUMENTS FOUND OR SET. CORRECT ALL DISTANCES SHOWN TO STANDARD TEMPERATURE OF 68° F.

- FOUND GRANITE STONE
- SET 3/4" REBAR WITH ALUMINUM CAPS
- VINYL SURVEY MARKER POST

NOTE

- ALL BEARINGS ARE FROM A HAND HELD MAGNETIC COMPASS
- THIS DRAWING IS NOT TO SCALE

RECEIVED BY LINCOLN COUNTY SURVEYOR THIS 6TH DAY COUNTY ROAD "P" OF January 20 06
Tony Walker
 COUNTY SURVEYOR



11-11



333182

Chicago Steel Tube