

# Attachment to Tie Sheet S-17 T31N, R8E

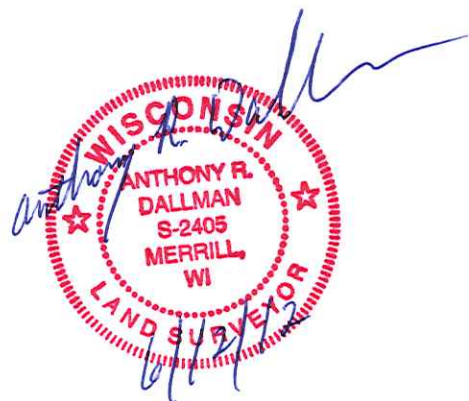
Visited this corner on May 31, 2012 and found 4 Reference Monuments in good condition and 2 Reference Monuments missing. Existing Reference Monument ties cross well and used that position to reset the 2 missing Reference Monuments, the Southeast and Northwest (37.99'), per the Tie Sheet. All of the small trees shown on the Tie Sheet are gone. Set a white "T" Post near the Southeast Reference Monument. Field Book #5 Page 141.

*Anthony Dallman* *6/12/12*

---

Anthony Dallman

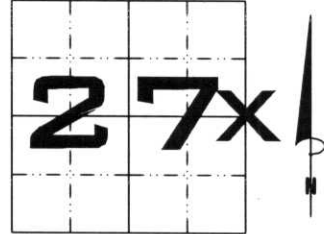
Lincoln County Surveyor



# U.S. PUBLIC LAND SURVEY MONUMENT RECORD

NOTE: THIS FORM IS INTENDED AND DESIGNED TO FULFILL ALL REQUIREMENTS OF WISCONSIN ADMINISTRATIVE CODE, CHAPTER A-E 7.08 U.S. PUBLIC LAND SURVEY MONUMENT RECORD (3) (a) (b) (c) (d) (e) (f) (g) (h) (i). AN ADDITIONAL SHEET MAY BE ADDED IF NECESSARY TO CONFORM WITH SAID REQUIREMENTS.

(a) CORNER LOCATION: TOWNSHIP 31 NORTH  
 RANGE 8 EAST/WEST  
 TOWN/~~CITY/VILLAGE~~ PINE RIVER  
 COUNTY LINCOLN



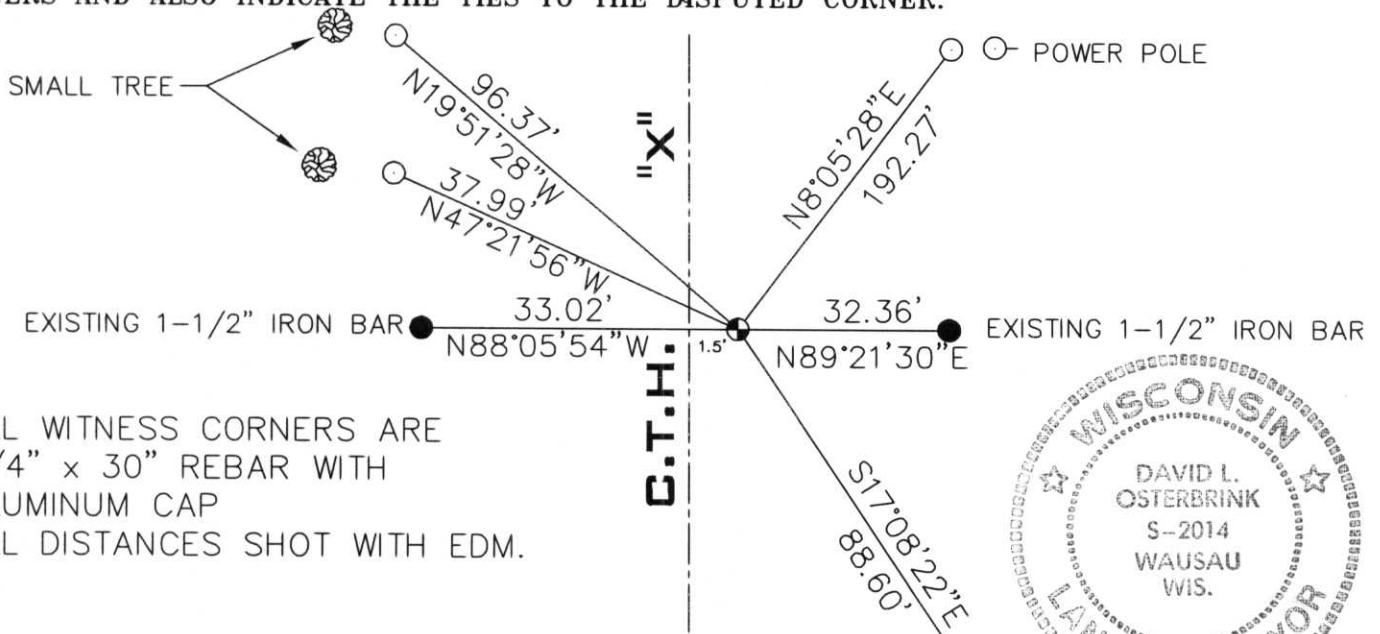
SECTION \_\_\_\_\_

(b) (f) (g) (h) DESCRIPTION OF MONUMENT FOUND AT THIS CORNER AND IF IT WAS ACCEPTED, STATE ALL EVIDENCE (MATERIAL, TESTIMONIAL, OCCUPATIONAL, PLATS, RECORDS, OTHER MONUMENTS) USED AS BASIS FOR ACCEPTING. IF NOT ACCEPTED OR IF NOTHING WAS FOUND, STATE EVIDENCE USED AS BASIS FOR ESTABLISHING LOCATION. IF REESTABLISHED THROUGH LOST CORNER PROPORTIONATE METHODS, INDICATE ALL MONUMENTS, DISTANCES AND DIRECTIONS USED TO ESTABLISH. INDICATE TYPE OF MONUMENT FOUND OR SET AND SIGN POST.

DUG DOWN 3', FOUND 1' x 6" x 6" GRANITE STONE LAYING DOWN. DUG DOWN ANOTHER FOOT, FOUND ANOTHER 1' x 6" x 6" PIECE OF STONE STANDING UP. DUG BY HAND, FOUND NO MORE PIECES. HELD AS CORNER. SET LINCOLN COUNTY BERNTSEN MONUMENT FOR CORNER. TIED OUT.

RECEIVED AT LINCOLN COUNTY  
 COURTHOUSE THIS 26th DAY  
 OF Sept 1997  
*Pat Pulte*  
 TAX DESCRIPTION OFFICE

(c) (d) (e) PLAN VIEW OF CORNER WITH TIES TO AT LEAST 4 WITNESS MONUMENTS. IF IN DISAGREEMENT WITH PREVIOUSLY ESTABLISHED CORNER, SHOW THE DISTANCES BETWEEN THE TWO CORNERS AND ALSO INDICATE THE TIES TO THE DISPUTED CORNER.



(i) I, DAVID L. OSTERBRINK  
 (TYPE OR PRINT NAME) CERTIFY THAT THE CORNER LOCATION ON THIS RECORD WAS DETERMINED BY ME OR UNDER MY DIRECTION AND CONTROL AND THAT THIS U.S. PUBLIC LAND SURVEY MONUMENT RECORD IS CORRECT AND COMPLETE TO THE BEST OF MY KNOWLEDGE AND BELIEF.

*David L. Osterbrink* 8-4-97  
 SIGNATURE DATE

SMALL TREE   
 CARSONITE SIGN

STAMP