

Attachment to Tie Sheet U-17 T31N, R8E

Visited this corner on May 29, 2012 and found 3 Reference Monuments. The 3 Reference Monuments cross well on an existing MAG Nail, used this position to reset the Northwest Reference Monument per Tie Sheet. "Arrow Sign" shown on Tie Sheet is gone. Field Book #5 Page 140.

Anthony Dallman *6/12/12*

Anthony Dallman

Lincoln County Surveyor



U-17

LINCOLN COUNTY U.S. PUBLIC LAND SURVEY MONUMENT LOCATION RECORD

CORNER NUMBER 343183

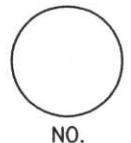
SECTION 34

TOWNSHIP 31 NORTH

RANGE 8 EAST

PINE RIVER

CITY, VILLAGE, TOWN



LANDMARK BENCHMARK _____
 CORNER IDENTITY: NORTHEAST CORNER

FOUND
 SET
 RESET
 RE-TIED

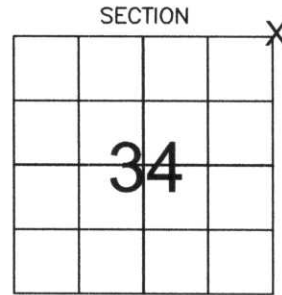
LINCOLN COUNTY COORDINATE: N: 105649.42
 E: 449768.41

ELEVATION-(FEET): _____ DATUM: _____

WEATHER: PARTLY CLOUDY

DATE OF SURVEY: 10-11-05 TEMPERATURE: 60 °F

SURVEY PARTY: NATHAN WINCENTSEN, KEITH WALKOWSKI



LOCATION (Indicated By X)



BASIS FOR MONUMENT LOCATION:
 (DESCRIBE METHOD OF SURVEY AND CORNER AUTHENTICATION)

DUG FOR NORTHEAST CORNER WITH COUNTY GRADALL, FOUND GRANITE STONE FOUR FEET BELOW ROAD SURFACE. ACCEPTED STONE AS CORNER LOCATION AND SET A 1" IRON PIPE ALONG THE NORTH SIDE. PERPETUATED CORNER LOCATION AS SHOWN BELOW.



CERTIFIED CORRECT:

Keith J. Walkowski
KEITH J. WALKOWSKI

Registered Land Surveyor

DATE: Jan. 3RD, 2006

FIELD BOOK NO. PINE RIVER PAGE NO. 6

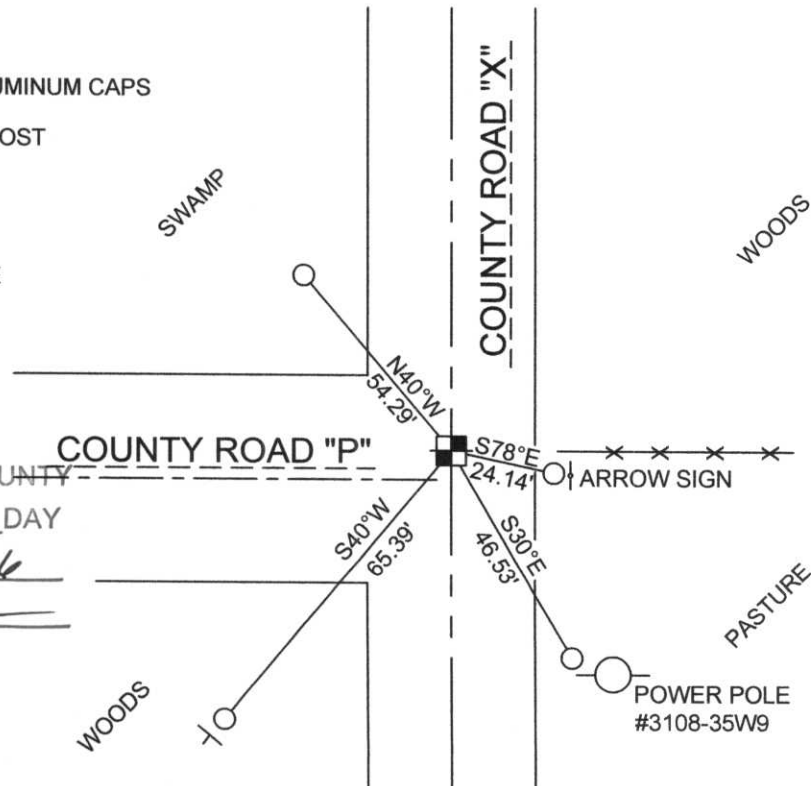
COMPANY RIVERSIDE LAND SURVEYING LLC

TIE SKETCH: SHOW MINIMUM OF FOUR (4) HORIZONTAL TIE DISTANCES TO FIXED WITNESS MONUMENTS. DESCRIBE ALL MONUMENTS FOUND OR SET. CORRECT ALL DISTANCES SHOWN TO STANDARD TEMPERATURE OF 68° F.

- FOUND GRANITE STONE
- SET 3/4" REBAR WITH ALUMINUM CAPS
- VINYL SURVEY MARKER POST

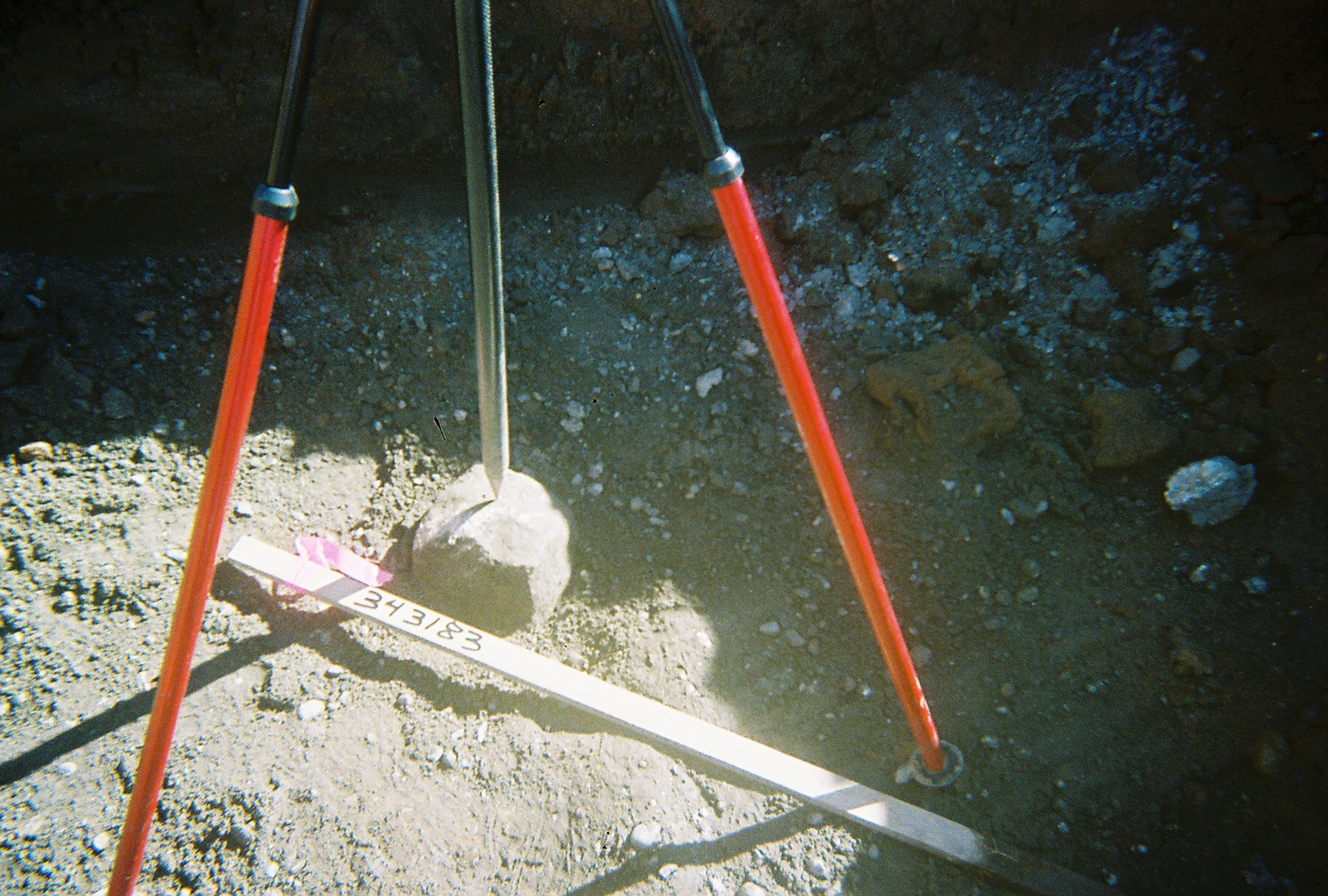
NOTE

- ALL BEARINGS ARE FROM A HAND HELD MAGNETIC COMPASS
- THIS DRAWING IS NOT TO SCALE



RECEIVED BY LINCOLN COUNTY SURVEYOR THIS 6TH DAY OF January 20 06
Tony Della
 COUNTY SURVEYOR

U-17



343183