

I, Kelly D. Callaway, do hereby
 certify that on 4th, day of November 2004, I found
 (evidence) of the SW

corner of Section 25, T31N, R8E,
 Fourth Principal Meridian, and I re-established
 said corner according to the Wisconsin Statutes
 Description of corner evidence found
 as shown and described hereon.

Dated this 22 day of November 2004

[Signature]
 Signature

Land Surveyor
 Title

U.S. PUBLIC LAND SURVEY MONUMENT RECORD

History of Corner

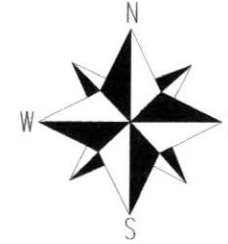
ORIGINAL CORNER SET BY A.G. ELLIS; F.S. ELLIS
 IN FEBRUARY OF 1852.



No. 0-21

DESCRIPTION OF CORNER EVIDENCE FOUND

FOUND A 6"x6" GRANITE 1 1/2" ABOVE GROUND
 AND SET A 3/4" REBAR ON THE NORTH SIDE OF
 STONE.



CENTRAL STAKING INC.
 2523 POST RD.
 STEVENS POINT, WI

Description of corner and witness monuments, references and accessories used to
 perpetuate the original or re-established location of this corner

Witnesses to corner location:

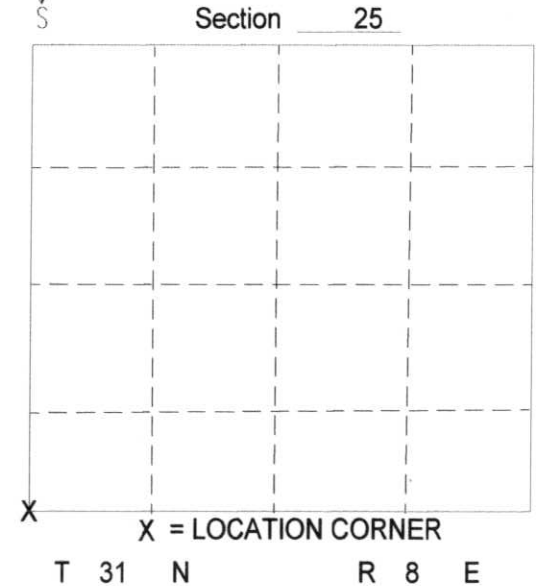
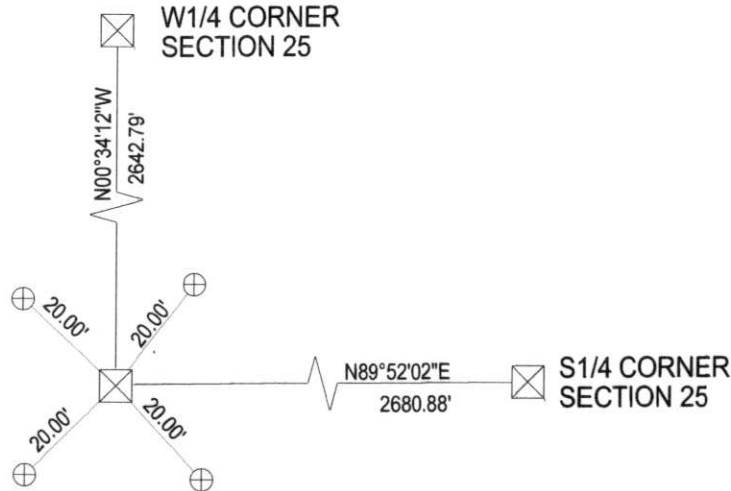
- ⊕ LINCOLN COUNTY ALUMINUM CAPPED WITNESS CORNER
- ⊗ 6"x6" GRANITE STONE

KENNY ERON

ERIC PETERSON

DUSTIN BINDER

RECEIVED BY LINCOLN COUNTY
 SURVEYOR THIS 22ND DAY
 OF November 2004
[Signature]
 COUNTY SURVEYOR



Survey Control Order

Horizontal:
Vertical:

Wisconsin County Coordinate System (Lincoln County)

Corner	East (x)	North (Y)	Elevation (Z)	Zone
Control Station Name	455,074.20'	105,663.66'		

Wisconsin

Town PINE RIVER

County LINCOLN

Drafted By KDC