

U.S. PUBLIC LAND SURVEY MONUMENT RECORD

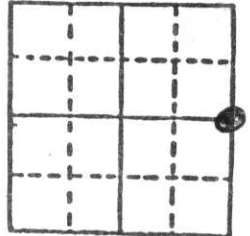
Note: This form is intended and designed to fulfill all requirements of Wisconsin Administrative Code, Chapter A-E 5.02, U.S. Public Land Survey Monument Record (3) (a) (b) (c) (d) (e) (f) (g) (h) (i). An additional sheet may be added if necessary to conform with said requirements.

(a) Corner location: Township 31 North

Range 8 East

Town EAST PART PINE RIVER

County LINCOLN



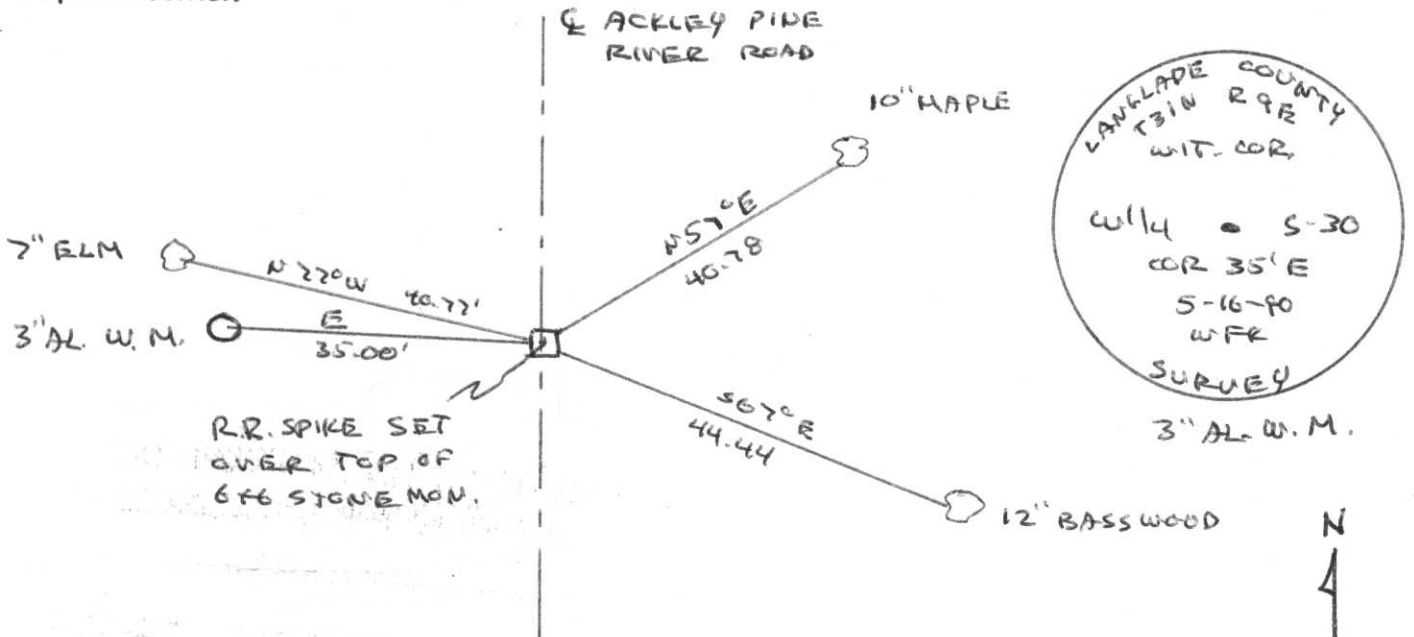
Section 25

b) (f) (g) (h) Description of monument found at this corner and if it was accepted, state all evidence (material, testimonial, occupational, plats, records, other monuments) used as a basis for accepting. If not accepted or if nothing was found, state evidence used as basis for establishing location. If reestablished through lost corner proportionate methods, indicate all monuments, distances and directions used to establish.

ORIGINAL CORNER ESTABLISHED BY J.M. MARSH IN
JUNE - JULY 1851

LOCATED 6x6 GRANITE MONUMENT BELOW ROAD SURFACE
SET R.R. SPIKE OVER STONE MONUMENT
SET W.C. AND MARKED BEARING TREES
(LANGLADE CO. WIT. MON.)

c) (d) (e) Plan view of corner with ties to at least 4 witness monuments. If in disagreement with previously established corner, show the distances between the two corners and also indicate the ties to the disputed corner.



(i) I, WILLIAM F. KELLY

(Type or print name) certify that the corner location on this record was determined by me or under my direction and control and that this U.S. Public Land Survey Monument Record is correct and complete to the best of my knowledge and belief.

William F. Kelly 11-14-90
Signature Date



MAG N

Index No. 1-25

S-25