

CERTIFIED LAND CORNER RESTORATION

Index No. U-23

State of Wisconsin }  
 County of Lincoln } ss.

I, Sheridan D. Schwark, do hereby certify that on the 4th day of December, 1980, I found evidence of the South 1/4 corner of Section 25 Township 31, North, Range 8 East, Fourth, Principal Meridian, as described hereon; and that from this evidence I established a new monument and accessories as described hereon to perpetuate the original location of this corner.

Resident witnesses:

.....

.....

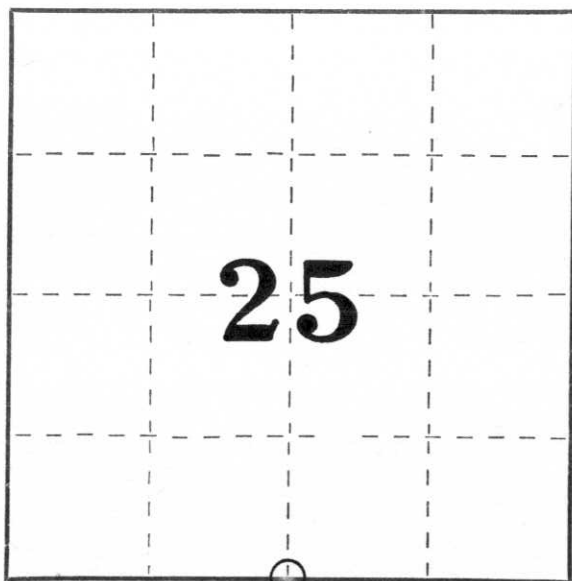
.....

History of original corner establishment:

Wood post set by original government surveyor.

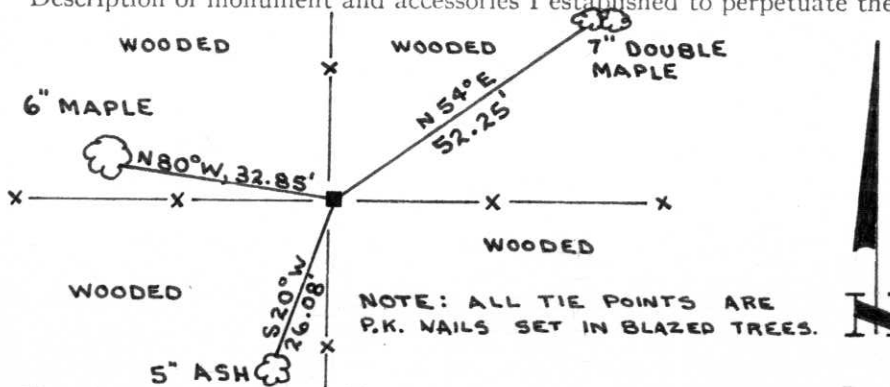
Description of corner evidence found:

We found a 6" x 6" x 30" red granite stone monument at a fence intersection. The stone had been heaved up by frost and was leaning south-westerly. We reset the stone leaving the top 6" above grade.



○ = Corner monument restored.

Description of monument and accessories I established to perpetuate the original location of this corner.



Dated at Merrill, Wis., this 12th day of December, 1980.

Signature Sheridan D. Schwark Title Registered Land Surveyor Registration No. S-1205  
 (County Surveyor, Registered Land Surveyor, or other duly authorized official)

Office of Register of Deeds, County of \_\_\_\_\_, I hereby certify that the within instrument was filed in this office for record on the \_\_\_\_\_ day of \_\_\_\_\_, 19\_\_\_\_ at \_\_\_\_\_ o'clock \_\_\_\_\_ M.

(Register of Deeds)

By \_\_\_\_\_ Deputy