

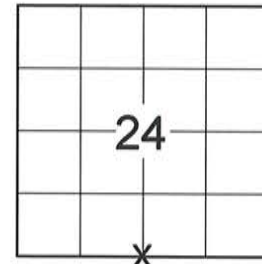
LINCOLN COUNTY U.S. PUBLIC LAND SURVEY MONUMENT LOCATION RECORD

SECTION 24
TOWNSHIP 31 N
RANGE 8 E

Q-23
NO.

LANDMARK BENCHMARK
CORNER IDENTITY: SOUTH 1/4 CORNER SECTION 24 (SNM-1 NAIL)
LINCOLN COUNTY COORDINATE: N: 110952.3870
E: 457673.6930
ELEVATION-(FEET): _____ DATUM: _____
WEATHER: CLEAR AND SUNNY
DATE OF SURVEY: 9/12/2014 TEMPERATURE: 65 °F
SURVEY PARTY: KEITH WALKOWSKI AND CHRIS FIERI

PINE RIVER
CITY, VILLAGE, TOWN
SECTION



LOCATION
(Indicated By)



BASIS FOR MONUMENT LOCATION:

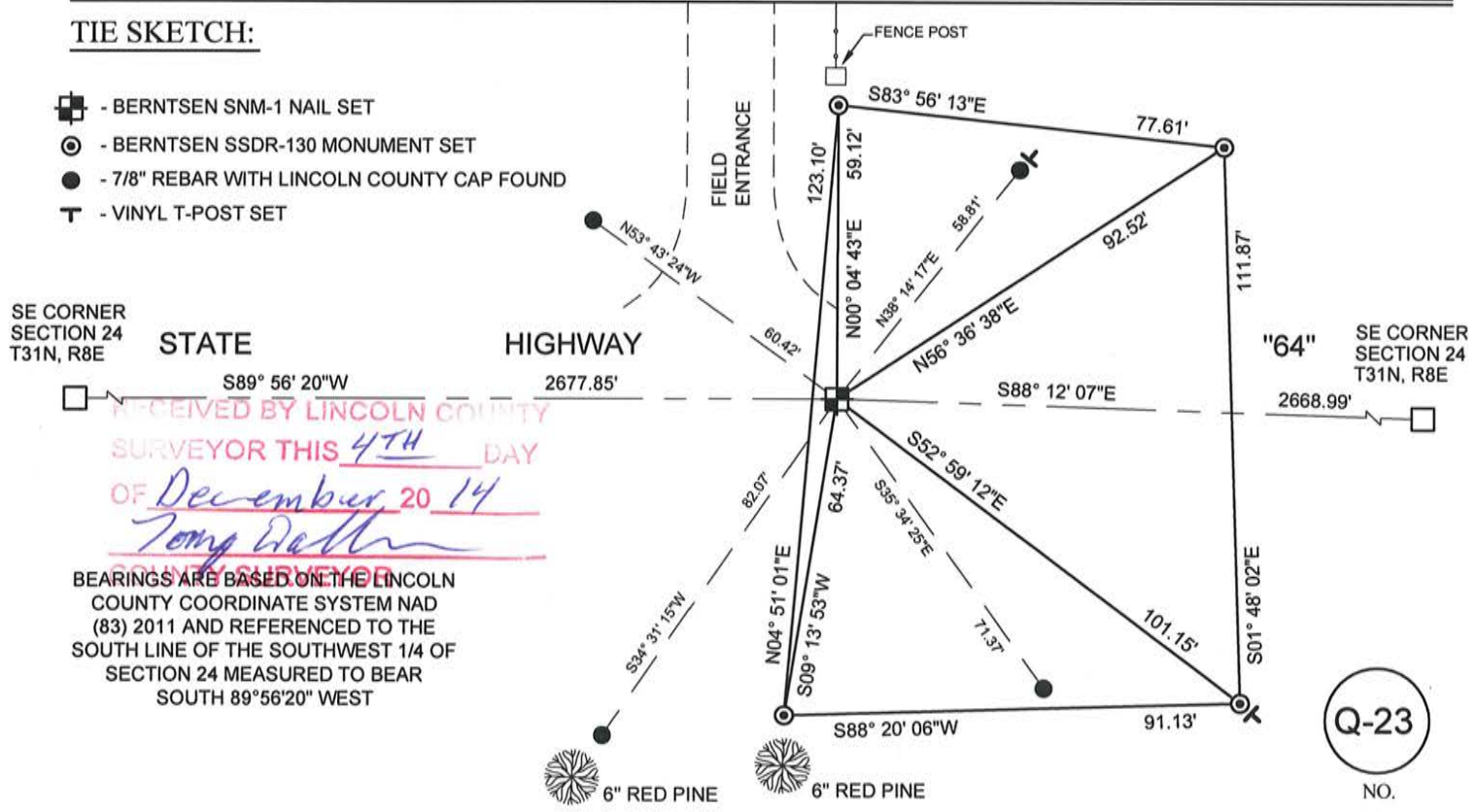
(DESCRIBE METHOD OF SURVEY AND CORNER AUTHENTICATION)
1/3/2006 - K. Walkowski S-2717 searched for the South 1/4 corner and found a MAG nail on the center line of S.T.H. "64". Mag Nail fits distances from right-of-way plat per project #T0393(1) to adjoining corners. He held this location as the best available evidence for the corner and replaced the MAG Nail with an SMP Nail and tied out the corner.
9/15/2014 - I visited the corner location prior to the resurfacing of Highway "64" and recovered the Survey Marker Nail of record. Also recovered all four (4) witness monuments from the previous corner restoration form. Distances checked well. Set four (4) Berntsen SSDR-130 witness monuments and returned after construction to set a Berntsen SNM-1 Nail at the corner location.

CERTIFIED CORRECT:
Christopher L. Fieri
CHRISTOPHER L. FIERI S-2954
Registered Land Surveyor
DATE: 11-20-2014

FIELD BOOK NO. 41 PAGE NO. 13
COMPANY RIVERSIDE LAND SURVEYING LLC

TIE SKETCH:

- BERNTSEN SNM-1 NAIL SET
- BERNTSEN SSDR-130 MONUMENT SET
- 7/8" REBAR WITH LINCOLN COUNTY CAP FOUND
- VINYL T-POST SET



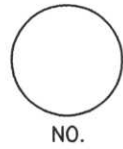
RECEIVED BY LINCOLN COUNTY
SURVEYOR THIS 4TH DAY
OF December 20 14
Tom Rath
COUNTY SURVEYOR

BEARINGS ARE BASED ON THE LINCOLN COUNTY COORDINATE SYSTEM NAD (83) 2011 AND REFERENCED TO THE SOUTH LINE OF THE SOUTHWEST 1/4 OF SECTION 24 MEASURED TO BEAR SOUTH 89°56'20" WEST

Q-23
NO.

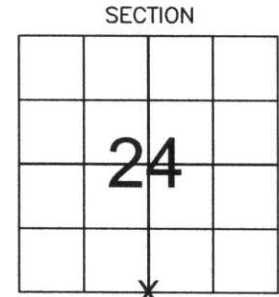
LINCOLN COUNTY U.S. PUBLIC LAND SURVEY MONUMENT LOCATION RECORD

CORNER NUMBER 243187
 SECTION 24
 TOWNSHIP 31 NORTH
 RANGE 8 EAST
 PINE RIVER
 CITY, VILLAGE, TOWN



LANDMARK BENCHMARK _____
 CORNER IDENTITY: SOUTH 1/4 CORNER
 LINCOLN COUNTY COORDINATE: N: 110941.27
 E: 452373.24
 ELEVATION--(FEET): _____ DATUM: _____
 WEATHER: MOSTLY CLOUDY
 DATE OF SURVEY: 12-10-05 TEMPERATURE: 20 °F
 SURVEY PARTY: NATHAN WINCENTSEN, KEITH WALKOWSKI

FOUND
 SET
 RESET
 RE-TIED



SECTION
 LOCATION
 (Indicated By X)



BASIS FOR MONUMENT LOCATION:
 (DESCRIBE METHOD OF SURVEY AND CORNER AUTHENTICATION)

UNABLE TO DIG IN S.T.H. "64" PER WDOT. SEARCHED FOR THE SOUTH 1/4 CORNER AND FOUND MAG NAIL ON CENTERLINE OF S.T.H. "64", MAG NAIL FITS DISTANCES FROM RIGHT-OF-WAY PLAT PER PROJECT #T0393(1) TO ADJOINING CORNERS. HELD THIS LOCATION AS BEST AVAILABLE EVIDENCE FOR THE SOUTH 1/4 CORNER AND REPLACED THE MAG NAIL WITH A SMP NAIL AND PERPETUATED AS SHOWN BELOW.



FIELD BOOK NO. PINE RIVER PAGE NO. 39
 COMPANY RIVERSIDE LAND SURVEYING LLC

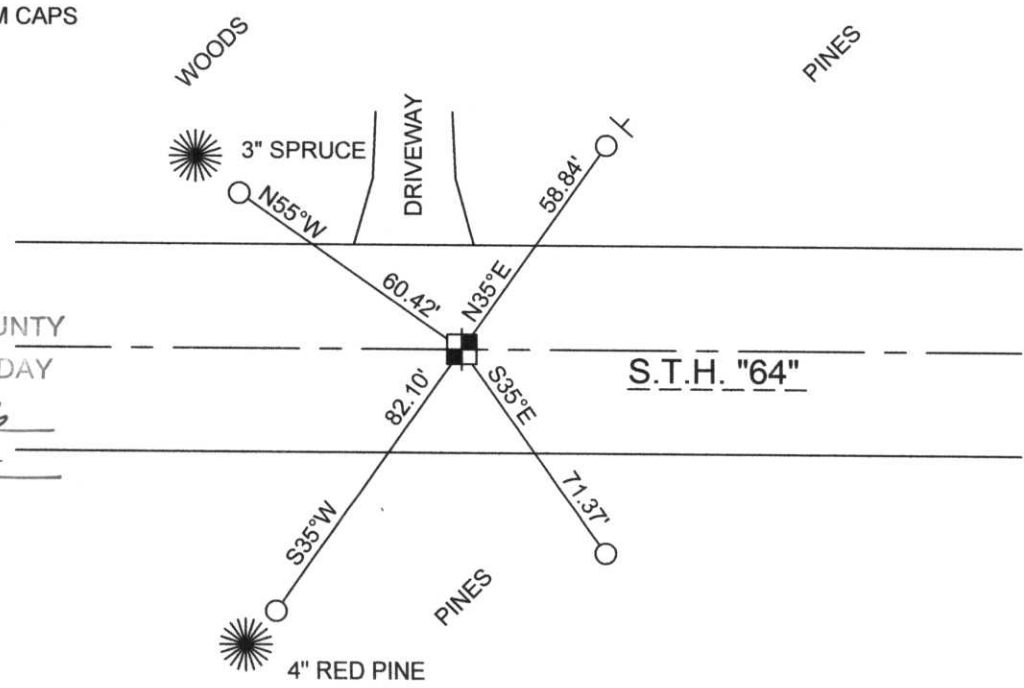
CERTIFIED CORRECT:
Keith J. Walkowski
KEITH J. WALKOWSKI
 Registered Land Surveyor
 DATE: Jan 3RD, 2006

TIE SKETCH: SHOW MINIMUM OF FOUR (4) HORIZONTAL TIE DISTANCES TO FIXED WITNESS MONUMENTS. DESCRIBE ALL MONUMENTS FOUND OR SET. CORRECT ALL DISTANCES SHOWN TO STANDARD TEMPERATURE OF 68° F.

- SET SMP NAIL
- SET 3/4" REBAR WITH ALUMINUM CAPS
- VINYL SURVEY MARKER POST

NOTE

- ALL BEARINGS ARE FROM A HAND HELD MAGNETIC COMPASS
- THIS DRAWING IS NOT TO SCALE



RECEIVED BY LINCOLN COUNTY SURVEYOR THIS 6TH DAY OF January 20 06
Tony Walker
 COUNTY SURVEYOR