

# LINCOLN COUNTY U.S. PUBLIC LAND SURVEY MONUMENT LOCATION RECORD

SECTION 23  
TOWNSHIP 31 N  
RANGE 8 E

Q-19

LANDMARK  BENCHMARK \_\_\_\_\_

FOUND   
SET   
RESET   
RE-TIED

CORNER IDENTITY: SOUTH 1/4 CORNER SECTION 23 (SNM-1 NAIL)

LINCOLN COUNTY COORDINATE: N: 110941.3100  
E: 452373.1480

ELEVATION-(FEET): \_\_\_\_\_ DATUM: \_\_\_\_\_

WEATHER: CLEAR AND SUNNY

DATE OF SURVEY: 9/12/2014 TEMPERATURE: 65 °F

SURVEY PARTY: KEITH WALKOWSKI AND CHRIS FIERI

PINE RIVER  
CITY, VILLAGE, TOWN



LOCATION (Indicated)



## BASIS FOR MONUMENT LOCATION:

(DESCRIBE METHOD OF SURVEY AND CORNER AUTHENTICATION)

1/4/2004 - K. Walkowski S-2717 visited this corner and found a Survey Marker Nail ±12 feet North of the centerline of S.T.H. "64" from a previous survey by Becher and Hoppe. The Nail fits fence line to the South and seemed to be set by single proportionate measurement. Held this location as the best available evidence of the corner location and set witness monuments to perpetuate the position.

9/15/2014 - I visited the corner location prior to the resurfacing of Highway "64" and recovered the survey marker nail of record. Also recovered all four (4) witness monuments from the previous corner restoration form. Distances checked well. Set four (4) Berntsen SDDR-130 witness monuments and returned after construction to set a Berntsen SNM-1 Nail at the corner location.

CERTIFIED CORRECT:

*Christopher L. Fieri*

CHRISTOPHER L. FIERI S-2954

Registered Land Surveyor

DATE: 11-20-2014

FIELD BOOK NO. 41 PAGE NO. 14

COMPANY RIVERSIDE LAND SURVEYING LLC

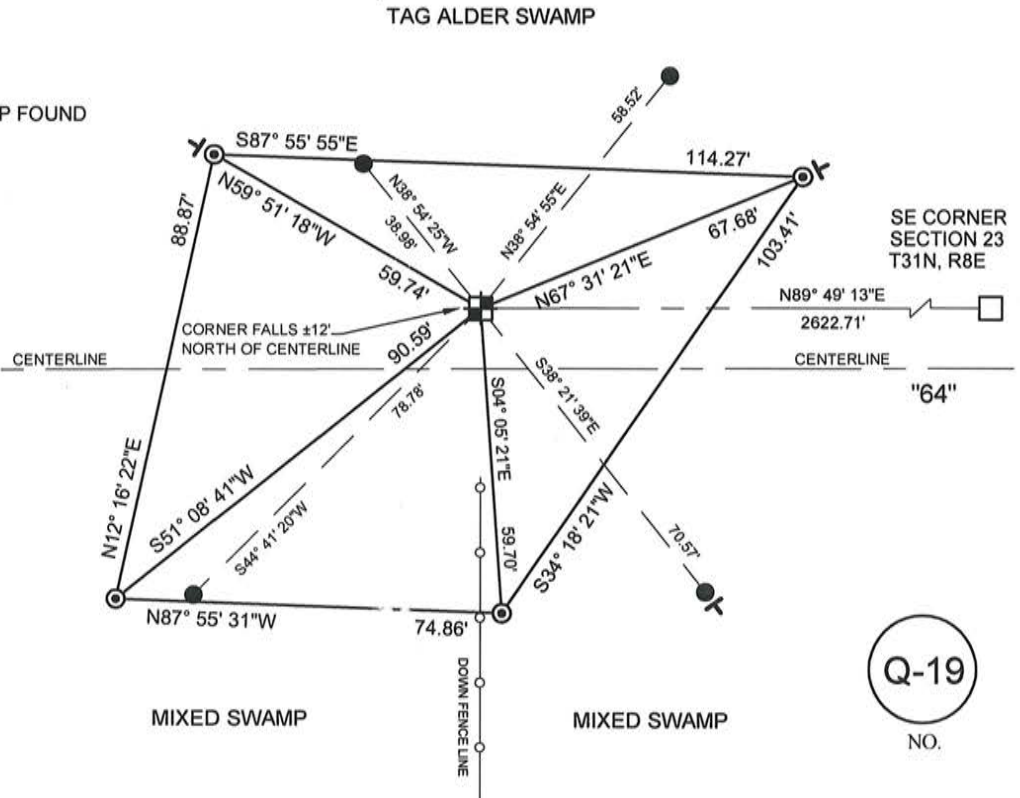
## TIE SKETCH:

- BERNTSEN SNM-1 NAIL SET
- BERNTSEN SDDR-130 MONUMENT SET
- 7/8" REBAR WITH LINCOLN COUNTY CAP FOUND
- VINYL T-POST SET

RECEIVED BY LINCOLN COUNTY  
SURVEYOR THIS 4<sup>TH</sup> DAY  
OF December 20 14  
*Tony Dalt*  
COUNTY SURVEYOR

STATE

HIGHWAY



BEARINGS ARE BASED ON THE LINCOLN COUNTY COORDINATE SYSTEM NAD (83) 2011 AND REFERENCED TO THE SOUTH LINE OF THE SOUTHEAST 1/4 OF SECTION 23 MEASURED TO BEAR NORTH 89°49'13" EAST

Q-19

NO.

# LINCOLN COUNTY U.S. PUBLIC LAND SURVEY MONUMENT LOCATION RECORD

CORNER NUMBER 233187

SECTION 23

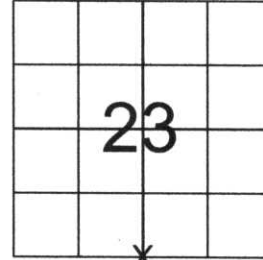
TOWNSHIP 31 NORTH

RANGE 8 EAST

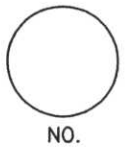
PINE RIVER

CITY, VILLAGE, TOWN

SECTION



LOCATION  
(Indicated By X)



LANDMARK  BENCHMARK \_\_\_\_\_  
CORNER IDENTITY: SOUTH 1/4 CORNER

FOUND   
SET   
RESET   
RE-TIED

LINCOLN COUNTY COORDINATE: N: 110941.27  
E: 452373.24

ELEVATION-(FEET): \_\_\_\_\_ DATUM: \_\_\_\_\_

WEATHER: MOSTLY CLOUDY

DATE OF SURVEY: 12-10-05 TEMPERATURE: 20 °F

SURVEY PARTY: NATHAN WINCENTSEN, KEITH WALKOWSKI

## BASIS FOR MONUMENT LOCATION:

(DESCRIBE METHOD OF SURVEY AND CORNER AUTHENTICATION)

UNABLE TO DIG IN S.T.H. "64" PER WDOT. SEARCHED FOR SOUTH 1/4 CORNER AND FOUND A SMP NAIL 11.8' NORTH OF CENTERLINE FROM PREVIOUS SURVEYS BY BECHER AND HOPPE. SAID SMP NAIL FITS FENCE LINE TO THE SOUTH AND SEEMS TO BE SET BY METHOD OF SINGLE PROPORTIONATE MEASUREMENT. HELD THIS LOCATION AS BEST AVAILABLE EVIDENCE AND PERPETUATED AS SHOWN BELOW.



CERTIFIED CORRECT:  
Keith J. Walkowski  
KEITH J WALKOWSKI  
Registered Land Surveyor  
DATE: Jan. 4th, 2006

FIELD BOOK NO. PINE RIVER PAGE NO. 40  
COMPANY RIVERSIDE LAND SURVEYING LLC

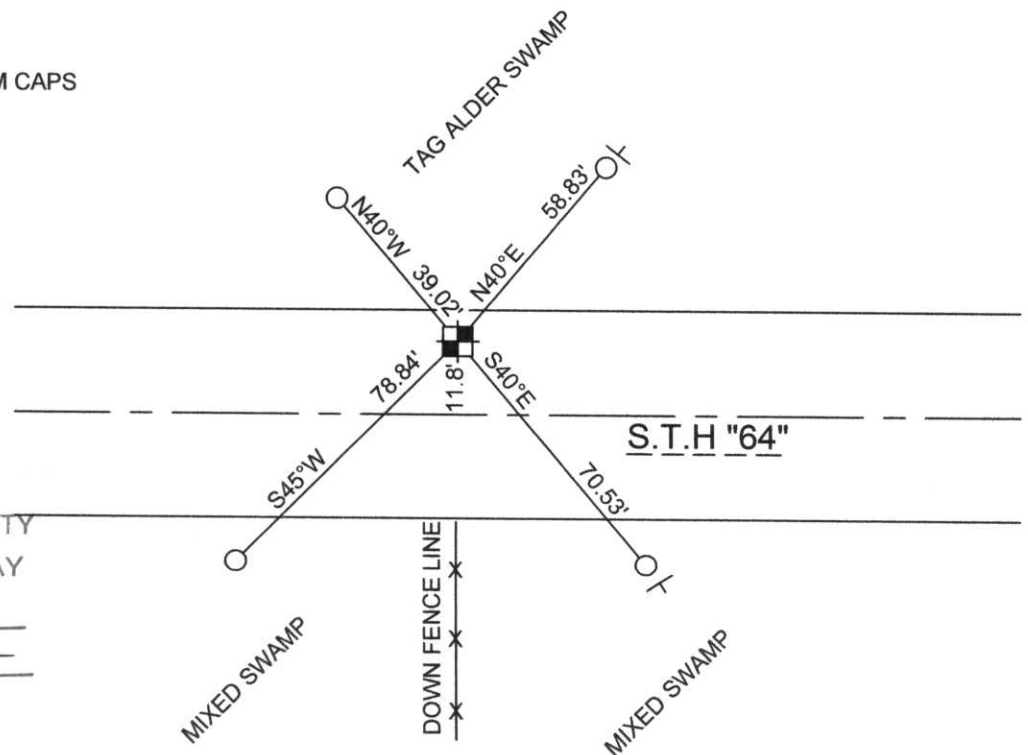
## TIE SKETCH:

SHOW MINIMUM OF FOUR (4) HORIZONTAL TIE DISTANCES TO FIXED WITNESS MONUMENTS. DESCRIBE ALL MONUMENTS FOUND OR SET. CORRECT ALL DISTANCES SHOWN TO STANDARD TEMPERATURE OF 68° F.

- FOUND SMP NAIL
- SET 3/4" REBAR WITH ALUMINUM CAPS
- VINYL SURVEY MARKER POST

NOTE

- ALL BEARINGS ARE FROM A HAND HELD MAGNETIC COMPASS
- THIS DRAWING IS NOT TO SCALE



RECEIVED BY LINCOLN COUNTY SURVEYOR THIS 6th DAY OF January 20 06  
Tony Dalko  
COUNTY SURVEYOR

0-19