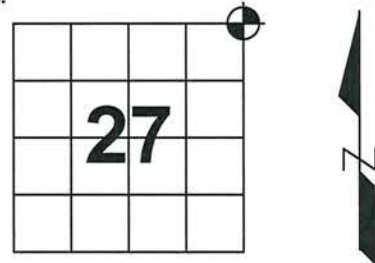


U.S. PUBLIC LAND SURVEY MONUMENT RECORD

Note: This form is intended and designed to fulfill all requirements of Wisconsin Administrative Code, Chapter A-E 7.08, U.S. Public Land Survey Monument Record (3) (a) (b) (c) (d) (e) (f) (g) (h) (i). An additional sheet may be added if necessary to conform with said requirements.

(a) Corner location: Township 31 North
 Range 8 East
 Town/City/Village Pine River
 County Lincoln



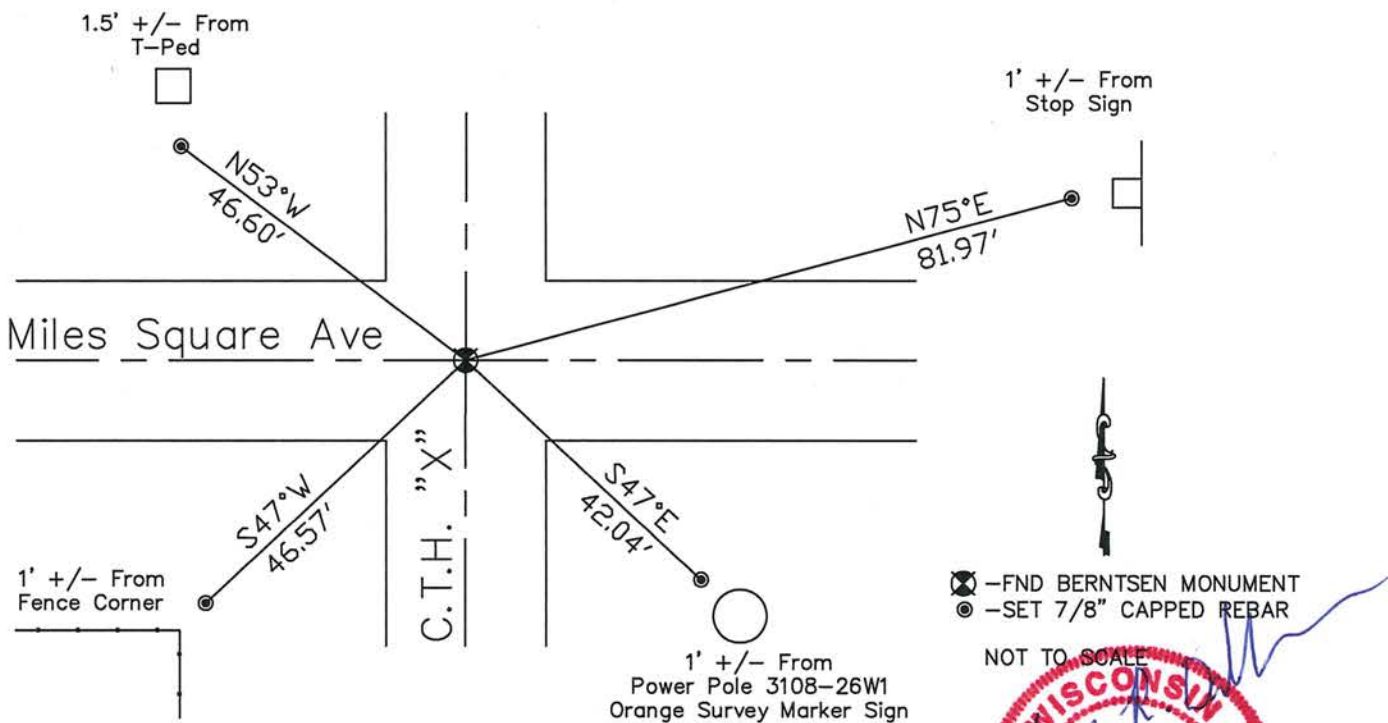
(b) (f) (g) (h) Description of monument found at this corner and if it was accepted, state all evidence (material, testimonial, occupational, plats, records, other monuments) used as basis for accepting. If not accepted or if nothing was found, state evidence used as basis for establishing location. If reestablished through lost corner proportionate methods, indicate all monuments, distances and directions used to establish.

Feb. 1852 - Ellis, A. G; Ellis, F. S. set post common to Sections 22,23,26, and 27.
 Hemlock 10 N70°E 25 lks
 Soft Maple 21 S18°W 20 lks

Aug. 1997 - Osterbrink, David dug at CL intersection down 4.5', 2' into undisturbed soil. Dug a 5'x10' hole. Found no evidence of corner, only a 6" piece of barbed wire. Set Berntsen monument at CL intersection.

May 2012 - Dallman, Anthony R. found P.K. and 1 tie. Dug down 12" at CL intersection of Hwy X and Miles Square Ave. found Berntsen monument. Witnessed as shown below:

(c) (d) (e) Plan view of corner with ties to at least 4 witness monuments. If in disagreement with previously established corner, show the distance between the two corners and also indicate the ties to the disputed corner.



(i) I, Anthony R. Dallman

(type or print name) certify that the corner location on this record was determined by me or under my direction and control and that this U.S. Public Land Survey Monument Record is correct and complete to the best of my knowledge and belief.

Anthony R. Dallman
 Signature

10/18/13
 Date



Index No. Q-17









