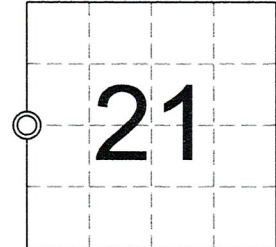


U.S. PUBLIC LAND SURVEY MONUMENT RECORD

Note: This form is intended and designed to fulfill all requirements of Wisconsin Administrative Code, Chapter A-E 7.08 U.S. Public Land Survey Monument Record (3)(a)(b)(c)(d)(e)(f)(g)(h)(i). An additional sheet may be added to if necessary to conform with said requirements.

(a) Corner Location: West Quarter Corner
 Section 21,
 Township 31 North,
 Range 8 East,
 Town of Pine River,
 Lincoln County, Wisconsin
 Observed coordinates
 Lincoln County Grid NAD83(2011)
 N: 113596.33
 E: 439178.65



SEC 21-T31N-R8E

(b)(f)(g)(h) Description of monument found at this corner and if it was accepted, state all evidence (material, testimonial, occupational, plats, records, other monuments) used as a basis for accepting. If not accepted or if nothing was found, state evidence used as basis for establishing location. If reestablishment through lost corner proportionate methods, indicate all monuments, distances and directions used to establish. Indicate type of monument found or set and sign post.

1852 Feb. - Ellis, A.; Ellis, F.S - Set Quarter Section Post. Birch 18 West 3 links, Pine 8 N47°E 5 links

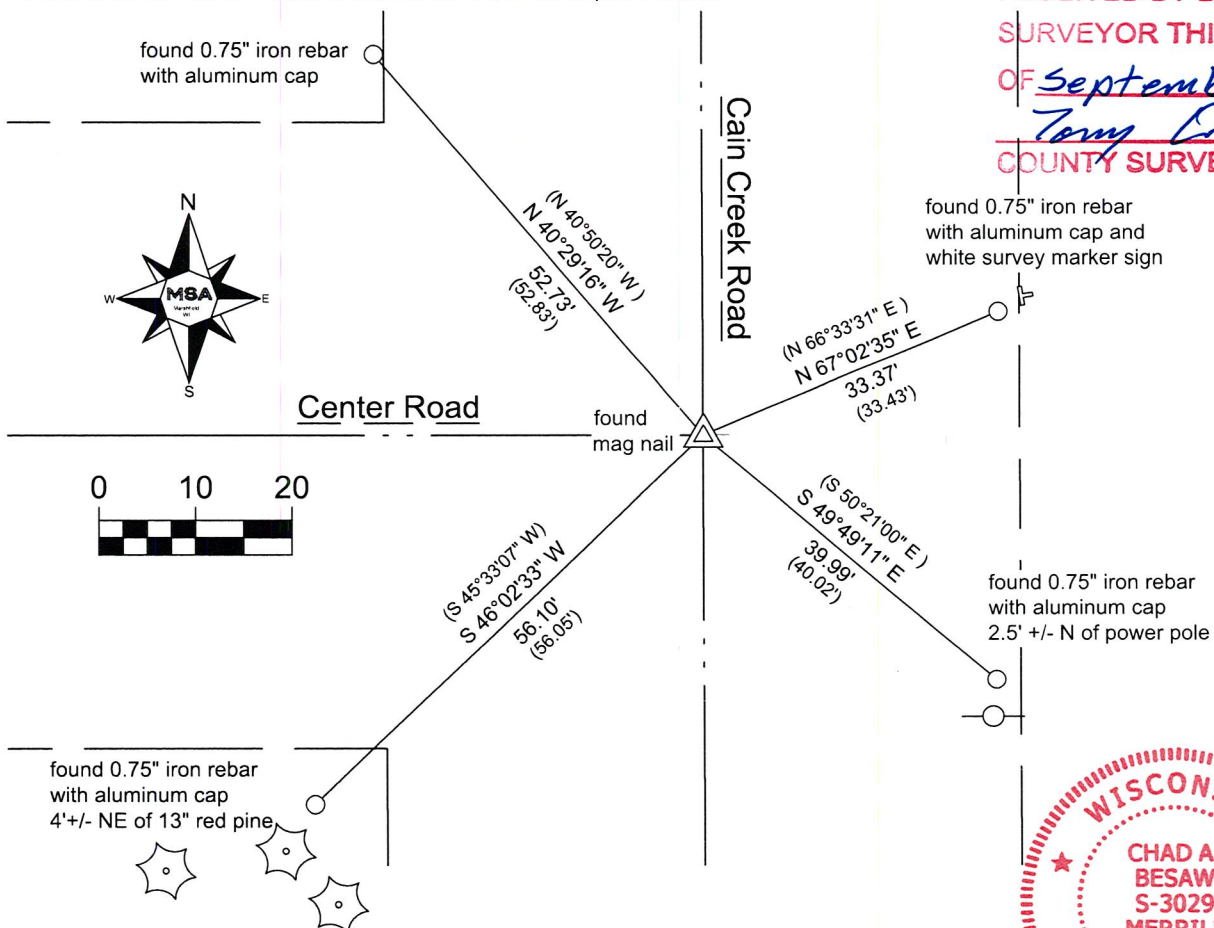
---- - Remonumentation surveys through out portions of Lincoln County commonly set granite stones.

2003 March - David J. Goslin - excavated in blacktop road, found 6"x6" granite monument, top 2 feet of stone broken off, dug to good base. Set top 2 feet of stone on base and set 1"x18" iron pipe on North Side. Top of Stone is 1.3' below road surface. accepted stone as correct location for quarter Section Corner and tied out. Prepared section summary showing stone monument at corner location.

2006 March - Keith J. Walkowski - Prepared township summary for Town of Pine River remonumentation project showing a mag nail at corner location.

2018 August - Chad A. Besaw - Road was possibly resurfaced since 2006. Found all of Goslin's ties in good condition. Found no surface monument in June of 2018, revisited in August 2018 to set corner and found mag nail which closely matches Goslin's ties. Re-witnessed as shown below.

(c)(d)(e) Plan view of corner with ties to at least 4 witness monuments. If in disagreement with previously established corner, show the distances between the two corners and also indicate the ties to the disputed corner.



RECEIVED BY LINCOLN COUNTY
 SURVEYOR THIS 6TH DAY
 OF September 20 18
Tom Dahl
 COUNTY SURVEYOR

WISCONSIN
 CHAD A. BESAW
 S-3029
 MERRILL
 WI
 LAND SURVEYOR
Chad A. Besaw
 8/27/18

Index No.

0-9

(i) I, Chad A. Besaw, Professional Land Surveyor #S-3029, hereby certify that the corner location on this record was determined by me or under my direction and control and that this U.S. Public Land Survey Monument Record is correct and complete to the best of my knowledge and belief.

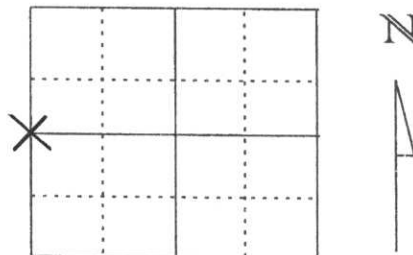
Chad A. Besaw
 Signature

8/27/2018
 Date

U.S. PUBLIC LAND SURVEY MONUMENT RECORD

Note: This form is intended and designed to fulfill all requirements of Wisconsin Administrative Code, Chapter A-E 5.02, U.S. Public Land Survey Monument Record (3) (a) (b) (c) (d) (e) (f) (g) (h) (l). An additional sheet may be added if necessary to conform with said requirements.

(a) Corner location: Township 31 North
 Range 8 East
 Town/City/Village PINE RIVER
 County Lincoln



Section 21

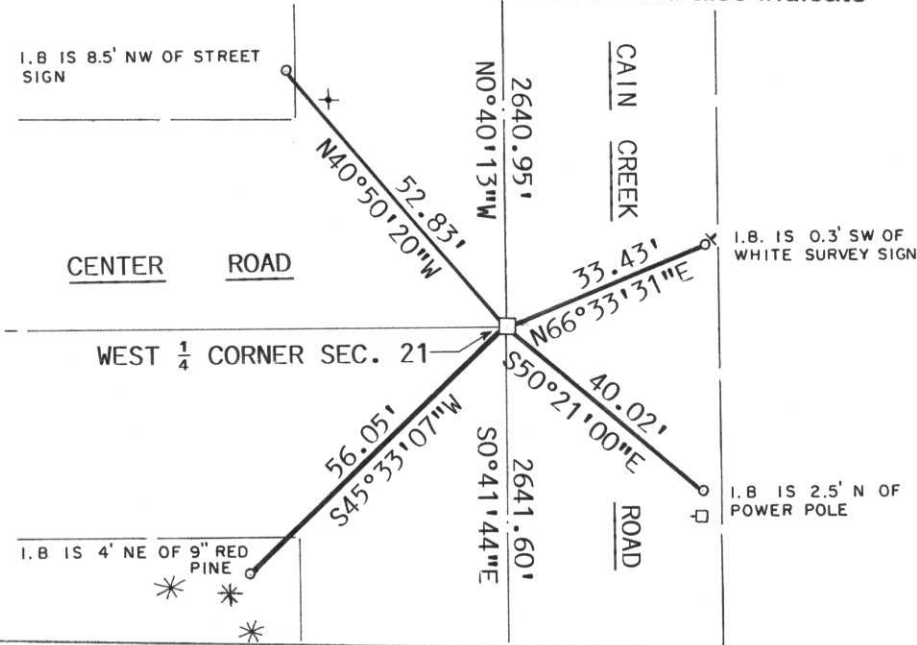
(b) (f) (g) (h) Description of monument found at this corner and if it was accepted, state all evidence (material, testimonial, occupational, plats, records, other monuments) used as a basis for accepting. If not accepted or if nothing was found, state evidence used as basis for establishing location. If reestablished through lost corner proportionate methods, indicate all monuments, distances and directions used to establish.

Notes of the original government survey indicate wood posts were set at all Section and Quarter-Section corners. Stone Monuments were subsequently placed at all corners in this during remonumentation surveys.
 We excavated in blacktop road with Lincoln County grade-all. Found 6"x6" Granite Monument. The top 2 feet of stone was broken off. Dug deeper and found good base. Set top 2 feet of stone on base and set 1"x18" iron pipe on north side. Top of stone is 1.3' below road surface. Accepted stone as correct location for Quarter-Section Corner. Tied out as shown below.

RECEIVED AT LINCOLN COUNTY
 COURTHOUSE THIS 2ND DAY
 OF April 20 03
Tom Dallen
 LAND INFORMATION OFFICE

(c) (d) (e) Plan view of corner with ties to at least 4 witness monuments. If in disagreement with previously established corner, show the distances between the two corners and also indicate the ties to the disputed corner.

- LEGEND**
- o Set 7/8"x30" re-bar with aluminum witness cap
 - 6"x6" Granite Monument
Scale: 1"=30'



(l) I, David J. Goslin
 (type or print name) certify that the corner location on this record was determined by me or under my direction and control and that this U.S. Public Land Survey Monument Record is correct and complete to the best of my knowledge and belief.
David J. Goslin March 28, 2003
 Signature Date

Index No. 0-9