

MINI-CAPITAL SURVEYING, INC.  
 SURVEY MONUMENT LOCATION RECORD

LANDMARK  BENCHMARK

CORNER IDENTITY E 1/4 COR SEC 19

DATE OF SURVEY AUG 6, 1974

WEATHER \_\_\_\_\_

TEMPERATURE 80°±

SURVEY PARTY DT + DM

FOUND   
 SET   
 RE-SET   
 RE-TIED

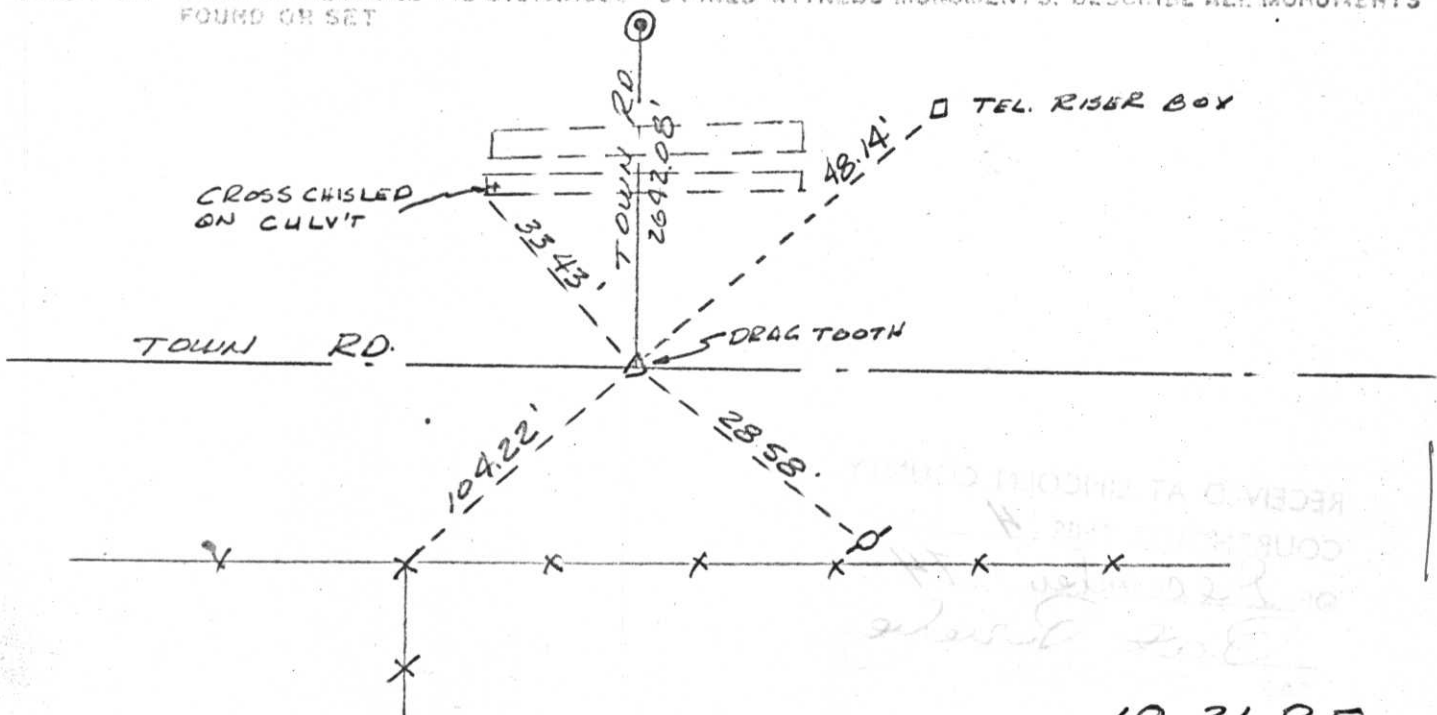
SECTION 19  
 TOWNSHIP 31  
 RANGE 8E

CITY, VILLAGE, TOWNSHIP  
LINCOLN COUNTY



BASIS FOR MONUMENT LOCATION  
 DESCRIBE METHOD OF SURVEY AND CORNER AUTHENTICATION

TIE SKETCH SHOW HORIZONTAL TIE DISTANCES TO FIXED WITNESS MONUMENTS. DESCRIBE ALL MONUMENTS FOUND OR SET



0-5

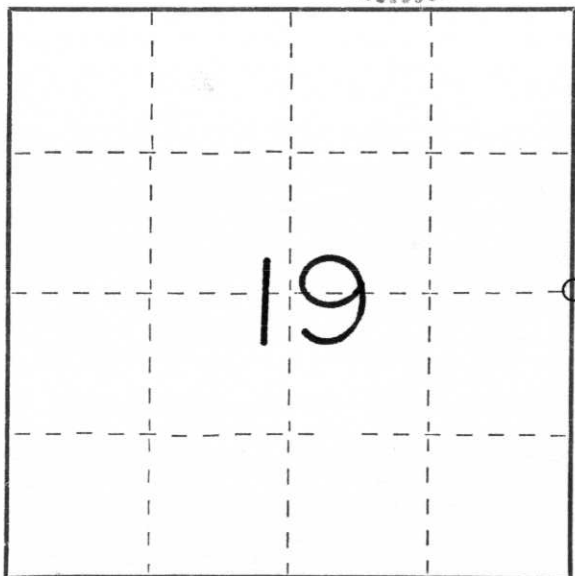
CERTIFIED LAND CORNER RESTORATION

Index No. 0-5

State of Wisconsin } ss.  
County of Lincoln

I Charles Offerman, do hereby certify that on the 8th day of October, 1982, I found evidence of the East 1/4 corner of Section 19 Township 31 North, Range 8 East, Fourth, Principal Meridian, as described hereon; and that from this evidence I established a new monument and accessories as described hereon to perpetuate the original location of this corner.

Resident witnesses:



○ = Corner monument restored.

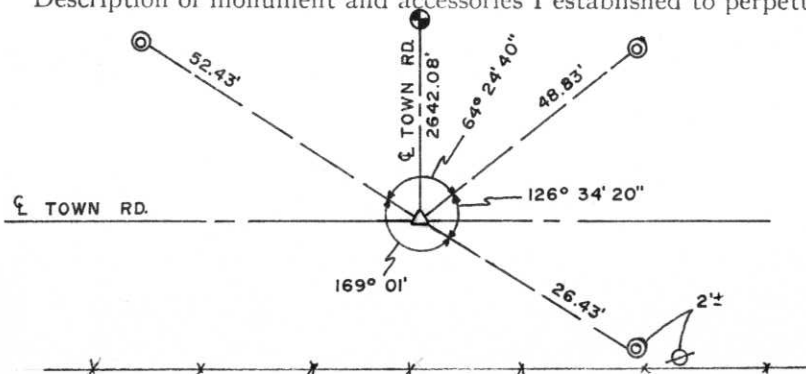
History of original corner establishment:

Set by original government survey.

Description of corner evidence found:

No evidence of the original corner nor it's accessories was found. the corner was re-established at the intersection of centerlines of two town roads, one running east and west and the other running north. This was accepted as the best available evidence and is harmoniously related to existing local conditions.

Description of monument and accessories I established to perpetuate the original location of this corner.



LEGEND

- ⊙ 2" Iron Pipe set for witness monuments.
- ⊕ 30" Bernstein monument set
- △ Drag tooth set
- ⊖ Utility pole

Dated at Medford, Wis., this 11th day of October, 1982.

Signature Charles Offerman Title Registered Land Surveyor Registration No. S926  
(County Surveyor, Registered Land Surveyor, or other duly authorized official)

Office of Register of Deeds, County of \_\_\_\_\_, I hereby certify that the within instrument was filed in this office for record on the \_\_\_\_\_ day of \_\_\_\_\_, 19 \_\_\_\_\_ at \_\_\_\_\_ o'clock \_\_\_\_\_ M.

(Register of Deeds)

By \_\_\_\_\_ Deputy