

LINCOLN COUNTY U.S. PUBLIC LAND SURVEY MONUMENT LOCATION RECORD

SECTION 15
TOWNSHIP 31 N
RANGE 8 E

K-17
NO.

LANDMARK BENCHMARK

FOUND
SET
RESET
RE-TIED

CORNER IDENTITY: EAST 1/4 CORNER SECTION 15 (SNM-1 NAIL)
LINCOLN COUNTY COORDINATE: N: 118849.5730
E: 449863.8220

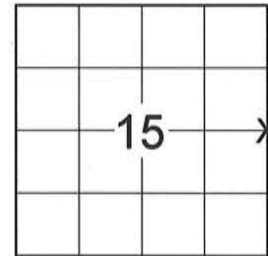
ELEVATION-(FEET): _____ DATUM: _____

WEATHER: CLEAR AND SUNNY

DATE OF SURVEY: 9/12/2014 TEMPERATURE: 65 °F

SURVEY PARTY: KEITH WALKOWSKI AND CHRIS FIERI

PINE RIVER
CITY, VILLAGE, TOWN
SECTION



LOCATION
(Indicated By)



BASIS FOR MONUMENT LOCATION:

(DESCRIBE METHOD OF SURVEY AND CORNER AUTHENTICATION)

5/14/1993 - L. Mosher S-1188 found no evidence of the corner. Old right-of-way plat indicated corner to be in the centerline of Highway "64". He ran a traverse of Section 15 to aid in establishing this and other corners. He established the corner location on the highway centerline on an extension of a fence line to the East. Set a P.K. Nail at the corner location and set four (4) witness monuments.

9/15/2014 - I visited the corner location prior to the resurfacing of Highway "64" and recovered a Survey Marker Nail. Also recovered all four (4) witness monuments from the previous corner restoration form. Distances checked well. Set four (4) Berntsen SSDR-130 witness monuments and returned after construction to set a Berntsen SNM-1 Nail at the corner location.

CERTIFIED CORRECT:

Christopher L. Fieri

CHRISTOPHER L. FIERI S-2954
Registered Land Surveyor

DATE: 11-20-2014

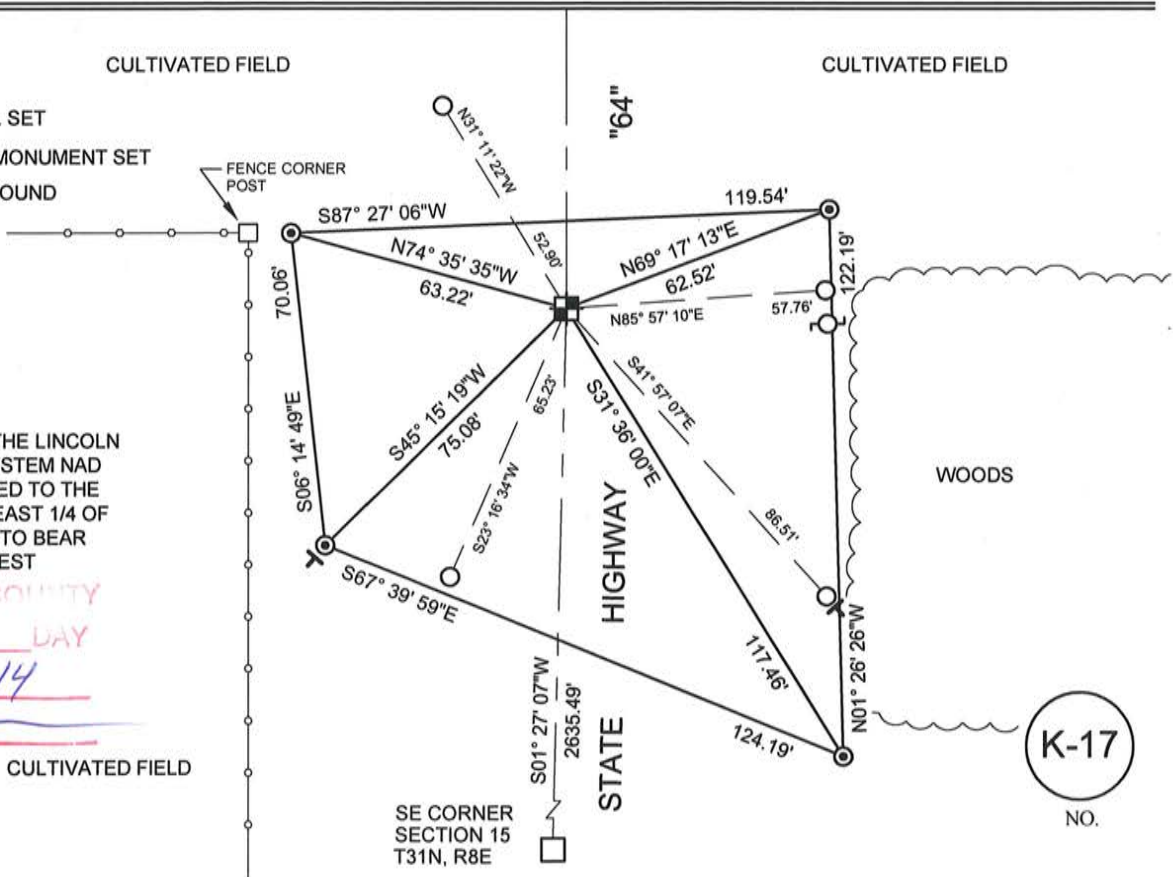
FIELD BOOK NO. 41 PAGE NO. 15

COMPANY RIVERSIDE LAND SURVEYING LLC

TIE SKETCH:

- BERNTSEN SNM-1 NAIL SET
- BERNTSEN SSDR-130 MONUMENT SET
- 1-1/4" O.D. IRON PIPE FOUND
- VINYL T-POST SET

BEARINGS ARE BASED ON THE LINCOLN COUNTY COORDINATE SYSTEM NAD (83) 2011 AND REFERENCED TO THE EAST LINE OF THE SOUTHEAST 1/4 OF SECTION 15 MEASURED TO BEAR SOUTH 01°27'07" WEST



RECEIVED BY LINCOLN COUNTY
SURVEYOR THIS 4TH DAY
OF December 20 14
Tom Walkowski
COUNTY SURVEYOR

K-17
NO.

U.S. PUBLIC LAND SURVEY MONUMENT RECORD

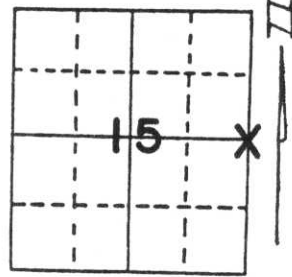
Note: This form is intended and designed to fulfill all requirements of Wisconsin Administrative Code, Chapter A-E 5.02, U.S. Public Land Survey Monument Record (3) (a) (b) (c) (d) (e) (f) (g) (h) (i). An additional sheet may be added if necessary to conform with said requirements.

(a) Corner location: Township 31 North

Range 8 East

Town/City/Village PINE RIVER

County LINCOLN



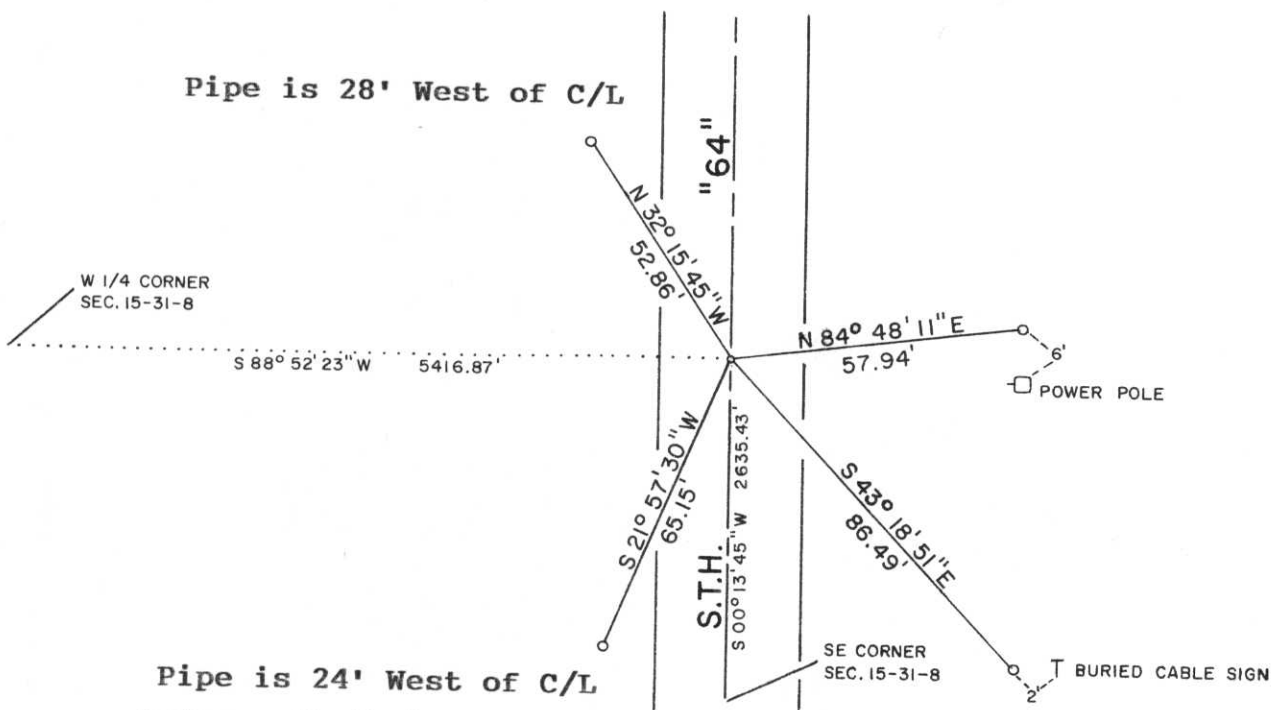
Section 15

(b) (f) (g) (h) Description of monument found at this corner and if it was accepted, state all evidence (material, testimonial, occupational, plats, records, other monuments) used as a basis for accepting. If not accepted or if nothing was found, state evidence used as basis for establishing location. If reestablished through lost corner proportionate methods, indicate all monuments, distances and directions used to establish.

Found no evidence of corner. Old R/W plat of Highway "64" indicated corner in center of Highway. Ran a traverse of entire Section 15 to aid in establishing this and other corners. Established corner point on Highway centerline at old fence line to East. Set PK Nail at corner in blacktop roadway surface.

NOTE: All ties are to 1" x 24" Iron Pipes set flush with ground. Tie Bearings shown hereon are referenced to the North line of the Northwest $\frac{1}{4}$ of Section 15-31-8 East.

(c) (d) (e) Plan view of corner with ties to at least 4 witness monuments. If in disagreement with previously established corner, show the distances between the two corners and also indicate the ties to the disputed corner.



(i) I, LaVerne H. Mosher
 (type or print name) certify that the corner location on this record was determined by me or under my direction and control and that this U.S. Public Land Survey Monument Record is correct and complete to the best of my knowledge and belief.

LaVerne H. Mosher

Signature

MAY 14, 1993

Date



Index No. K-17