



CERTIFIED LAND CORNER RESTORATION

Index No. M-15

State of Wisconsin }  
County of LINCOLN } ss.

History of original corner establishment:

Original corner was wood post. Granite stone was placed during Lincoln County remonumentation.

I EDWIN R. ABENDROTH, do hereby certify that on the 7<sup>th</sup> day of JULY, 1981, I found evidence of the NORTH 1/4 corner of SEC. 22 Township 31, North, Range 8 EAST, Fourth, Principal Meridian, as described hereon; and that from this evidence I established a new monument and accessories as described hereon to perpetuate the original location of this corner.

NO ORIGINAL EVIDENCE DISCOVERED

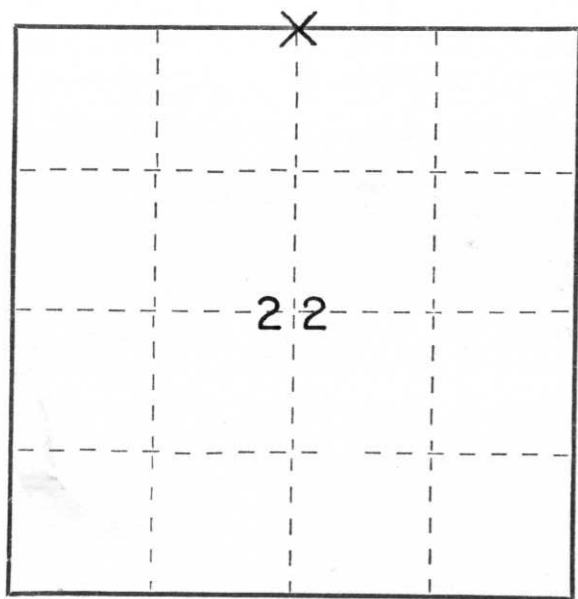
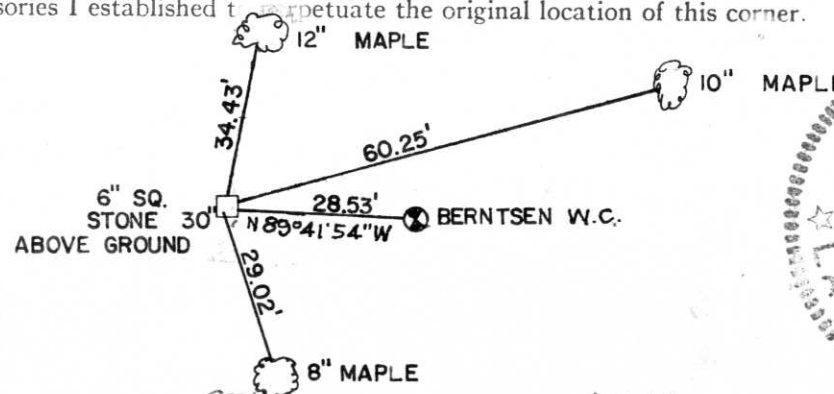
Description of corner evidence found:

Resident witnesses:

FOUND EXISTING 6"X6" GRANITE STONE 30" ABOVE GROUND

Description of monument and accessories I established to perpetuate the original location of this corner.

NOTE:  
ALL BEARING TREES  
ARE BLAZED P.K. NAILS  
SET IN BLAZE.



○ = Corner monument restored.

Dated at WAUSAU, Wis., this 9<sup>TH</sup> day of JULY, 1981

Signature Edwin R. Abendroth Title REG. LAND SURVEYOR Registration No. S-798  
(County Surveyor, Registered Land Surveyor, or other duly authorized official)

Office of Register of Deeds, County of LINCOLN, I hereby certify that the within instrument was filed in this office for record on the \_\_\_\_\_ day of \_\_\_\_\_, 19\_\_\_\_ at \_\_\_\_\_ o'clock \_\_\_\_\_ M.

(Register of Deeds)

By \_\_\_\_\_ Deputy