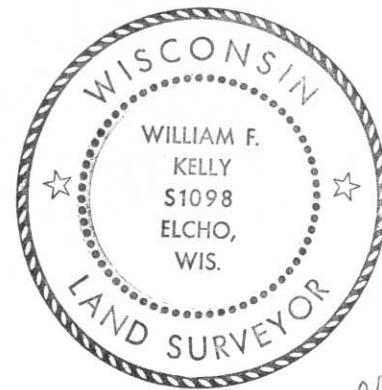




CERTIFIED LAND CORNER RESTORATION



Index No. K-21

State of Wisconsin }  
County of LINCOLN } ss.

History of original corner establishment:

I WILLIAM F. KELLY, do hereby certify that on the 13<sup>TH</sup> day of FEBRUARY, 1975, I found evidence of the 1/4 SECTION corner of SECTIONS 14 & 13 Township 31, North, Range 8 EAST, Fourth, Principal Meridian, as described hereon; and that from this evidence I established a new monument and accessories as described hereon to perpetuate the original location of this corner.

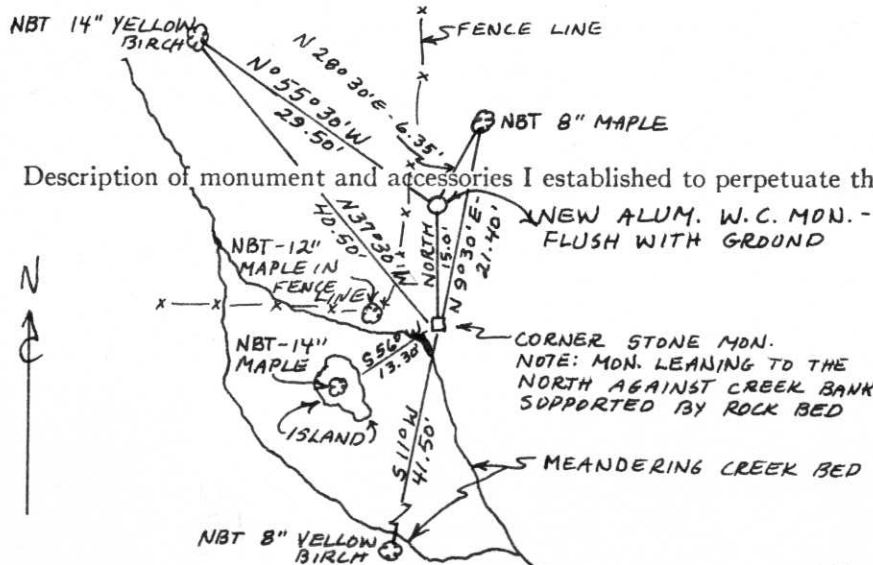
Resident witnesses:

ARNOLD KAUTZ  
\_\_\_\_\_  
\_\_\_\_\_

Description of corner evidence found:

LOCATED 6x6 GRANITE STONE IN ROCK BED AT EDGE OF SMALL MEANDERING CREEK. STONE PLACED IN 1920s AND IDENTIFIED BY RESIDENT WITNESS AS THE 1/4 CORNER.

*William F. Kelly*



Description of monument and accessories I established to perpetuate the original location of this corner.

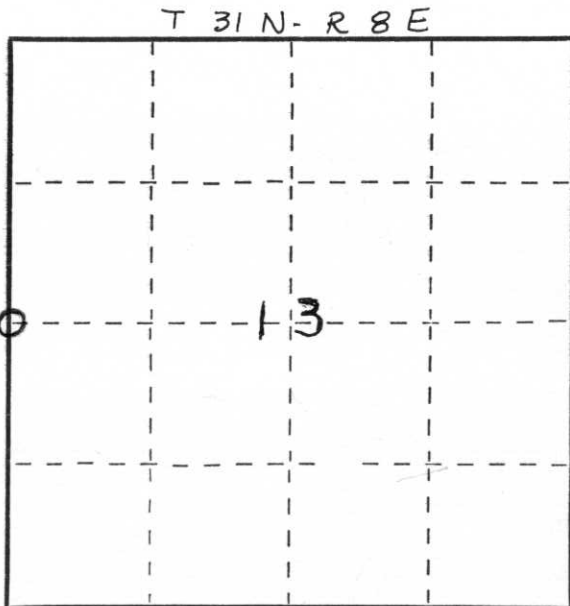
NEW ALUM. W.C. MON. - FLUSH WITH GRDND  
CORNER STONE MON. NOTE: MON. LEANING TO THE NORTH AGAINST CREEK BANK SUPPORTED BY ROCK BED

SET A NEW ALUMINUM MONUMENT AS A WITNESS CORNER - 15 FT. NORTH OF THE CORNER.



MONUMENT MARKED:

NOTE: NEW BEARING TREES SCRIBED NBT AND MARKED WITH A + AT BASE.



Dated at ELCHO, Wis., this 13<sup>TH</sup> day of FEBRUARY, 1975.

Signature William F. Kelly Title REGISTERED LAND SURVEYOR Registration No. 51098  
(County Surveyor, Registered Land Surveyor, or other duly authorized official)

Office of Register of Deeds, County of \_\_\_\_\_, I hereby certify that the within instrument was filed in this office for record on the \_\_\_\_\_ day of \_\_\_\_\_, 19\_\_\_\_ at \_\_\_\_\_ o'clock \_\_\_\_\_ M.

(Register of Deeds)

By \_\_\_\_\_ Deputy

○ = Corner monument restored.