

LINCOLN COUNTY U.S. PUBLIC LAND SURVEY MONUMENT LOCATION RECORD

CORNER NUMBER 143187

SECTION 14

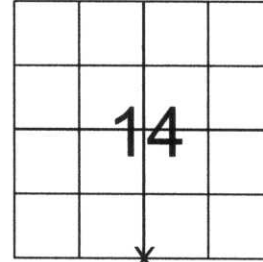
TOWNSHIP 31 NORTH

RANGE 8 EAST

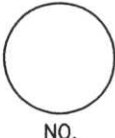
PINE RIVER

CITY, VILLAGE, TOWN

SECTION



LOCATION
(Indicated By X)



LANDMARK BENCHMARK _____ FOUND SET RESET RE-TIED

CORNER IDENTITY: SOUTH 1/4 CORNER

LINCOLN COUNTY COORDINATE: N: 116218.73
E: 452439.97

ELEVATION-(FEET): _____ DATUM: _____

WEATHER: PARTLY CLOUDY

DATE OF SURVEY: 10-25-05 TEMPERATURE: 50 °F

SURVEY PARTY: NATHAN WINCENTSEN, KEITH WALKOWSKI

BASIS FOR MONUMENT LOCATION:
(DESCRIBE METHOD OF SURVEY AND CORNER AUTHENTICATION)

DUG FOR SOUTH 1/4 CORNER WITH COUNTY GRADALL AT CENTERLINE AND FENCE LINE INTERSECTION FOUND GRANITE STONE TIPPED 1 FOOT BELOW ROAD SURFACE, STRAIGHTENED STONE AND ACCEPTED THIS LOCATION SET 1" IRON PIPE ALONG NORTH SIDE OF STONE AND PERPETUATED CORNER AS SHOWN BELOW.



CERTIFIED CORRECT:

Keith J. Walkowski
KEITH J. WALKOWSKI
Registered Land Surveyor
DATE: Jan. 3RD 2006

FIELD BOOK NO. PINE RIVER PAGE NO. 10

COMPANY RIVERSIDE LAND SURVEYING LLC

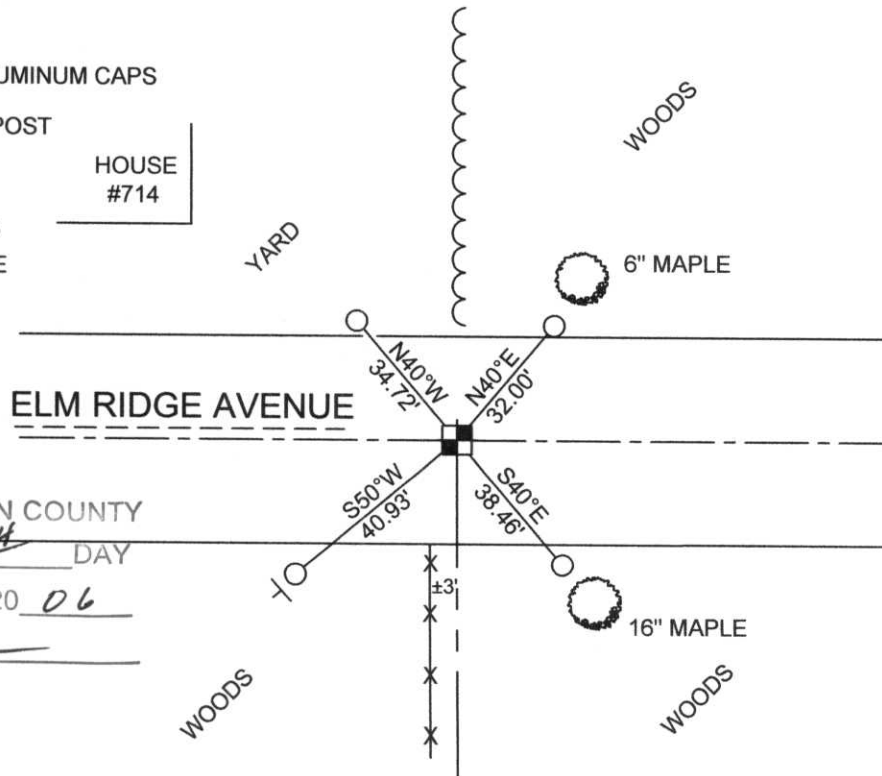
TIE SKETCH: SHOW MINIMUM OF FOUR (4) HORIZONTAL TIE DISTANCES TO FIXED WITNESS MONUMENTS. DESCRIBE ALL MONUMENTS FOUND OR SET. CORRECT ALL DISTANCES SHOWN TO STANDARD TEMPERATURE OF 68° F.

- FOUND GRANITE STONE
- SET 3/4" REBAR WITH ALUMINUM CAPS
- VINYL SURVEY MARKER POST

NOTE

- ALL BEARINGS ARE FROM A HAND HELD MAGNETIC COMPASS
- THIS DRAWING IS NOT TO SCALE

HOUSE #714



RECEIVED BY LINCOLN COUNTY SURVEYOR THIS 6TH DAY OF January 20 06
Tony Walker
COUNTY SURVEYOR

b1-14

