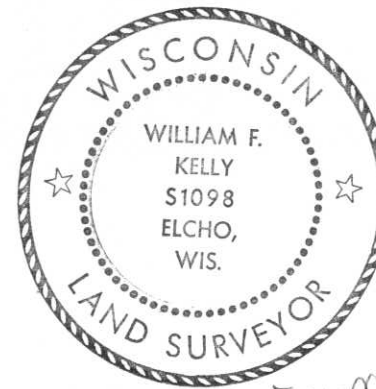


CERTIFIED LAND CORNER RESTORATION

Index No. M-25

State of Wisconsin }
County of LINCOLN } ss.

History of original corner establishment:



William F. Kelly

I WILLIAM F KELLY, do hereby certify that on the 14TH day of FEBRUARY, 1975, I found evidence of the SECTION corner of SECTIONS 13, 18, 24, & 19 Township 31, North, Range 8 & 9 EAST, Fourth, Principal Meridian, as described hereon; and that from this evidence I established a new monument and accessories as described hereon to perpetuate the original location of this corner.

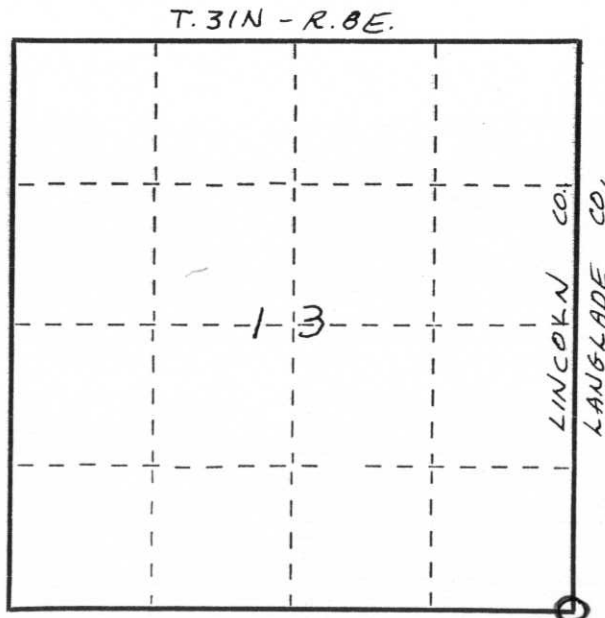
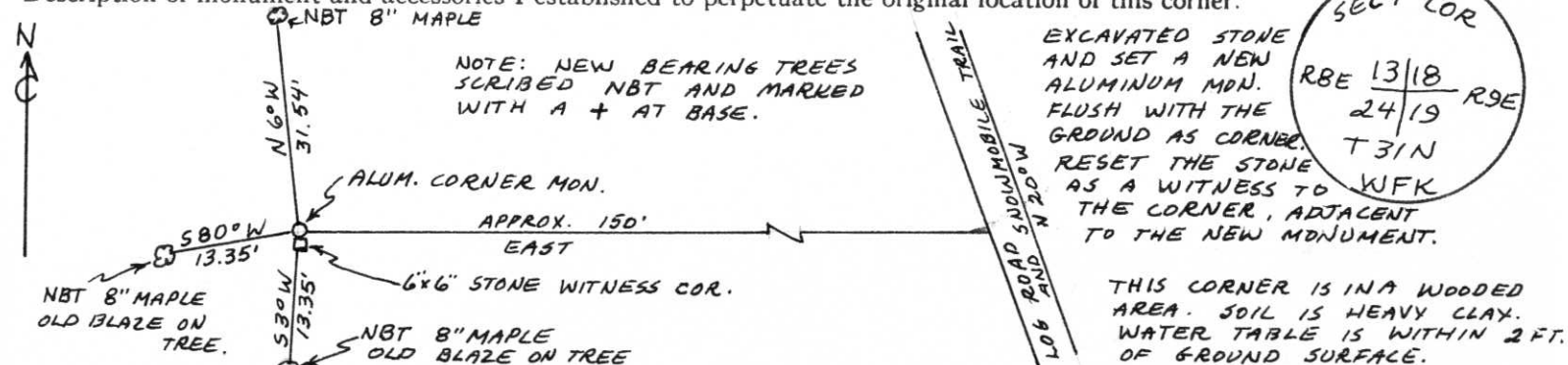
Description of corner evidence found:

LOCATED 6x6 GRANITE STONE LYING ON IT'S SIDE - DUE TO FROST ACTION. STONE WAS SET IN THE 1920S. LINES BLAZED E-W-N-S OF CORNER LOCATION.

Resident witnesses:

FREDRICK OHLMANN

Description of monument and accessories I established to perpetuate the original location of this corner.



Dated at ELCHO, Wis., this 14TH day of FEBRUARY, 1975.

Signature William F. Kelly Title REGISTERED LAND SURVEYOR Registration No. S. 1098
(County Surveyor, Registered Land Surveyor, or other duly authorized official)

Office of Register of Deeds, County of _____, I hereby certify that the within instrument was filed in this office for record on the _____ day of _____, 19____ at _____ o'clock _____ M.

(Register of Deeds)

By _____ Deputy

○ = Corner monument restored.