



CERTIFIED LAND CORNER RESTORATION

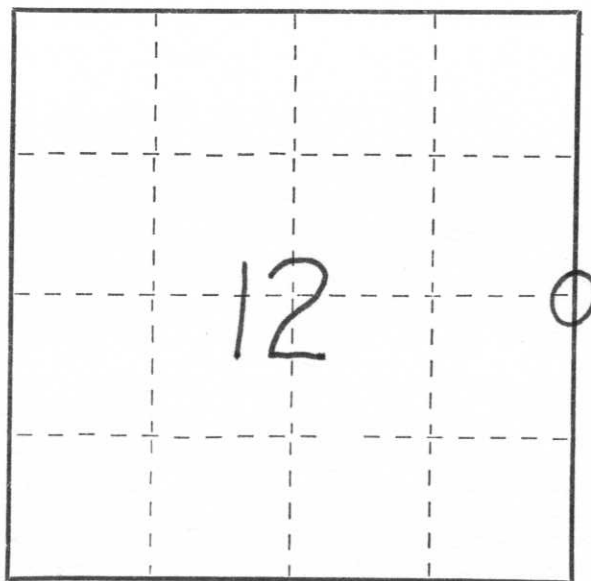
Index No. G-25

State of Wisconsin }  
County of Lincoln } ss.

I Sheridan D. Schwark, do hereby certify that on the 11th day of June, 1979, I found evidence of the east one-quarter corner of Section 12 Township 31, North, Range 8 East, Fourth, Principal Meridian, as described hereon; and that from this evidence I established a new monument and accessories as described hereon to perpetuate the original location of this corner.

Resident witnesses:

.....  
.....  
.....



○ = Corner monument restored.

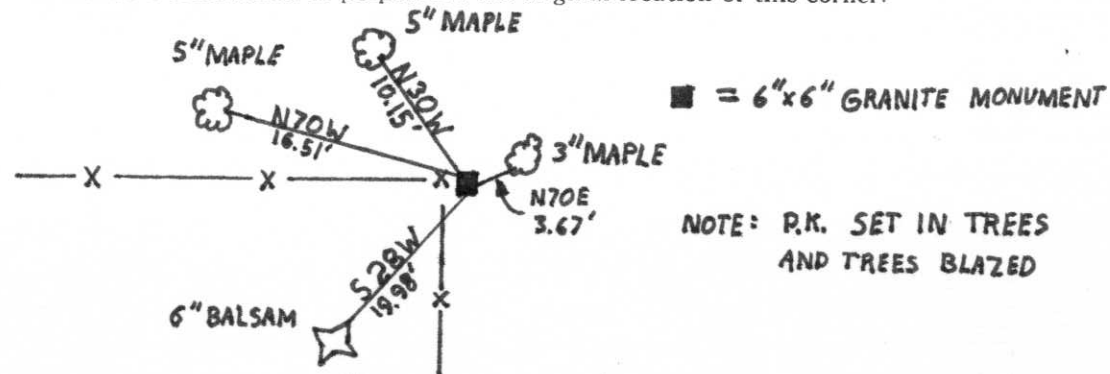
History of original corner establishment:

Date: June 1851  
Surveyor: Marsh  
Monument: Wood Post  
Witnesses: 8" Birch S70E 38 links  
14" Birch S35W 6 links  
12" Hemlock N01W 8 links  
8" Hemlock N28E 26 links

Description of corner evidence found:

We found a 6"x6" red granite monument slightly tipped with its top 15" above grade. We mounded soil around the stone and straightened it.

Description of monument and accessories I established to perpetuate the original location of this corner.



Dated at Wausau, Wis., this 13<sup>th</sup> day of August, 1979.

Signature Sheridan D. Schwark Title Registered Land Surveyor Registration No. S-1205  
(County Surveyor, Registered Land Surveyor, or other duly authorized official)

Office of Register of Deeds, County of \_\_\_\_\_, I hereby certify that the within instrument was filed in this office for record on the \_\_\_\_\_ day of \_\_\_\_\_, 19\_\_\_\_ at \_\_\_\_\_ o'clock \_\_\_\_\_ M.

.....  
(Register of Deeds)

By \_\_\_\_\_ Deputy