

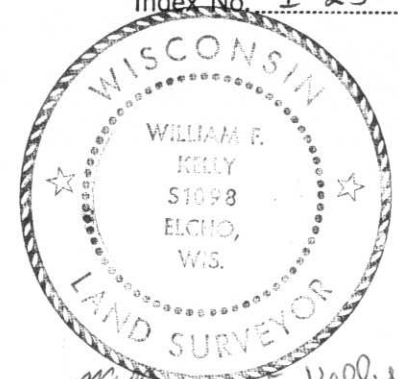
CERTIFIED LAND CORNER RESTORATION

Index No. I-25

State of Wisconsin }
County of LINCOLN } ss.

History of original corner establishment:

GRANITE STONES SET IN THE 1920'S



I WILLIAM F. KELLY, do hereby certify that on the 6TH day of FEBRUARY, 1975, I found evidence of the SECTION corner of SECTIONS 12, 7, 13, 18 Township 31, North, Range 8 & 9 EAST, Fourth, Principal Meridian, as described hereon; and that from this evidence I established a new monument and accessories as described hereon to perpetuate the original location of this corner.

Description of corner evidence found:

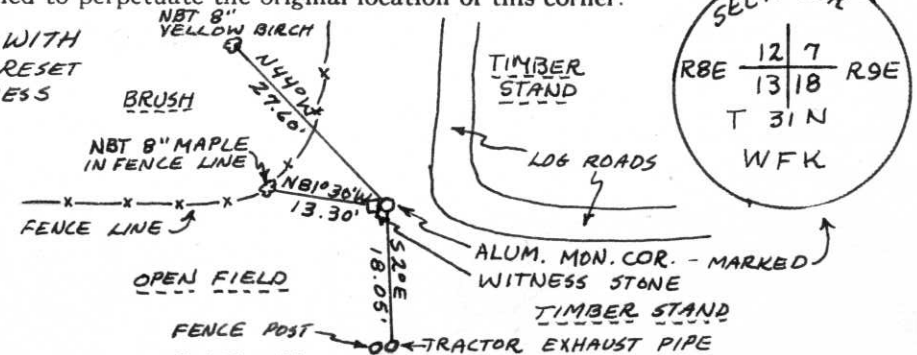
LOCATED 6x6" GRANITE STONE LYING ON ITS SIDE. STONE HAD BEEN KNOCKED OVER BY LOGGING OPERATION. RESIDENT WITNESS IDENTIFIED ORIGINAL LOCATION OF CORNER. ALSO FOUND DEPRESSION IN GROUND INDICATING ORIGINAL CORNER.

Resident witnesses:

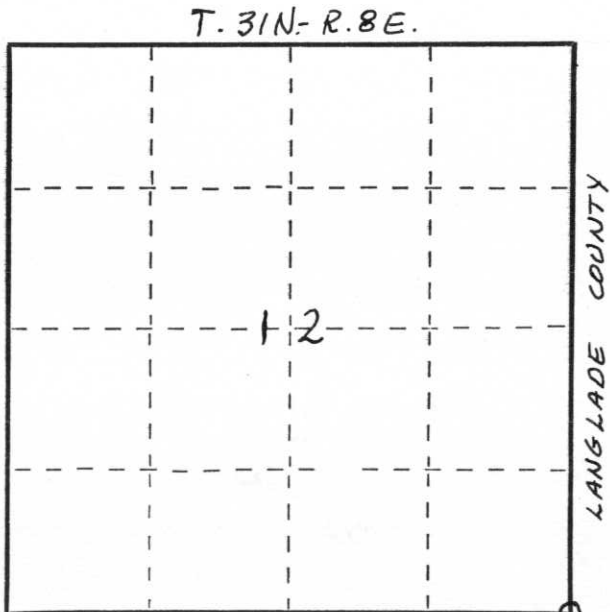
E. DITTMAR

Description of monument and accessories I established to perpetuate the original location of this corner.

SET NEW ALUM. MONUMENT FLUSH WITH GROUND AS CORNER MONUMENT AND RESET STONE NEXT TO MONUMENT AS A WITNESS CORNER.



NOTE: NEW BEARING TREES SCRIBED NBT AND MARKED WITH A + AT BASE.



○ = Corner monument restored. COUNTY

Dated at ELCHO, Wis., this 6TH day of FEBRUARY, 1975

Signature William F. Kelly Title REGISTERED LAND SURVEYOR Registration No. 51098
 (County Surveyor, Registered Land Surveyor, or other duly authorized official)

Office of Register of Deeds, County of _____, I hereby certify that the within instrument was filed in this office for record on the _____ day of _____, 19____ at _____ o'clock _____ M.

(Register of Deeds)

By _____ Deputy