

LINCOLN COUNTY U.S. PUBLIC LAND SURVEY MONUMENT LOCATION RECORD

SECTION 15
TOWNSHIP 31 N
RANGE 8 E

I-15
NO.

LANDMARK BENCHMARK
CORNER IDENTITY: NORTH 1/4 CORNER SECTION 15 (SNM-1 NAIL)
FOUND SET
RE-SET RE-TIED

LINCOLN COUNTY COORDINATE: N: 121461.7950
E: 447167.9770

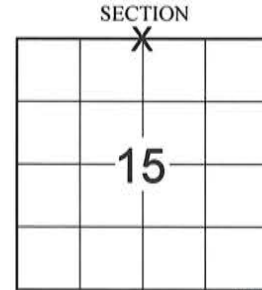
ELEVATION-(FEET): _____ DATUM: _____

WEATHER: CLEAR AND SUNNY

DATE OF SURVEY: 9/12/2014 TEMPERATURE: 65 °F

SURVEY PARTY: KEITH WALKOWSKI AND CHRIS FIERI

PINE RIVER
CITY, VILLAGE, TOWN



BASIS FOR MONUMENT LOCATION:

(DESCRIBE METHOD OF SURVEY AND CORNER AUTHENTICATION)

5/14/1993 - L. Mosher S-1188 found no evidence of the corner and no surveys were found that were tied to this corner. Traversed all of Section 15, locating existing forty fence lines, roadways, and other government corners previously established. Mosher established the corner position at centerline of S.T.H. "64" in line with an old fence line to the North. This location is in harmony with forty fences in the area. Set P.K. Nail at the corner position and set witness monuments to perpetuate it's location.

9/15/2014 - I visited the corner location prior to the resurfacing of Highway "64" and recovered a Survey Marker Nail. Also recovered all four (4) witness monuments from the previous corner restoration form. Distances checked well. Set four (4) Berntsen SSDR-130 for witness monuments and returned after construction to set a Berntsen SNM-1 Nail at the corner location.

LOCATION (Indicated By)



CERTIFIED CORRECT:

Christopher L. Fieri
CHRISTOPHER L. FIERI S-2954
Registered Land Surveyor
DATE: 11-20-2014

FIELD BOOK NO. 41 PAGE NO. 15

COMPANY RIVERSIDE LAND SURVEYING LLC

TIE SKETCH:

- BERNTSEN SNM-1 NAIL SET
- BERNTSEN SSDR-130 MONUMENT SET
- 1-1/4" IRON PIPE FOUND
- VINYL T-POST SET

NW CORNER SECTION 15 T31N, R8E

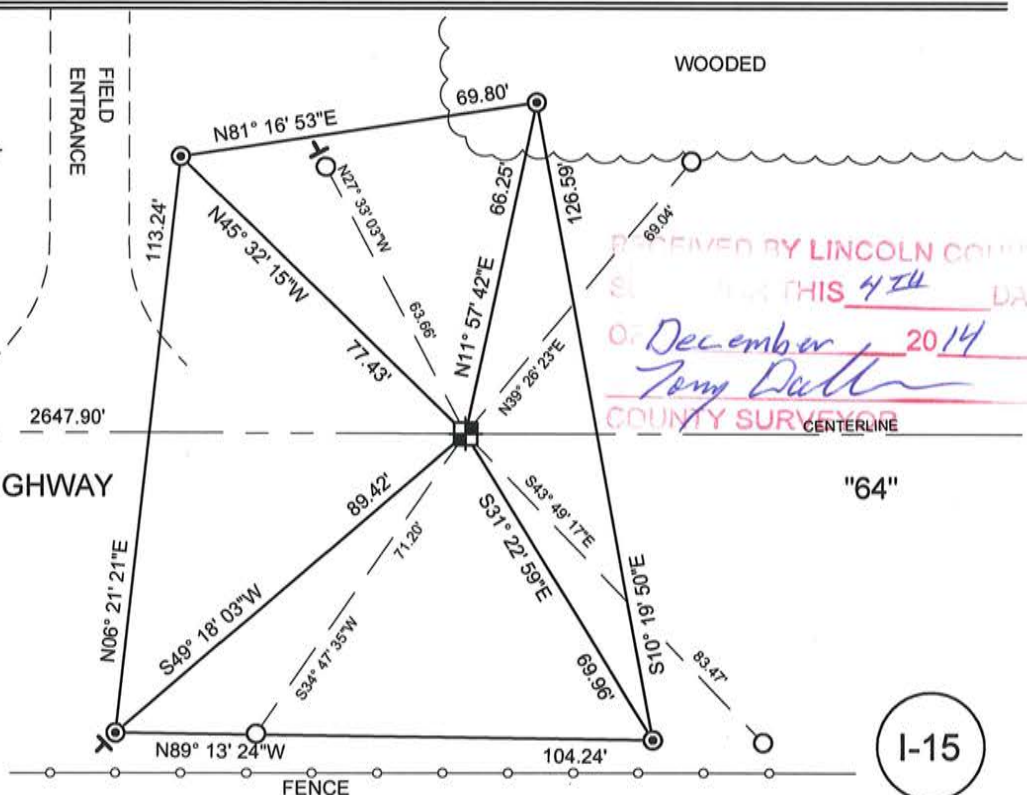
N89° 49' 24"W 2647.90'

STATE

HIGHWAY

"64"

BEARINGS ARE BASED ON THE LINCOLN COUNTY COORDINATE SYSTEM NAD (83) 2011 AND REFERENCED TO THE NORTH LINE OF THE NORTHWEST 1/4 OF SECTION 15 MEASURED TO BEAR NORTH 89°49'24" WEST



RECEIVED BY LINCOLN COUNTY SURVEYOR THIS 4TH DAY OF December 2014
Tony Dettl
COUNTY SURVEYOR

I-15
NO.

U.S. PUBLIC LAND SURVEY MONUMENT RECORD

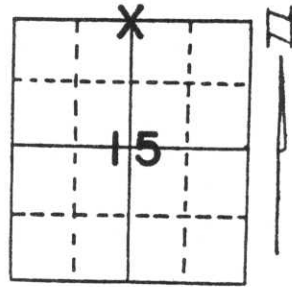
Note: This form is intended and designed to fulfill all requirements of Wisconsin Administrative Code, Chapter A-E 5.02, U.S. Public Land Survey Monument Record (3) (a) (b) (c) (d) (e) (f) (g) (h) (i). An additional sheet may be added if necessary to conform with said requirements.

(a) Corner location: Township 31 North

Range 8 East

Town/City/Village PINE RIVER

County LINCOLN



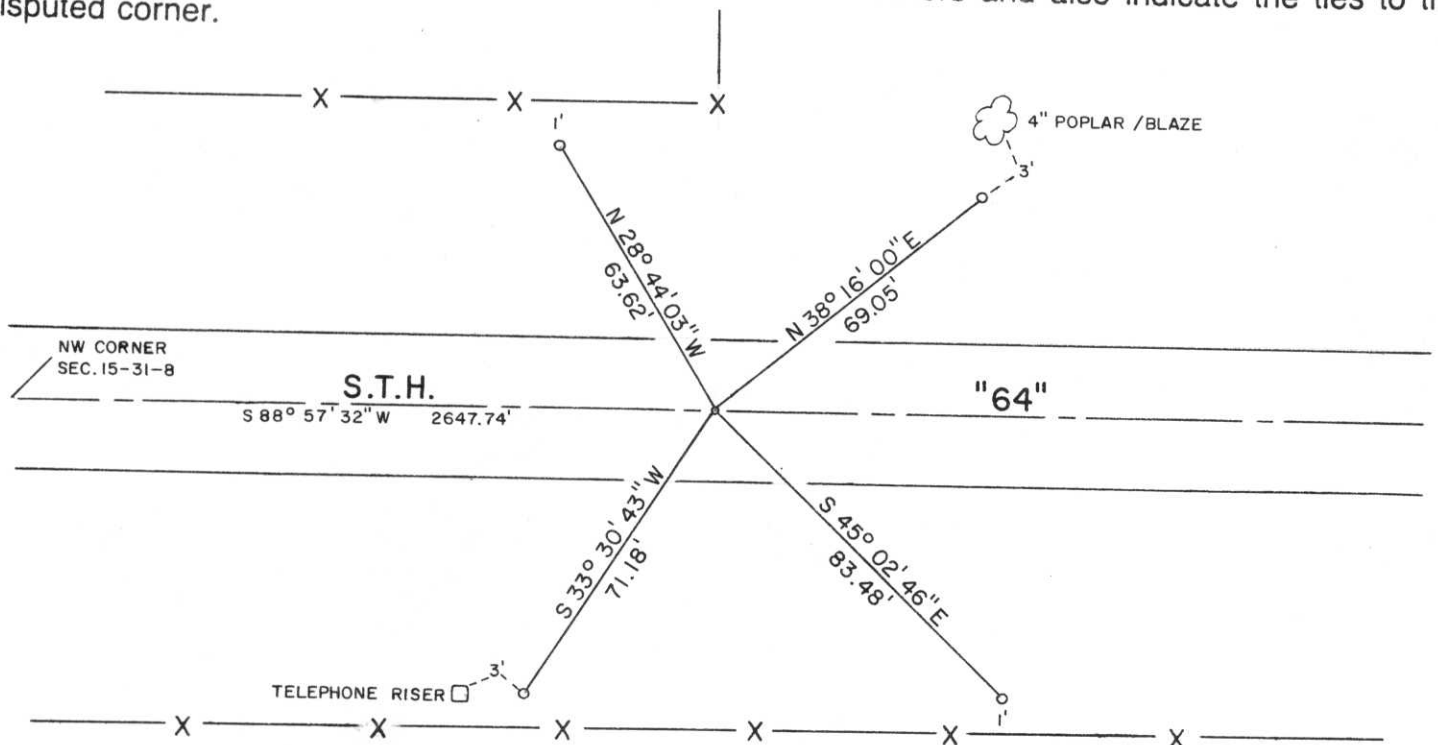
Section 15

(b) (f) (g) (h) Description of monument found at this corner and if it was accepted, state all evidence (material, testimonial, occupational, plats, records, other monuments) used as a basis for accepting. If not accepted or if nothing was found, state evidence used as basis for establishing location. If reestablished through lost corner proportionate methods, indicate all monuments, distances and directions used to establish.

Found no evidence of corner nor recent surveys tied to this corner. Traversed all of Section 15, locating forty fence lines, roadway centerlines and existing corners of record. Established corner point at centerline of S.T.H. "64" in line with old fence line to North. This location is in harmony with forty fences in area. Set PK Nail in blacktop roadway surface at corner point so established.

NOTE: All ties are to 1" x 24" Iron Pipes set flush with ground. Tie bearings are referenced to the North line of the Northwest 1/4, Section 15-31-8 East.

(c) (d) (e) Plan view of corner with ties to at least 4 witness monuments. If in disagreement with previously established corner, show the distances between the two corners and also indicate the ties to the disputed corner.



(i) I, LaVerne H. Mosher

(type or print name) certify that the corner location on this record was determined by me or under my direction and control and that this U.S. Public Land Survey Monument Record is correct and complete to the best of my knowledge and belief.

LaVerne H. Mosher

Signature

MAY 14, 1993

Date



Index No. I-15