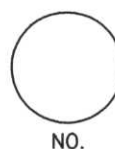


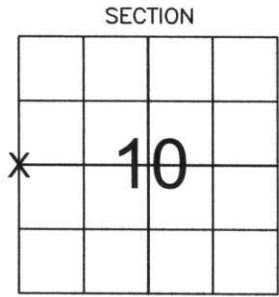
# LINCOLN COUNTY U.S. PUBLIC LAND SURVEY MONUMENT LOCATION RECORD

CORNER NUMBER 103184  
 SECTION 10  
 TOWNSHIP 31 NORTH  
 RANGE 8 EAST  
PINE RIVER  
 CITY, VILLAGE, TOWN



LANDMARK       BENCHMARK \_\_\_\_\_  
 CORNER IDENTITY: WEST 1/4 CORNER  
 LINCOLN COUNTY COORDINATE: N: 124115.56  
 E: 444565.24  
 ELEVATION-(FEET): \_\_\_\_\_ DATUM: \_\_\_\_\_  
 WEATHER: MOSTLY CLOUDY  
 DATE OF SURVEY: 12-10-05 TEMPERATURE: 20 °F  
 SURVEY PARTY: NATHAN WINCENTSEN, KEITH WALKOWSKI

FOUND   
 SET   
 RESET   
 RE-TIED



LOCATION (Indicated By X)



## BASIS FOR MONUMENT LOCATION:

(DESCRIBE METHOD OF SURVEY AND CORNER AUTHENTICATION)

SEARCHED FOR WEST 1/4 CORNER ALONG A NORTH-SOUTH FENCE LINE. FOUND GRANITE STONE ON A STEEP BANK ±4' SOUTH OF THE SOUTH EDGE OF THE PINE RIVER. ACCEPTED STONE AS THE WEST 1/4 CORNER AND PERPETUATED AS SHOWN BELOW.

FIELD BOOK NO. PINE RIVER PAGE NO. 43  
 COMPANY RIVERSIDE LAND SURVEYING LLC

CERTIFIED CORRECT:  
Keith J. Walkowski  
KEITH J. WALKOWSKI  
 Registered Land Surveyor  
 DATE: Jan. 3RD, 2006

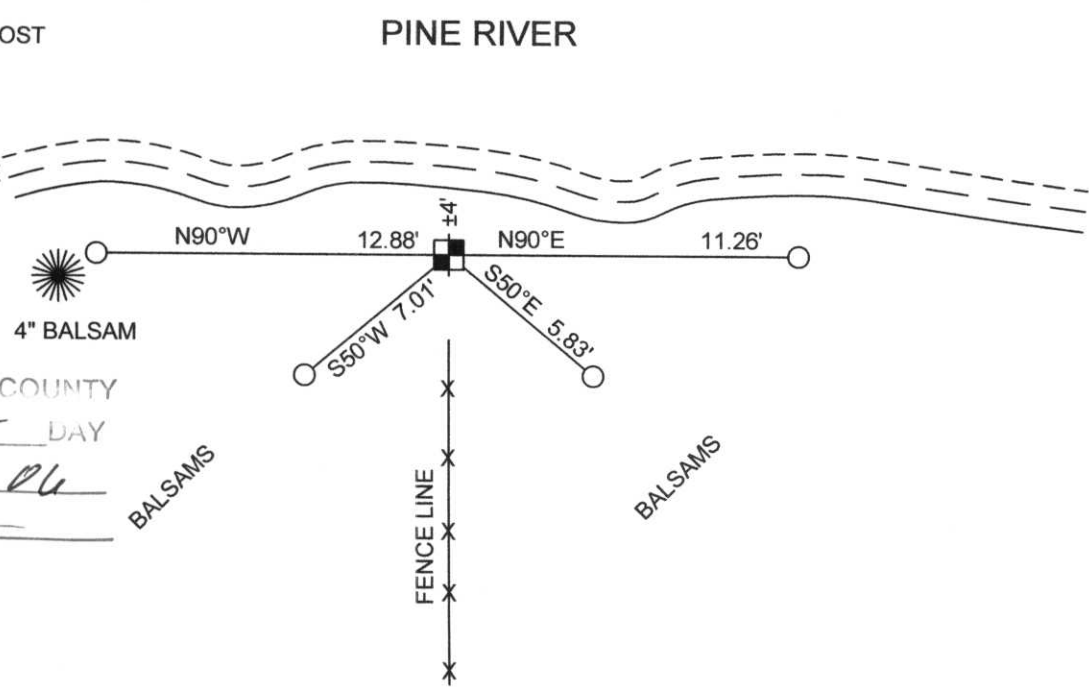
## TIE SKETCH:

SHOW MINIMUM OF FOUR (4) HORIZONTAL TIE DISTANCES TO FIXED WITNESS MONUMENTS. DESCRIBE ALL MONUMENTS FOUND OR SET. CORRECT ALL DISTANCES SHOWN TO STANDARD TEMPERATURE OF 68° F.

- FOUND GRANITE STONE
- SET 3/4" REBAR WITH ALUMINUM CAPS
- VINYL SURVEY MARKER POST

NOTE

- ALL BEARINGS ARE FROM A HAND HELD MAGNETIC COMPASS
- THIS DRAWING IS NOT TO SCALE



RECEIVED BY LINCOLN COUNTY SURVEYOR THIS 6th DAY OF January 20 06  
Zony Gahr  
 COUNTY SURVEYOR

6-13