

LINCOLN COUNTY U.S. PUBLIC LAND SURVEY MONUMENT LOCATION RECORD

SECTION 15
TOWNSHIP 31 N
RANGE 8 E

I-13
NO.

LANDMARK BENCHMARK
CORNER IDENTITY: NORTHWEST CORNER SECTION 15 (SNM-1 NAIL)
FOUND SET
RESET RE-TIED

LINCOLN COUNTY COORDINATE: N: 121469.9590
E: 444520.0910

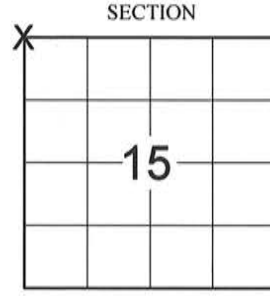
ELEVATION-(FEET): _____ DATUM: _____

WEATHER: CLEAR AND SUNNY

DATE OF SURVEY: 9/12/2014 TEMPERATURE: 65 °F

SURVEY PARTY: KEITH WALKOWSKI AND CHRIS FIERI

PINE RIVER
CITY, VILLAGE, TOWN



LOCATION
(Indicated By X)

BASIS FOR MONUMENT LOCATION:

(DESCRIBE METHOD OF SURVEY AND CORNER AUTHENTICATION)

5/14/1993 - L. Mosher S-1188 found no evidence of the corner and no surveys were found that were tied to this corner. Traversed all of Section 15, locating existing forty fence lines, roadways, and other government corners previously established. Old right-of-way plat of S.T.H. "64" places corner at centerline intersection of "64" and Spile Dam Road. Mosher accepted this point as the best available evidence for the corner as it fits forty line fences in the area very well. Set P.K. Nail at the corner position and set witness monuments to perpetuate it's location.

9/15/2014 - I visited the corner location prior to the resurfacing of Highway "64" and recovered a P.K. Nail. Also recovered three (3) witness monuments from the previous corner restoration form. Distances checked well. Set four (4) Berntsen SDR-130 witness monuments and returned after construction to set a Berntsen SNM-1 Nail at the corner position.



CERTIFIED CORRECT:

Christopher L. Fieri

CHRISTOPHER L. FIERI S-2954
Registered Land Surveyor

DATE: 11-20-2014

FIELD BOOK NO. 41 PAGE NO. 17

COMPANY RIVERSIDE LAND SURVEYING LLC

TIE SKETCH:

- BERNTSEN SNM-1 NAIL SET
- BERNTSEN SDR-130 MONUMENT SET
- 1-1/4" IRON PIPE FOUND
- VINYL T-POST SET

SET BY LINCOLN COUNTY SURVEYOR THIS 4TH DAY OF December 20 14
Tom Dalk
COUNTY SURVEYOR

N1/4 CORNER SECTION 16 T31N, R8E

N1/4 CORNER SECTION 15 T31N, R8E



BEARINGS ARE BASED ON THE LINCOLN COUNTY COORDINATE SYSTEM NAD (83) 2011 AND REFERENCED TO THE NORTH LINE OF THE NORTHWEST 1/4 OF SECTION 15 MEASURED TO BEAR SOUTH 89°49'24" EAST

I-13
NO.

U.S. PUBLIC LAND SURVEY MONUMENT RECORD

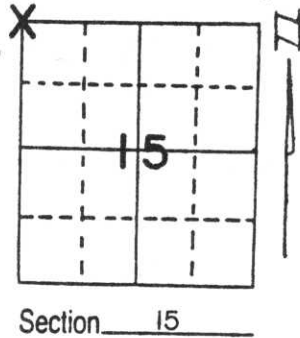
Note: This form is intended and designed to fulfill all requirements of Wisconsin Administrative Code, Chapter A-E 5.02, U.S. Public Land Survey Monument Record (3) (a) (b) (c) (d) (e) (f) (g) (h) (i). An additional sheet may be added if necessary to conform with said requirements.

(a) Corner location: Township 31 North

Range 8 East

Town/City/Village PINE RIVER

County LINCOLN

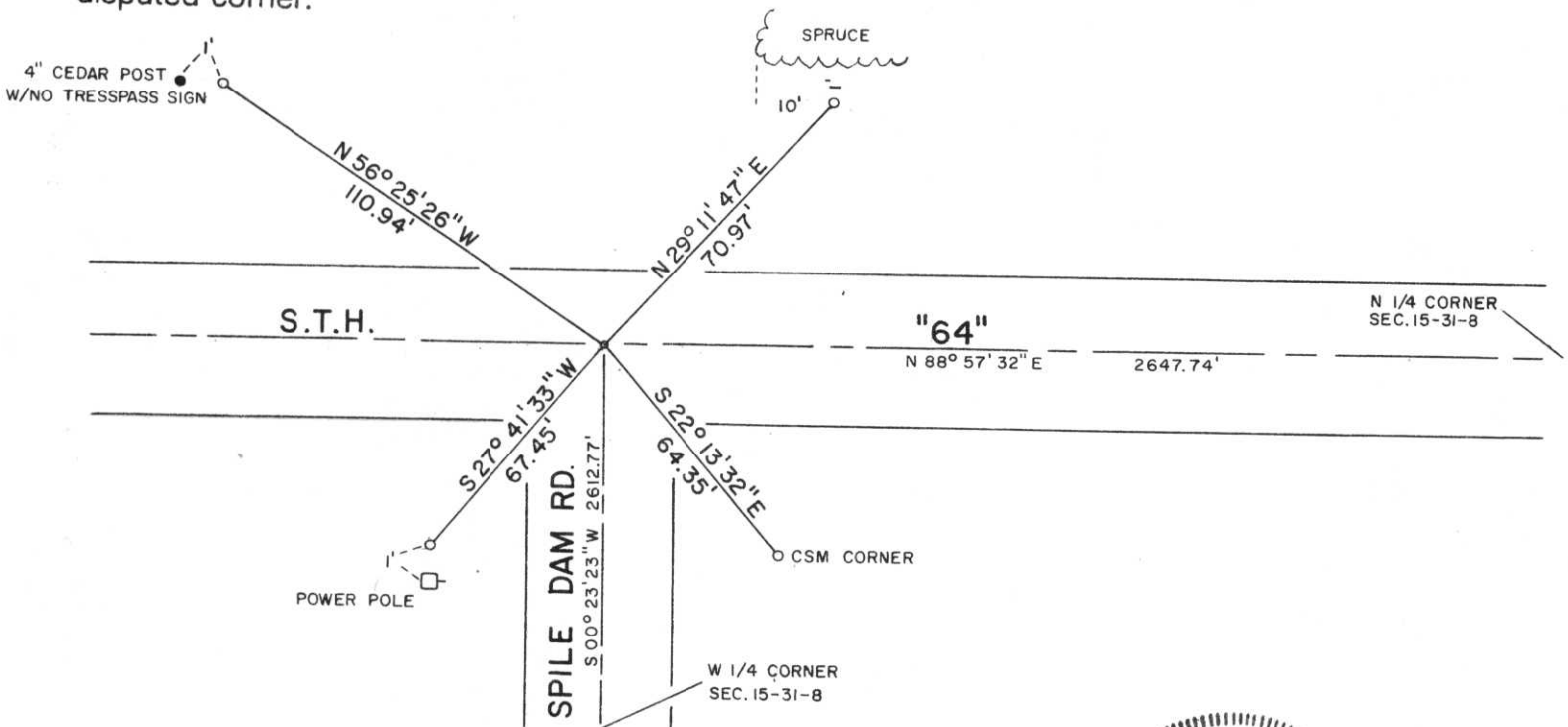


(b) (f) (g) (h) Description of monument found at this corner and if it was accepted, state all evidence (material, testimonial, occupational, plats, records, other monuments) used as a basis for accepting. If not accepted or if nothing was found, state evidence used as basis for establishing location. If reestablished through lost corner proportionate methods, indicate all monuments, distances and directions used to establish.

Found no evidence of corner nor any recent surveys tied to this corner. Traversed all of Section 15, locating existing forty fence lines, roadways and other government corners previously established. Old R/W plat of S.T.H. "64" places corner at centerline intersection of S.T.H. "64" and Spile Dam Road. Accepted this point as best evidence for corner as it fits forty fences in area very well. Set PK Nail at corner point thus established.

NOTE: All ties are to 1" x 24" Iron Pipes set flush with ground surface. Tie bearings shown hereon are referenced to the North line of the Northwest $\frac{1}{4}$ of Section 15-31-8 East.

(c) (d) (e) Plan view of corner with ties to at least 4 witness monuments. If in disagreement with previously established corner, show the distances between the two corners and also indicate the ties to the disputed corner.



(i) I, LaVerne H. Mosher
 (type or print name) certify that the corner location on this record was determined by me or under my direction and control and that this U.S. Public Land Survey Monument Record is correct and complete to the best of my knowledge and belief.

LaVerne H. Mosher
 Signature

MAY 14, 1993
 Date



Index No. I-13